

Datasheet for ABIN2856963
anti-NDUFA10 antibody (Center)

4 Images

[Go to Product page](#)

Overview

Quantity:	100 µL
Target:	NDUFA10
Binding Specificity:	Center
Reactivity:	Human, Mouse
Host:	Rabbit
Clonality:	Polyclonal
Conjugate:	This NDUFA10 antibody is un-conjugated
Application:	Western Blotting (WB), Immunohistochemistry (Paraffin-embedded Sections) (IHC (p)), Immunocytochemistry (ICC), Immunofluorescence (IF)

Product Details

Immunogen:	Recombinant protein encompassing a sequence within the center region of human NDUFA10.
Characteristics:	Rabbit Polyclonal antibody to NDUFA10 (NADH dehydrogenase (ubiquinone) 1 alpha subcomplex, 10, 42 kDa) NDUFA10 antibody
Purification:	Purified by antigen-affinity chromatography.

Target Details

Target:	NDUFA10
Alternative Name:	NDUFA10 (NDUFA10 Products)
Gene ID:	4705

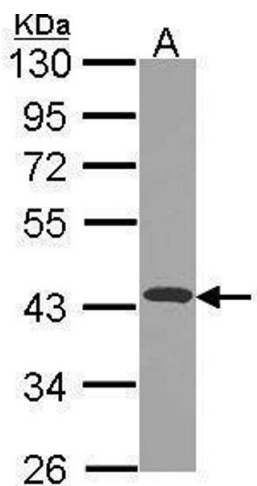
Application Details

Application Notes:	WB: 1:500-1:3000, IHC-P: 1:100-1:1000[suggested antigen retrieval using heat mediated 10 mM Citrate buffer (pH 6.0) or Tris-EDTA buffer (pH 8.0)], ICC/IF: 1:100-1:1000. Not yet tested in other applications. Optimal working dilutions should be determined experimentally by the end user.
Restrictions:	For Research Use only

Handling

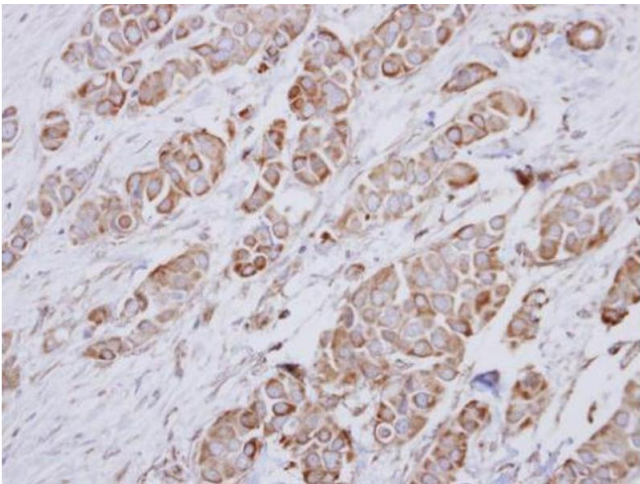
Format:	Liquid
Concentration:	1 mg/mL
Buffer:	0.1M Tris, 0.1M Glycine, 20 % Glycerol (pH 7). 0.01 % Thimerosal was added as a preservative.
Preservative:	Thimerosal (Merthiolate)
Precaution of Use:	This product contains Thimerosal (Merthiolate): a POISONOUS AND HAZARDOUS SUBSTANCE which should be handled by trained staff only.
Storage:	-20 °C
Storage Comment:	Keep as concentrated solution. Aliquot and store at -20°C or below. Avoid multiple freeze-thaw cycles.

Validation report #101746 for Immunofluorescence (IF)



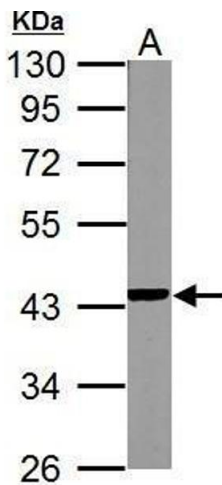
Western Blotting

Image 1. WB Image Sample (30 ug of whole cell lysate) A:
JurKat 10% SDS PAGE antibody diluted at 1:1000



Immunohistochemistry

Image 2. IHC-P Image Immunohistochemical analysis of paraffin-embedded human breast cancer, using NDUFA10, antibody at 1:250 dilution.



Western Blotting

Image 3. WB Image NDUFA10 antibody detects NDUFA10 protein by Western blot analysis. A. 50 µg mouse kidney lysate/extract 10% SDS-PAGE NDUFA10 antibody , dilution: 1:1000

Please check the [product details page](#) for more images. Overall 4 images are available for ABIN2856963.