

Datasheet for ABIN2856970

**anti-SLA antibody**

## 4 Images

[Go to Product page](#)

## Overview

Quantity:	100 µL
Target:	SLA
Reactivity:	Human
Host:	Rabbit
Clonality:	Polyclonal
Conjugate:	This SLA antibody is un-conjugated
Application:	Western Blotting (WB), Immunohistochemistry (Paraffin-embedded Sections) (IHC (p)), Immunofluorescence (IF), Immunocytochemistry (ICC)

## Product Details

Immunogen:	Recombinant protein encompassing a sequence within the center region of human Slap. The exact sequence is proprietary.
Isotype:	IgG
Cross-Reactivity:	Human, Mouse
Characteristics:	Rabbit Polyclonal antibody to Slap (Src-like-adaptor) Slap antibody
Purification:	Purified by antigen-affinity chromatography.

## Target Details

Target:	SLA
Alternative Name:	Src like adaptor ( <a href="#">SLA Products</a> )

## Target Details

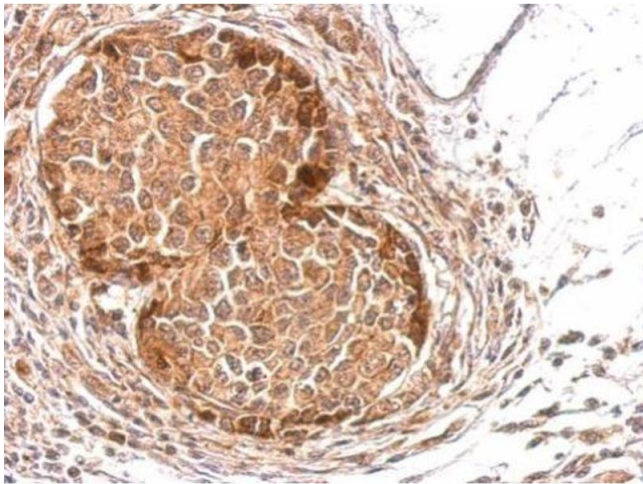
Molecular Weight:	31 kDa
Gene ID:	6503
UniProt:	<a href="#">Q13239</a>

## Application Details

Application Notes:	WB: 1:500-1:3000. ICC/IF: 1:100-1:1000. IHC-P: 1:100-1:1000. Optimal dilutions/concentrations should be determined by the researcher. Not tested in other applications.
Comment:	Positive Control: 293T, A431
Restrictions:	For Research Use only

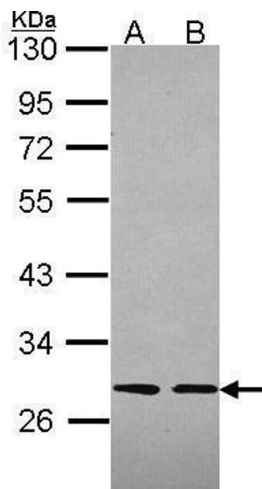
## Handling

Format:	Liquid
Concentration:	0.87 mg/mL
Buffer:	0.1M Tris-Glycine ( pH 7), 20 % Glycerol, 0.01 % Thimerosal
Preservative:	Thimerosal (Merthiolate)
Precaution of Use:	This product contains Thimerosal (Merthiolate): a POISONOUS AND HAZARDOUS SUBSTANCE which should be handled by trained staff only.
Storage:	4 °C,-20 °C
Storage Comment:	Store as concentrated solution. Centrifuge briefly prior to opening vial. For short-term storage (1-2 weeks), store at 4°C. For long-term storage, aliquot and store at -20°C or below. Avoid multiple freeze-thaw cycles.



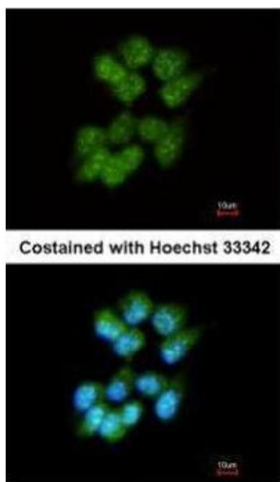
#### Immunohistochemistry

**Image 1.** IHC-P Image Slap antibody detects SLA protein at cytosol on mouse stomach by immunohistochemical analysis. Sample: Paraffin-embedded mouse stomach. Slap antibody , dilution: 1:500.



#### Western Blotting

**Image 2.** WB Image Sample (30 ug of whole cell lysate) A: 293T B: A431 , 12% SDS PAGE antibody diluted at 1:2000



#### Immunofluorescence

**Image 3.** ICC/IF Image Immunofluorescence analysis of methanol-fixed A431, using Slap, antibody at 1:200 dilution.

Please check the [product details page](#) for more images. Overall 4 images are available for ABIN2856970.