



Datasheet for ABIN2856971
anti-SNTA1 antibody



[Go to Product page](#)

2 Images

Overview

Quantity:	100 µL
Target:	SNTA1
Reactivity:	Human
Host:	Rabbit
Clonality:	Polyclonal
Conjugate:	This SNTA1 antibody is un-conjugated
Application:	Western Blotting (WB), Immunofluorescence (IF), Immunocytochemistry (ICC)

Product Details

Immunogen:	Recombinant protein encompassing a sequence within the center region of human Syntrophin alpha 1. The exact sequence is proprietary.
Isotype:	IgG
Cross-Reactivity:	Human
Characteristics:	Rabbit Polyclonal antibody to alpha Syntrophin (syntrophin, alpha 1 (dystrophin-associated protein A1, 59 kDa, acidic component)) alpha Syntrophin antibody [N3C3]
Purification:	Purified by antigen-affinity chromatography.

Target Details

Target:	SNTA1
Alternative Name:	syntrophin alpha 1 (SNTA1 Products)

Target Details

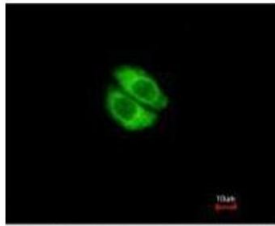
Molecular Weight:	54 kDa
Gene ID:	6640
UniProt:	Q13424
Pathways:	Synaptic Membrane, Skeletal Muscle Fiber Development

Application Details

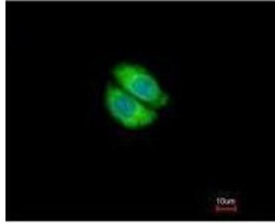
Application Notes:	WB: 1:1000-1:10000. ICC/IF: 1:100-1:1000. Optimal dilutions/concentrations should be determined by the researcher. Not tested in other applications.
Comment:	Positive Control: A549
Restrictions:	For Research Use only

Handling

Format:	Liquid
Concentration:	0.78 mg/mL
Buffer:	0.1M Tris-Glycine (pH 7), 20 % Glycerol, 0.01 % Thimerosal
Preservative:	Thimerosal (Merthiolate)
Precaution of Use:	This product contains Thimerosal (Merthiolate): a POISONOUS AND HAZARDOUS SUBSTANCE which should be handled by trained staff only.
Storage:	4 °C,-20 °C
Storage Comment:	Store as concentrated solution. Centrifuge briefly prior to opening vial. For short-term storage (1-2 weeks), store at 4°C. For long-term storage, aliquot and store at -20°C or below. Avoid multiple freeze-thaw cycles.



Costained with Hoechst 33342



Immunofluorescence

Image 1. ICC/IF Image Immunofluorescence analysis of methanol-fixed A549, using Syntrophin alpha 1, antibody at 1:500 dilution.

Western Blotting

Image 2. WB Image Sample (30 ug of whole cell lysate) A: A549 10% SDS PAGE antibody diluted at 1:5000

