

Datasheet for ABIN2856974  
**anti-VBP1 antibody (Center)**[Go to Product page](#)

## 3 Images

## Overview

Quantity:	100 µL
Target:	VBP1 (PFDN3)
Binding Specificity:	Center
Reactivity:	Human, Mouse
Host:	Rabbit
Clonality:	Polyclonal
Conjugate:	This VBP1 antibody is un-conjugated
Application:	Western Blotting (WB), Immunofluorescence (IF), Immunocytochemistry (ICC)

## Product Details

Immunogen:	Recombinant protein encompassing a sequence within the center region of human VBP1.
Characteristics:	Rabbit Polyclonal antibody to VBP1 (von Hippel-Lindau binding protein 1) VBP1 antibody
Purification:	Purified by antigen-affinity chromatography.

## Target Details

Target:	VBP1 (PFDN3)
Alternative Name:	VBP1 ( <a href="#">PFDN3 Products</a> )
Gene ID:	7411
Pathways:	<a href="#">Unfolded Protein Response</a>

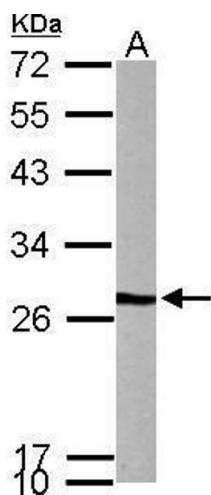
## Application Details

Application Notes:	WB: 1:500-1:3000, ICC/IF: 1:100-1:1000. Not yet tested in other applications. Optimal working dilutions should be determined experimentally by the end user.
Restrictions:	For Research Use only

## Handling

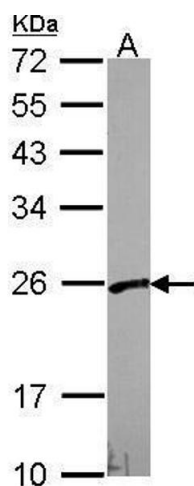
Format:	Liquid
Concentration:	1 mg/mL
Buffer:	0.1M Tris, 0.1M Glycine, 20 % Glycerol ( pH 7). 0.01 % Thimerosal was added as a preservative.
Preservative:	Thimerosal (Merthiolate)
Precaution of Use:	This product contains Thimerosal (Merthiolate): a POISONOUS AND HAZARDOUS SUBSTANCE which should be handled by trained staff only.
Storage:	-20 °C
Storage Comment:	Keep as concentrated solution. Aliquot and store at -20°C or below. Avoid multiple freeze-thaw cycles.

## Images



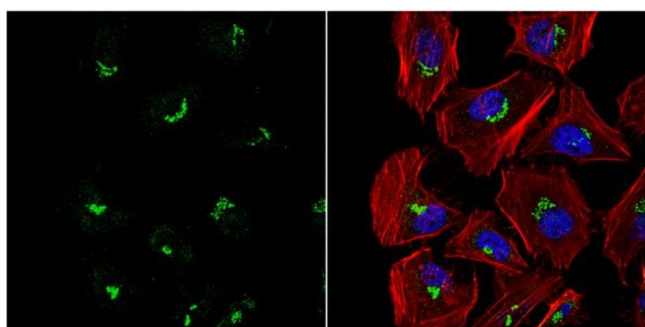
### Western Blotting

**Image 1.** WB Image Sample (50 ug of whole cell lysate) A: mouse brain 12% SDS PAGE antibody diluted at 1:1000



### Western Blotting

**Image 2.** WB Image Sample (30 ug of whole cell lysate) A:  
A549 12% SDS PAGE antibody diluted at 1:1000



### Immunofluorescence

**Image 3.** ICC/IF Image VBP1 antibody detects VBP1 protein at cytoplasm by immunofluorescent analysis. Sample: HeLa cells were fixed in 4% paraformaldehyde at RT for 15 min. Green: VBP1 protein stained by VBP1 antibody , diluted at 1:1000. Red: phalloidin, a cytoskeleton marker, stained by phalloidin (invitrogen, A12380) diluted at 1:200. Blue: Hoechst 33342 staining.