

Datasheet for ABIN2856981

**anti-Ataxin 3 antibody**

3 Images

1 Publication

[Go to Product page](#)

## Overview

Quantity:	100 µL
Target:	Ataxin 3 (ATXN3)
Reactivity:	Human
Host:	Rabbit
Clonality:	Polyclonal
Conjugate:	This Ataxin 3 antibody is un-conjugated
Application:	Western Blotting (WB), Immunohistochemistry (Paraffin-embedded Sections) (IHC (p)), Immunoprecipitation (IP)

## Product Details

Immunogen:	Recombinant protein encompassing a sequence within the center region of human Ataxin 3. The exact sequence is proprietary.
Isotype:	IgG
Cross-Reactivity:	Human, Mouse, Zebrafish (Danio rerio)
Characteristics:	Rabbit Polyclonal antibody to Ataxin 3 (ataxin 3) Ataxin 3 antibody
Purification:	Purified by antigen-affinity chromatography.

## Target Details

Target:	Ataxin 3 (ATXN3)
Alternative Name:	ataxin 3 ( <a href="#">ATXN3 Products</a> )

## Target Details

Molecular Weight:	42 kDa
Gene ID:	4287
UniProt:	<a href="#">P54252</a>

## Application Details

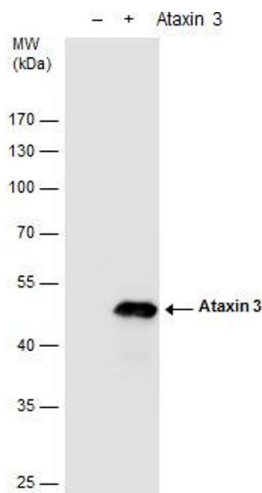
Application Notes:	WB: 1:500-1:3000. IHC-P: 1:100-1:1000. Optimal dilutions/concentrations should be determined by the researcher. Not tested in other applications.
Comment:	Positive Control: mouse brain , human Ataxin3-transfected 293T Validation: Orthogonal, Overexpression
Restrictions:	For Research Use only

## Handling

Format:	Liquid
Concentration:	0.36 mg/mL
Buffer:	1XPBS ( pH 7), 1 % BSA, 20 % Glycerol, 0.025 % ProClin 300
Preservative:	ProClin
Precaution of Use:	This product contains ProClin: a POISONOUS AND HAZARDOUS SUBSTANCE which should be handled by trained staff only.
Storage:	4 °C, -20 °C
Storage Comment:	Store as concentrated solution. Centrifuge briefly prior to opening vial. For short-term storage (1-2 weeks), store at 4°C. For long-term storage, aliquot and store at -20°C or below. Avoid multiple freeze-thaw cycles.

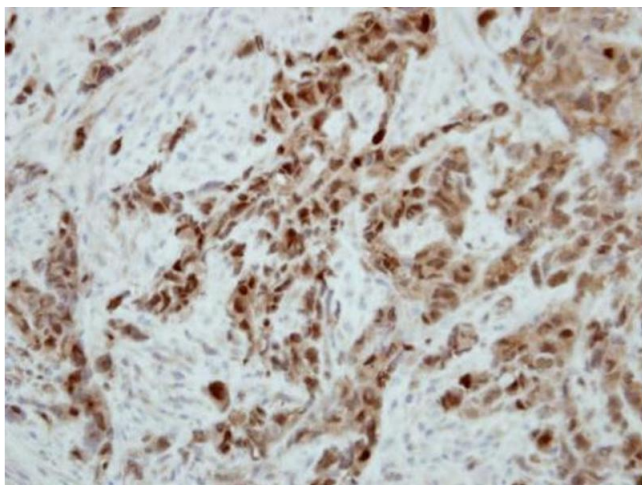
## Publications

Product cited in:	Whiting, Ogier, Forbush, Bucko, Gopalan, Seternes, Langeberg, Scott: "AKAP220 manages apical actin networks that coordinate aquaporin-2 location and renal water reabsorption." in: <b>Proceedings of the National Academy of Sciences of the United States of America</b> , Vol. 113, Issue 30, pp. E4328-37, (2016) ( <a href="#">PubMed</a> ).
-------------------	--



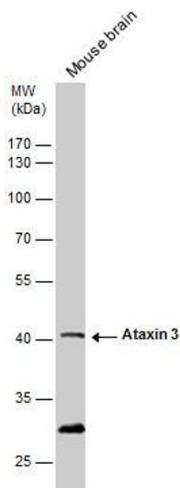
### Western Blotting

**Image 1.** WB Image Ataxin 3 antibody detects Ataxin 3 protein by western blot analysis. 293T mock transfected (-) or transfected with a construct expressing human Ataxin 3 (+). 10 % SDS-PAGE Ataxin 3 antibody , dilution: 1:5000



### Immunohistochemistry

**Image 2.** IHC-P Image Immunohistochemical analysis of paraffin-embedded H661 xenograft, using Ataxin 3, antibody at 1:500 dilution.



### Western Blotting

**Image 3.** WB Image Ataxin 3 antibody detects Ataxin 3 protein by western blot analysis. Mouse tissue extracts (50 µg) was separated by 10 % SDS-PAGE, and blotted with Ataxin 3 antibody , diluted by 1:500