

Datasheet for ABIN2856988
anti-ALDH1A2 antibody



[Go to Product page](#)

4 Images

Overview

Quantity:	100 µL
Target:	ALDH1A2
Reactivity:	Human
Host:	Rabbit
Clonality:	Polyclonal
Conjugate:	This ALDH1A2 antibody is un-conjugated
Application:	Western Blotting (WB), Immunohistochemistry (Paraffin-embedded Sections) (IHC (p)), Immunohistochemistry (Whole Mount) (IHC (wm))

Product Details

Immunogen:	Recombinant protein encompassing a sequence within the center region of human ALDH1A2. The exact sequence is proprietary.
Isotype:	IgG
Cross-Reactivity:	Human, Mouse, Rat, Zebrafish (Danio rerio)
Characteristics:	Rabbit Polyclonal antibody to ALDH1A2 (aldehyde dehydrogenase 1 family, member A2) ALDH1A2 antibody [C1C3]
Purification:	Purified by antigen-affinity chromatography.

Target Details

Target:	ALDH1A2
Alternative Name:	aldehyde dehydrogenase 1 family member A2 (ALDH1A2 Products)

Target Details

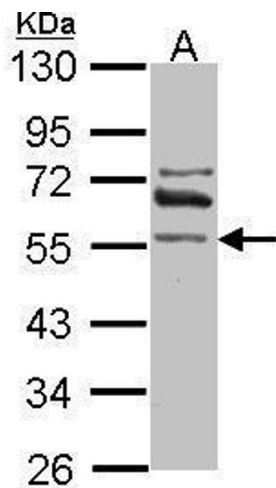
Molecular Weight:	57 kDa
Gene ID:	8854
UniProt:	O94788
Pathways:	Retinoic Acid Receptor Signaling Pathway

Application Details

Application Notes:	WB: 1:500-1:3000. IHC-P: 1:100-1:1000. Optimal dilutions/concentrations should be determined by the researcher. Not tested in other applications.
Comment:	Positive Control: Mouse liver , IMR32 , rat testis , mouse testis
Restrictions:	For Research Use only

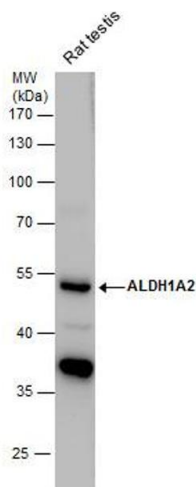
Handling

Format:	Liquid
Concentration:	0.43 mg/mL
Buffer:	1XPBS (pH 7), 1 % BSA, 20 % Glycerol, 0.025 % ProClin 300
Preservative:	ProClin
Precaution of Use:	This product contains ProClin: a POISONOUS AND HAZARDOUS SUBSTANCE which should be handled by trained staff only.
Storage:	4 °C,-20 °C
Storage Comment:	Store as concentrated solution. Centrifuge briefly prior to opening vial. For short-term storage (1-2 weeks), store at 4°C. For long-term storage, aliquot and store at -20°C or below. Avoid multiple freeze-thaw cycles.



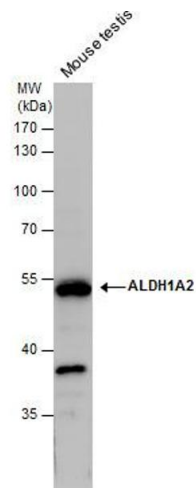
Western Blotting

Image 1. WB Image Sample (30 ug of whole cell lysate) A: IMR32 10% SDS PAGE antibody diluted at 1:1000



Western Blotting

Image 2. WB Image ALDH1A2 antibody detects ALDH1A2 protein by western blot analysis. Rat tissue extracts (50 µg) was separated by 10 % SDS-PAGE, and the membrane was blotted with ALDH1A2 antibody , diluted by 1:1000.



Western Blotting

Image 3. WB Image ALDH1A2 antibody detects ALDH1A2 protein by western blot analysis. Mouse tissue extracts (50 µg) was separated by 10 % SDS-PAGE, and the membrane was blotted with ALDH1A2 antibody , diluted by 1:1000.

Please check the [product details page](#) for more images. Overall 4 images are available for ABIN2856988.