



Datasheet for ABIN2856990

## anti-KYNU antibody



[Go to Product page](#)

### 2 Images

#### Overview

Quantity:	100 µL
Target:	KYNU
Reactivity:	Human
Host:	Rabbit
Clonality:	Polyclonal
Application:	Western Blotting (WB), Immunohistochemistry (Paraffin-embedded Sections) (IHC (p))

#### Product Details

Immunogen:	Recombinant protein encompassing a sequence within the center region of human KYNU. The exact sequence is proprietary.
Isotype:	IgG
Cross-Reactivity:	Human
Characteristics:	Rabbit Polyclonal antibody to KYNU (kynureninase (L-kynurenine hydrolase)) KYNU antibody [N2C2], Internal
Purification:	Purified by antigen-affinity chromatography.

#### Target Details

Target:	KYNU
Alternative Name:	kynureninase ( <a href="#">KYNU Products</a> )
Molecular Weight:	52 kDa

## Target Details

---

Gene ID: 8942

UniProt: [Q16719](#)

## Application Details

---

Application Notes: WB: 1:500-1:3000. IHC-P: 1:100-1:1000. Optimal dilutions/concentrations should be determined by the researcher. Not tested in other applications.

Comment: Positive Control: A549  
Validation: Orthogonal, Overexpression

Restrictions: For Research Use only

## Handling

---

Format: Liquid

Concentration: 0.63 mg/mL

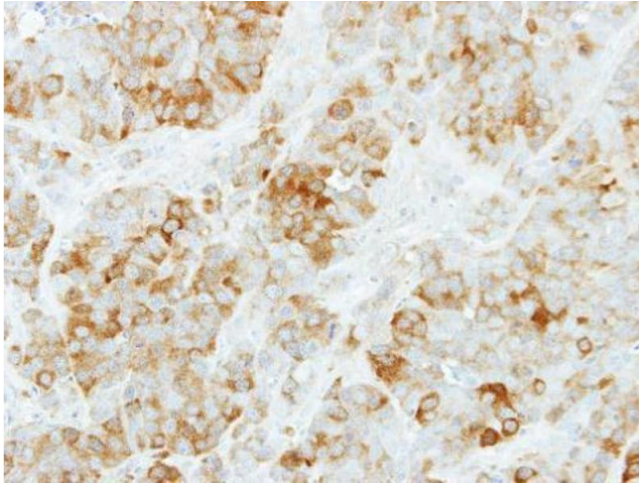
Buffer: 0.1M Tris-Glycine ( pH 7), 20 % Glycerol, 0.01 % Thimerosal

Preservative: Thimerosal (Merthiolate)

Precaution of Use: This product contains Thimerosal (Merthiolate): a POISONOUS AND HAZARDOUS SUBSTANCE which should be handled by trained staff only.

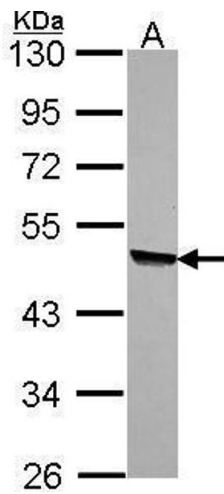
Storage: 4 °C,-20 °C

Storage Comment: Store as concentrated solution. Centrifuge briefly prior to opening vial. For short-term storage (1-2 weeks), store at 4°C. For long-term storage, aliquot and store at -20°C or below. Avoid multiple freeze-thaw cycles.



### Immunohistochemistry

**Image 1.** IHC-P Image Immunohistochemical analysis of paraffin-embedded MCF7 xenograft, using KYNU, antibody at 1:500 dilution.



### Western Blotting

**Image 2.** WB Image Sample (30 ug of whole cell lysate) A: A549 10% SDS PAGE antibody diluted at 1:1000