

Datasheet for ABIN2856993

anti-HOMER3 antibody (Center)

3 Images

1 Publication

[Go to Product page](#)

Overview

Quantity:	100 µL
Target:	HOMER3
Binding Specificity:	Center
Reactivity:	Human
Host:	Rabbit
Clonality:	Polyclonal
Conjugate:	This HOMER3 antibody is un-conjugated
Application:	Western Blotting (WB), Immunohistochemistry (Paraffin-embedded Sections) (IHC (p)), Immunofluorescence (IF), Immunocytochemistry (ICC)

Product Details

Immunogen:	Recombinant protein encompassing a sequence within the center region of human Homer3.
Characteristics:	Rabbit Polyclonal antibody to Homer3 (homer homolog 3 (Drosophila)) Homer3 antibody
Purification:	Purified by antigen-affinity chromatography.

Target Details

Target:	HOMER3
Alternative Name:	Homer3 (HOMER3 Products)
Gene ID:	9454

Application Details

Application Notes: WB: 1:500-1:3000, ICC/IF: 1:100-1:1000, IHC-P: 1:100-1:1000 [suggested antigen retrieval using heat mediated 10 mM Citrate buffer (pH 6.0) or Tris-EDTA buffer (pH 8.0)].
Not yet tested in other applications.
Optimal working dilutions should be determined experimentally by the end user.

Restrictions: For Research Use only

Handling

Format: Liquid

Concentration: 1 mg/mL

Buffer: 0.1M Tris, 0.1M Glycine, 20 % Glycerol (pH 7).
0.01 % Thimerosal was added as a preservative.

Preservative: Thimerosal (Merthiolate)

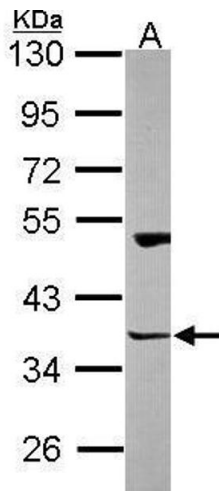
Precaution of Use: This product contains Thimerosal (Merthiolate): a POISONOUS AND HAZARDOUS SUBSTANCE which should be handled by trained staff only.

Storage: -20 °C

Storage Comment: Keep as concentrated solution. Aliquot and store at -20°C or below.
Avoid multiple freeze-thaw cycles.

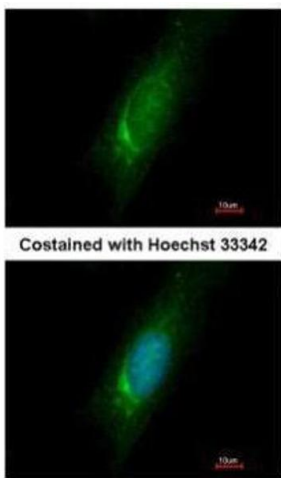
Publications

Product cited in: Xu, Zhou, Xiong, Zou, Deng, Ganaie, Kleiboeker, Peng, Liu, Wang, Ye, Qiu: "Parvovirus B19 NS1 protein induces cell cycle arrest at G2-phase by activating the ATR-CDC25C-CDK1 pathway." in: **PLoS pathogens**, Vol. 13, Issue 3, pp. e1006266, (2017) ([PubMed](#)).



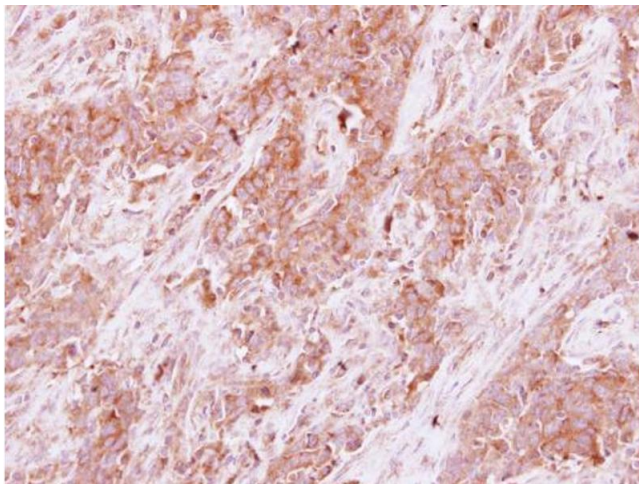
Western Blotting

Image 1. WB Image Sample (30 ug of whole cell lysate) A: NT2D1 10% SDS PAGE antibody diluted at 1:1000



Immunofluorescence

Image 2. ICC/IF Image Immunofluorescence analysis of methanol-fixed HeLa, using Homer3, antibody at 1:500 dilution.



Immunohistochemistry

Image 3. IHC-P Image Homer3 antibody detects Homer3 protein at cytoplasm on human Papillary adenocarcinoma by immunohistochemical analysis. Sample: Paraffin-embedded Papillary adenocarcinoma. Homer3 antibody, dilution: 1:250.