

Datasheet for ABIN2856994

anti-NPEPPS antibody**3** Images[Go to Product page](#)

Overview

Quantity:	100 µL
Target:	NPEPPS
Reactivity:	Human
Host:	Rabbit
Clonality:	Polyclonal
Conjugate:	This NPEPPS antibody is un-conjugated
Application:	Western Blotting (WB), Immunocytochemistry (ICC), Immunofluorescence (IF)

Product Details

Immunogen:	Recombinant protein encompassing a sequence within the center region of human NPEPPS. The exact sequence is proprietary.
Isotype:	IgG
Cross-Reactivity:	Human, Mouse, Rat
Characteristics:	Rabbit Polyclonal antibody to NPEPPS (aminopeptidase puromycin sensitive) NPEPPS antibody [N3C2-2], Internal
Purification:	Purified by antigen-affinity chromatography.

Target Details

Target:	NPEPPS
Alternative Name:	aminopeptidase puromycin sensitive (NPEPPS Products)

Target Details

Molecular Weight: 103 kDa

Gene ID: 9520

UniProt: [P55786](#)

Application Details

Application Notes: WB: 1:500-1:3000. ICC/IF: 1:100-1:1000. Optimal dilutions/concentrations should be determined by the researcher. Not tested in other applications.

Restrictions: For Research Use only

Handling

Format: Liquid

Concentration: 0.68 mg/mL

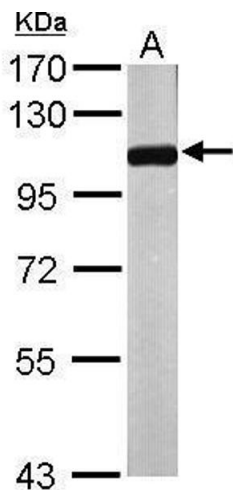
Buffer: 1XPBS (pH 7), 20 % Glycerol, 0.025 % ProClin 300

Preservative: ProClin

Precaution of Use: This product contains ProClin: a POISONOUS AND HAZARDOUS SUBSTANCE which should be handled by trained staff only.

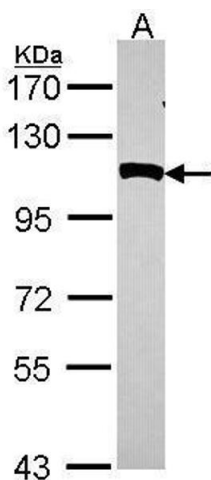
Storage: 4 °C, -20 °C

Storage Comment: Store as concentrated solution. Centrifuge briefly prior to opening vial. For short-term storage (1-2 weeks), store at 4°C. For long-term storage, aliquot and store at -20°C or below. Avoid multiple freeze-thaw cycles.



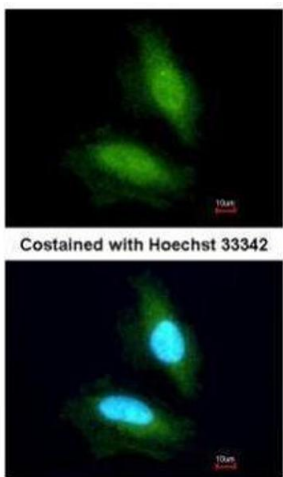
Western Blotting

Image 1. WB Image Sample (50 ug of whole cell lysate) A:
Mouse brain 7.5% SDS PAGE antibody diluted at 1:1000



Western Blotting

Image 2. WB Image Sample (30 ug of whole cell lysate) A:
Hela 7.5% SDS PAGE antibody diluted at 1:1000



Immunofluorescence

Image 3. ICC/IF Image Immunofluorescence analysis of
paraformaldehyde-fixed HeLa, using NPEPPS, antibody at
1:200 dilution.