



Datasheet for ABIN2856997
anti-CLP1 antibody (Center)



[Go to Product page](#)

3 Images

1 Publication

Overview

Quantity:	100 µL
Target:	CLP1
Binding Specificity:	Center
Reactivity:	Human
Host:	Rabbit
Clonality:	Polyclonal
Conjugate:	This CLP1 antibody is un-conjugated
Application:	Western Blotting (WB), Immunohistochemistry (Paraffin-embedded Sections) (IHC (p)), Immunocytochemistry (ICC), Immunofluorescence (IF)

Product Details

Immunogen:	Recombinant protein encompassing a sequence within the center region of human CLP1.
Characteristics:	Rabbit Polyclonal antibody to CLP1 (CLP1, cleavage and polyadenylation factor I subunit, homolog (S. cerevisiae)) CLP1 antibody [N3C3]
Purification:	Purified by antigen-affinity chromatography.

Target Details

Target:	CLP1
Alternative Name:	CLP1 (CLP1 Products)
Gene ID:	10978

Target Details

Pathways: [Ribonucleoprotein Complex Subunit Organization](#)

Application Details

Application Notes: WB: 1:500-1:3000, IHC-P: 1:100-1:1000 [suggested antigen retrieval using heat mediated 10 mM Citrate buffer (pH 6.0) or Tris-EDTA buffer (pH 8.0)], ICC/IF: 1:100-1:1000.
Not yet tested in other applications.
Optimal working dilutions should be determined experimentally by the end user.

Restrictions: For Research Use only

Handling

Format: Liquid

Concentration: 0.27 mg/mL

Buffer: 0.1M Tris, 0.1M Glycine, 20 % Glycerol (pH 7).
0.01 % Thimerosal was added as a preservative.

Preservative: Thimerosal (Merthiolate)

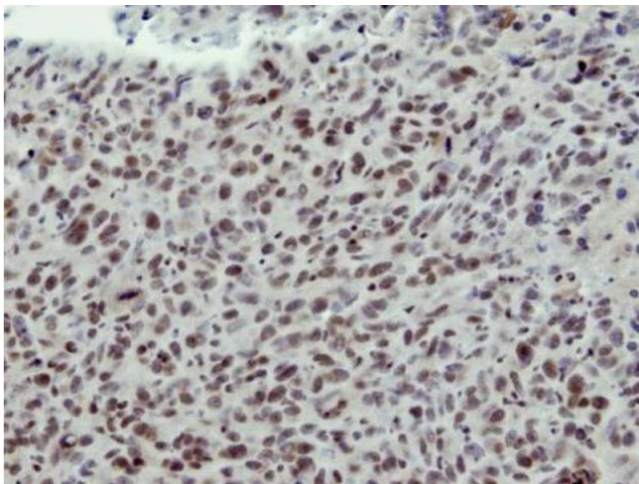
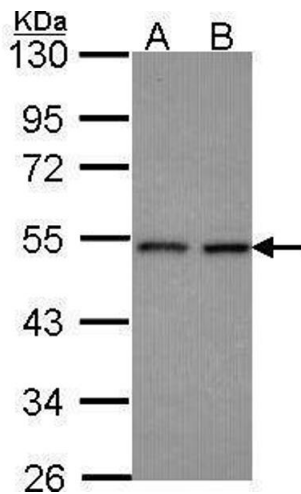
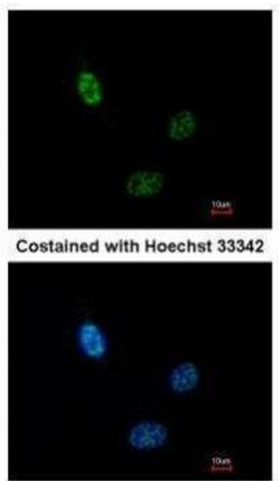
Precaution of Use: This product contains Thimerosal (Merthiolate): a POISONOUS AND HAZARDOUS SUBSTANCE which should be handled by trained staff only.

Storage: -20 °C

Storage Comment: Keep as concentrated solution. Aliquot and store at -20°C or below.
Avoid multiple freeze-thaw cycles.

Publications

Product cited in: Salzman, Nakamura, Nallur, Dookwah, Metheetrairut, Slack, Weidhaas: "miR-34 activity is modulated through 5'-end phosphorylation in response to DNA damage." in: **Nature communications**, Vol. 7, pp. 10954, (2016) ([PubMed](#)).



Immunofluorescence

Image 1. ICC/IF Image Immunofluorescence analysis of paraformaldehyde-fixed HeLa, using CLP1, antibody at 1:200 dilution.

Western Blotting

Image 2. WB Image Sample (30 ug of whole cell lysate) A: HeLa B: Hep G2, 10% SDS PAGE antibody diluted at 1:1000

Immunohistochemistry

Image 3. IHC-P Image Immunohistochemical analysis of paraffin-embedded HS578T xenograft, using CLP1, antibody at 1:100 dilution.