

Datasheet for ABIN2856999
anti-DDX56 antibody (Center)[Go to Product page](#)

4 Images

Overview

Quantity:	100 µL
Target:	DDX56
Binding Specificity:	Center
Reactivity:	Human, Mouse
Host:	Rabbit
Clonality:	Polyclonal
Application:	Western Blotting (WB), Immunohistochemistry (Paraffin-embedded Sections) (IHC (p)), Immunofluorescence (IF), Immunocytochemistry (ICC)

Product Details

Immunogen:	Recombinant protein encompassing a sequence within the center region of human DDX56.
Characteristics:	Rabbit Polyclonal antibody to DDX56 (DEAD (Asp-Glu-Ala-Asp) box polypeptide 56) DDX56 antibody
Purification:	Purified by antigen-affinity chromatography.

Target Details

Target:	DDX56
Alternative Name:	DDX56 (DDX56 Products)
Gene ID:	54606

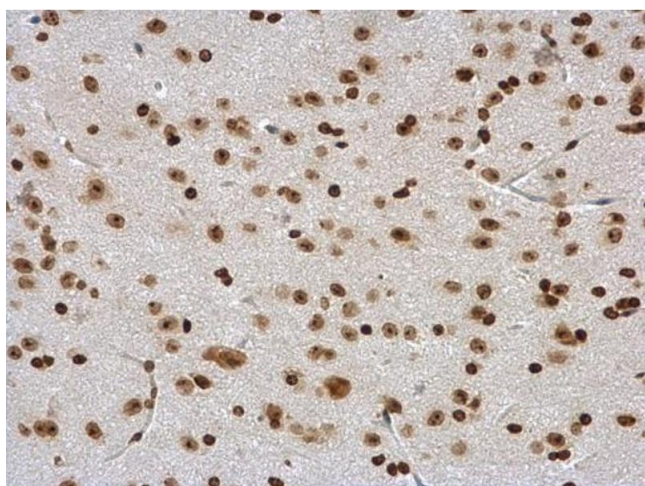
Application Details

Application Notes:	WB: 1:500-1:3000, IHC-P: 1:100-1:1000 [suggested antigen retrieval using heat mediated 10 mM Citrate buffer (pH 6.0) or Tris-EDTA buffer (pH 8.0)], ICC/IF: 1:100-1:1000. Not yet tested in other applications. Optimal working dilutions should be determined experimentally by the end user.
Restrictions:	For Research Use only

Handling

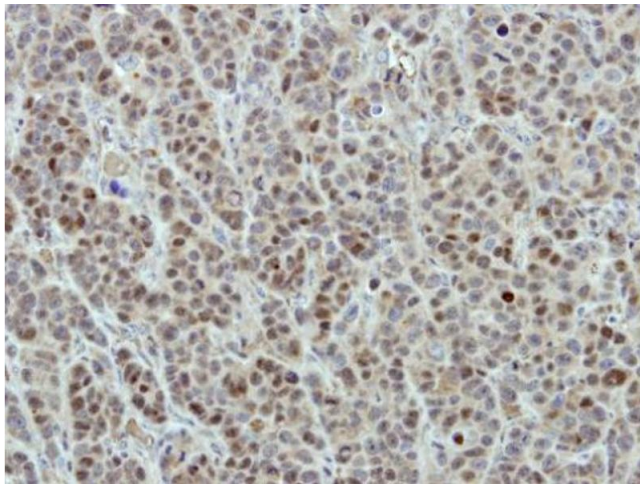
Format:	Liquid
Concentration:	0.96 mg/mL
Buffer:	0.1M Tris, 0.1M Glycine, 20 % Glycerol (pH 7). 0.01 % Thimerosal was added as a preservative.
Preservative:	Thimerosal (Merthiolate)
Precaution of Use:	This product contains Thimerosal (Merthiolate): a POISONOUS AND HAZARDOUS SUBSTANCE which should be handled by trained staff only.
Storage:	-20 °C
Storage Comment:	Keep as concentrated solution. Aliquot and store at -20°C or below. Avoid multiple freeze-thaw cycles.

Images



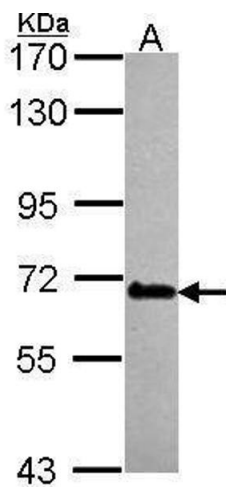
Immunohistochemistry

Image 1. IHC-P Image DDX56 antibody detects DDX56 protein at nucleus in mouse brain by immunohistochemical analysis. Sample: Paraffin-embedded mouse brain. DDX56 antibody , diluted at 1:500.



Immunohistochemistry

Image 2. IHC-P Image Immunohistochemical analysis of paraffin-embedded MCF7 xenograft, using DDX56, antibody at 1:500 dilution.



Western Blotting

Image 3. WB Image Sample (30 ug of whole cell lysate) A: HeLa 7.5% SDS PAGE antibody diluted at 1:1000

Please check the [product details page](#) for more images. Overall 4 images are available for ABIN2856999.