

Datasheet for ABIN2857001
anti-Endothelin 1 antibody (C-Term)

2 Images

[Go to Product page](#)

Overview

Quantity:	100 µL
Target:	Endothelin 1 (EDN1)
Binding Specificity:	C-Term
Reactivity:	Human
Host:	Rabbit
Clonality:	Polyclonal
Conjugate:	This Endothelin 1 antibody is un-conjugated
Application:	Western Blotting (WB), Immunohistochemistry (IHC), Immunocytochemistry (ICC), Immunofluorescence (IF), Immunohistochemistry (Paraffin-embedded Sections) (IHC (p))

Product Details

Immunogen:	Carrier-protein conjugated synthetic peptide encompassing a sequence within the C-terminus region of human Endothelin 1. The exact sequence is proprietary.
Isotype:	IgG
Cross-Reactivity:	Human
Characteristics:	Rabbit Polyclonal antibody to Endothelin 1 (endothelin 1) Endothelin 1 antibody [C1C3]
Purification:	Purified by antigen-affinity chromatography.

Target Details

Target:	Endothelin 1 (EDN1)
---------	---------------------

Target Details

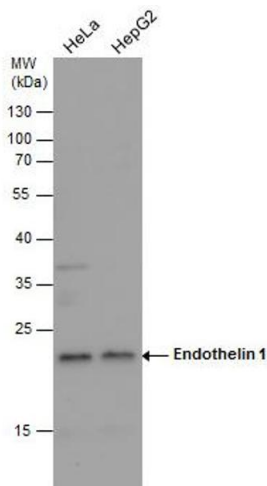
Alternative Name:	endothelin 1 (EDN1 Products)
Molecular Weight:	24 kDa
Gene ID:	1906
UniProt:	P05305
Pathways:	Hormone Transport , Negative Regulation of Hormone Secretion , Regulation of Systemic Arterial Blood Pressure by Hormones , cAMP Metabolic Process , Regulation of Muscle Cell Differentiation , Regulation of G-Protein Coupled Receptor Protein Signaling , Regulation of Cell Size

Application Details

Application Notes:	WB: 1:500-1:10000. ICC/IF: 1:100-1:1000. Optimal dilutions/concentrations should be determined by the researcher. Not tested in other applications.
Comment:	Positive Control: HUVEC , transfected 293T Validation: Overexpression
Restrictions:	For Research Use only

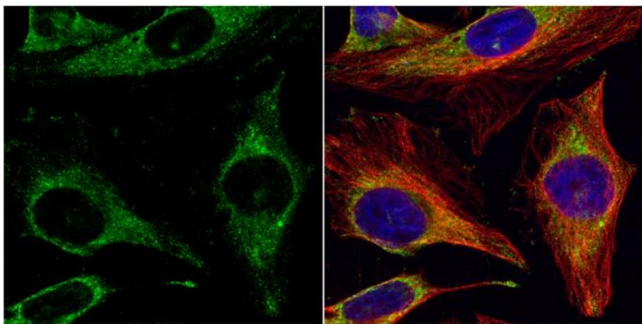
Handling

Format:	Liquid
Concentration:	1.2 mg/mL
Buffer:	1XPBS (pH 7), 20 % Glycerol, 0.025 % ProClin 300
Preservative:	ProClin
Precaution of Use:	This product contains ProClin: a POISONOUS AND HAZARDOUS SUBSTANCE which should be handled by trained staff only.
Storage:	4 °C,-20 °C
Storage Comment:	Store as concentrated solution. Centrifuge briefly prior to opening vial. For short-term storage (1-2 weeks), store at 4°C. For long-term storage, aliquot and store at -20°C or below. Avoid multiple freeze-thaw cycles.



Western Blotting

Image 1. WB Image Endothelin 1 antibody detects Endothelin 1 protein by western blot analysis. Various whole cell extracts (30 µg) were separated by 12% SDS-PAGE, and the membrane was blotted with Endothelin 1 antibody , diluted by 1:1000.



Immunofluorescence

Image 2. ICC/IF Image Endothelin 1 antibody [C1C3] detects Endothelin 1 protein at cytoplasm by immunofluorescent analysis. Sample: HeLa cells were fixed in 4% paraformaldehyde at RT for 15 min. Green: Endothelin 1 protein stained by Endothelin 1 antibody [C1C3] , diluted at 1:500. Red: alpha Tubulin, a cytoskeleton marker, stained by alpha Tubulin antibody [GT114] , diluted at 1:500. Blue: Hoechst 33342 staining.