

Datasheet for ABIN2857008
anti-PNPT1 antibody (N-Term)

3 Images

[Go to Product page](#)

Overview

Quantity:	100 µL
Target:	PNPT1
Binding Specificity:	N-Term
Reactivity:	Human
Host:	Rabbit
Clonality:	Polyclonal
Conjugate:	This PNPT1 antibody is un-conjugated
Application:	Western Blotting (WB), Immunoprecipitation (IP), Immunohistochemistry (Paraffin-embedded Sections) (IHC (p))

Product Details

Immunogen:	Recombinant protein encompassing a sequence within the N-terminus region of human PNase. The exact sequence is proprietary.
Isotype:	IgG
Cross-Reactivity:	Human, Mouse
Characteristics:	Rabbit Polyclonal antibody to PNase (polyribonucleotide nucleotidyltransferase 1) PNase antibody
Purification:	Purified by antigen-affinity chromatography.

Target Details

Target:	PNPT1
---------	-------

Target Details

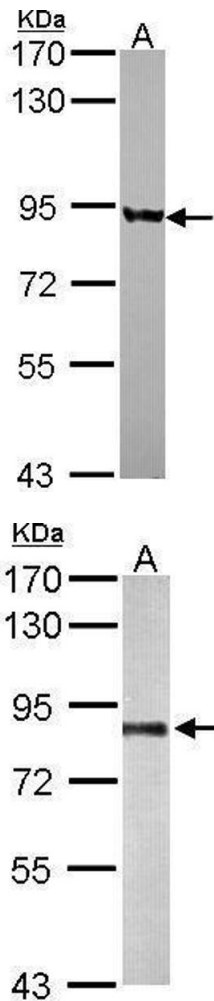
Alternative Name:	polyribonucleotide nucleotidyltransferase 1 (PNPT1 Products)
Molecular Weight:	86 kDa
Gene ID:	87178
UniProt:	Q8TCS8

Application Details

Application Notes:	WB: 1:500-1:3000. IHC-P: 1:100-1:1000. Optimal dilutions/concentrations should be determined by the researcher. Not tested in other applications.
Comment:	Positive Control: Mouse liver , Jurkat
Restrictions:	For Research Use only

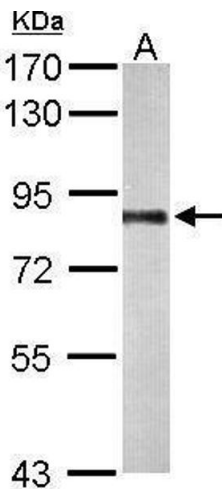
Handling

Format:	Liquid
Concentration:	1 mg/mL
Buffer:	0.1M Tris-Glycine (pH 7), 20 % Glycerol, 0.01 % Thimerosal
Preservative:	Thimerosal (Merthiolate)
Precaution of Use:	This product contains Thimerosal (Merthiolate): a POISONOUS AND HAZARDOUS SUBSTANCE which should be handled by trained staff only.
Storage:	4 °C,-20 °C
Storage Comment:	Store as concentrated solution. Centrifuge briefly prior to opening vial. For short-term storage (1-2 weeks), store at 4°C. For long-term storage, aliquot and store at -20°C or below. Avoid multiple freeze-thaw cycles.



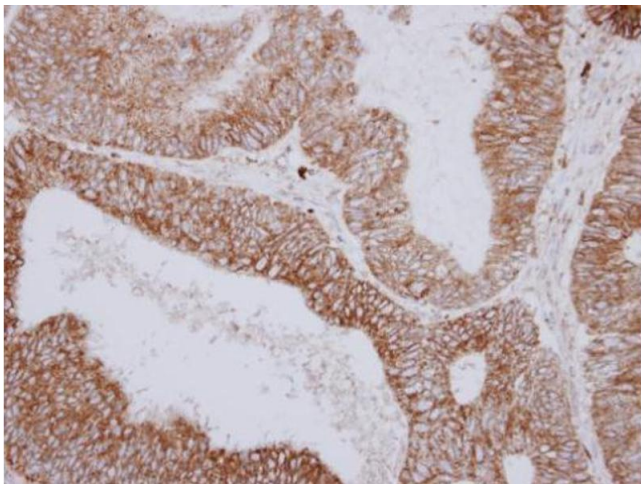
Western Blotting

Image 1. WB Image Sample (30 ug of whole cell lysate) A:
JurKat 7.5% SDS PAGE antibody diluted at 1:1000



Western Blotting

Image 2. WB Image Sample (50 ug of whole cell lysate) A:
Mouse liver 7.5% SDS PAGE antibody diluted at 1:1000



Immunohistochemistry

Image 3. IHC-P Image Immunohistochemical analysis of
paraffin-embedded human colon carcinoma, using PNPase,
antibody at 1:250 dilution.