



[Go to Product page](#)

Datasheet for ABIN2857009

## anti-PNPT1 antibody

### 4 Images

#### Overview

Quantity:	100 µL
Target:	PNPT1
Reactivity:	Human
Host:	Rabbit
Clonality:	Polyclonal
Conjugate:	This PNPT1 antibody is un-conjugated
Application:	Western Blotting (WB), Immunoprecipitation (IP), Immunohistochemistry (Paraffin-embedded Sections) (IHC (p)), Immunofluorescence (IF), Immunocytochemistry (ICC)

#### Product Details

Immunogen:	Recombinant protein encompassing a sequence within the center region of human PNPase. The exact sequence is proprietary.
Isotype:	IgG
Cross-Reactivity:	Human
Characteristics:	Rabbit Polyclonal antibody to PNPase (polyribonucleotide nucleotidyltransferase 1) PNPase antibody
Purification:	Purified by antigen-affinity chromatography.

#### Target Details

Target:	PNPT1
Alternative Name:	polyribonucleotide nucleotidyltransferase 1 ( <a href="#">PNPT1 Products</a> )

## Target Details

---

Molecular Weight: 86 kDa

Gene ID: 87178

UniProt: [Q8TCS8](#)

## Application Details

---

Application Notes: WB: 1:500-1:3000. ICC/IF: 1:100-1:1000. IHC-P: 1:100-1:1000. IP: 1:100-1:500. Optimal dilutions/concentrations should be determined by the researcher. Not tested in other applications.

Comment: Positive Control: 293T , A431 , HeLa , HepG2

Restrictions: For Research Use only

## Handling

---

Format: Liquid

Concentration: 1 mg/mL

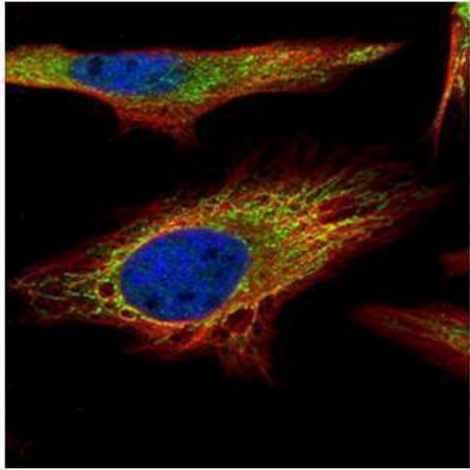
Buffer: 1XPBS ( pH 7), 1 % BSA, 20 % Glycerol, 0.01 % Thimerosal

Preservative: Thimerosal (Merthiolate)

Precaution of Use: This product contains Thimerosal (Merthiolate): a POISONOUS AND HAZARDOUS SUBSTANCE which should be handled by trained staff only.

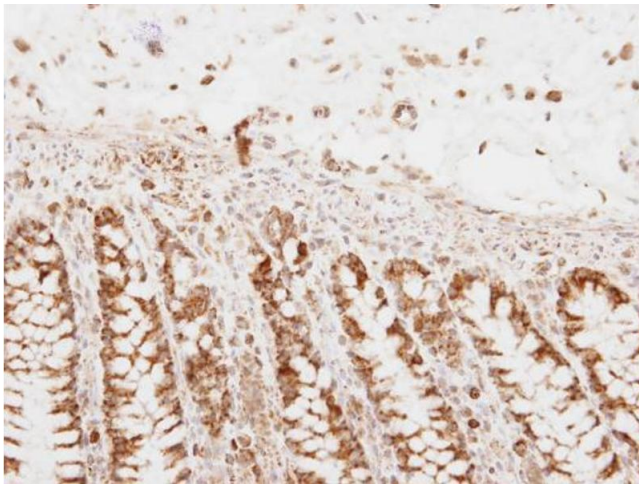
Storage: 4 °C, -20 °C

Storage Comment: Store as concentrated solution. Centrifuge briefly prior to opening vial. For short-term storage (1-2 weeks), store at 4°C. For long-term storage, aliquot and store at -20°C or below. Avoid multiple freeze-thaw cycles.



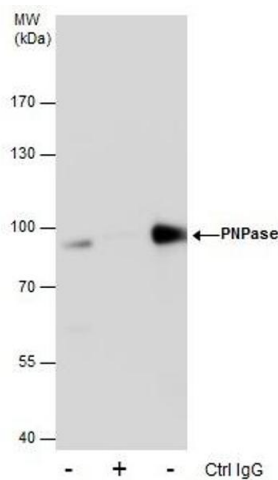
### Immunofluorescence

**Image 1.** ICC/IF Image Confocal immunofluorescence analysis (Olympus FV10i) of paraformaldehyde-fixed HeLa, using PNPase, antibody (Green) at 1:500 dilution. Alpha-tubulin filaments were labeled with (Red) at 1:2500.



### Immunohistochemistry

**Image 2.** IHC-P Image PNPase antibody detects PNPase protein at mitochondria on human normal colon by immunohistochemical analysis. Sample: Paraffin-embedded human normal colon. PNPase antibody, dilution: 1:250.



### Immunoprecipitation

**Image 3.** IP Image Immunoprecipitation of PNPase protein from HeLa whole cell extracts using 5 µg of PNPase antibody, Western blot analysis was performed using PNPase antibody, EasyBlot anti-Rabbit IgG was used as a secondary reagent.

Please check the [product details page](#) for more images. Overall 4 images are available for ABIN2857009.