



Datasheet for ABIN2857010
anti-GPER antibody (C-Term)



[Go to Product page](#)

1 Image

Overview

Quantity:	100 µL
Target:	GPER
Binding Specificity:	C-Term
Reactivity:	Human
Host:	Rabbit
Clonality:	Polyclonal
Application:	Western Blotting (WB), Immunohistochemistry (IHC)

Product Details

Immunogen:	Carrier-protein conjugated synthetic peptide encompassing a sequence within the C-terminus region of human GPR30. The exact sequence is proprietary.
Isotype:	IgG
Cross-Reactivity:	Human, Pig
Characteristics:	Rabbit Polyclonal antibody to GPR30 (G protein-coupled estrogen receptor 1) GPR30 antibody
Purification:	Purified by antigen-affinity chromatography.
Grade:	KO Validated

Target Details

Target:	GPER
---------	------

Target Details

Alternative Name: G protein-coupled estrogen receptor 1 ([GPER Products](#))

Background: This gene is a member of the G-protein coupled receptor 1 family and encodes a multi-pass membrane protein that localizes to the endoplasmic reticulum. The protein binds estrogen, resulting in intracellular calcium mobilization and synthesis of phosphatidylinositol 3,4,5-trisphosphate in the nucleus. This protein therefore plays a role in the rapid nongenomic signaling events widely observed following stimulation of cells and tissues with estrogen. Alternate transcriptional splice variants which encode the same protein have been characterized.

Cellular Localization: Cell membrane, Multi-pass membrane protein , Endoplasmic reticulum membrane, Multi-pass membrane protein (By similarity) , Golgi apparatus membrane, Multi-pass membrane protein (By similarity)

Molecular Weight: 42 kDa

Gene ID: 2852

UniProt: [Q99527](#)

Pathways: [EGFR Signaling Pathway](#), [Positive Regulation of Peptide Hormone Secretion](#), [Intracellular Steroid Hormone Receptor Signaling Pathway](#), [Steroid Hormone Mediated Signaling Pathway](#), [Carbohydrate Homeostasis](#), [cAMP Metabolic Process](#), [Regulation of G-Protein Coupled Receptor Protein Signaling](#), [Positive Regulation of Endopeptidase Activity](#), [Regulation of Carbohydrate Metabolic Process](#)

Application Details

Application Notes: WB: 1:500-1:3000. Optimal dilutions/concentrations should be determined by the researcher.
Not tested in other applications.

Comment: Positive Control: GFP-human GPR30-transfected 293T cells (No boiling)
Validation: KO/KD

Restrictions: For Research Use only

Handling

Format: Liquid

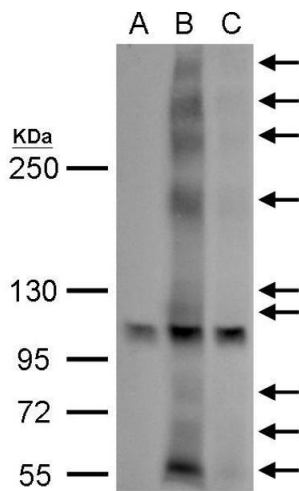
Concentration: 1 mg/mL

Buffer: 1XPBS (pH 7), 20 % Glycerol, 0.01 % Thimerosal

Handling

Preservative:	Thimerosal (Merthiolate)
Precaution of Use:	This product contains Thimerosal (Merthiolate): a POISONOUS AND HAZARDOUS SUBSTANCE which should be handled by trained staff only.
Storage:	4 °C,-20 °C
Storage Comment:	Store as concentrated solution. Centrifuge briefly prior to opening vial. For short-term storage (1-2 weeks), store at 4°C. For long-term storage, aliquot and store at -20°C or below. Avoid multiple freeze-thaw cycles.

Images



Western Blotting

Image 1. WB Image GPR30 antibody detects GPR30 protein by western blot analysis. A. 50 µg 293T whole cell lysate/extract B. 50 µg whole cell lysate/extract of GFP-human GPR30-transfected 293T cells (No boiling) C. 50 µg whole cell lysate/extract of GFP-human GPR30 and GPR30 siRNA-transfected 293T cells (No boiling) 5 % SDS-PAGE GPR30 antibody , dilution: 1:1000