



[Go to Product page](#)

Datasheet for ABIN2857013
anti-LHCGR antibody (C-Term)

8 Images

2 Publications

Overview

Quantity:	100 µL
Target:	LHCGR
Binding Specificity:	C-Term
Reactivity:	Human
Host:	Rabbit
Clonality:	Polyclonal
Conjugate:	This LHCGR antibody is un-conjugated
Application:	Western Blotting (WB), Immunohistochemistry (Paraffin-embedded Sections) (IHC (p))

Product Details

Immunogen:	Carrier-protein conjugated synthetic peptide encompassing a sequence within the C-terminus region of human LHR. The exact sequence is proprietary.
Isotype:	IgG
Cross-Reactivity:	Human, Mouse
Characteristics:	Rabbit Polyclonal antibody to LHR (luteinizing hormone/choriogonadotropin receptor) LHR antibody [C3], C-term
Purification:	Purified by antigen-affinity chromatography.

Target Details

Target:	LHCGR
---------	-------

Target Details

Alternative Name:	luteinizing hormone/choriogonadotropin receptor (LHCGR Products)
Background:	<p>This gene encodes the receptor for both luteinizing hormone and choriogonadotropin. This receptor belongs to the G-protein coupled receptor 1 family, and its activity is mediated by G proteins which activate adenylate cyclase. Mutations in this gene result in disorders of male secondary sexual character development, including familial male precocious puberty, also known as testotoxicosis, hypogonadotropic hypogonadism, Leydig cell adenoma with precocious puberty, and male pseudohermaphroditism with Leydig cell hypoplasia.</p> <p>Cellular Localization: Cell membrane, Multi-pass membrane protein</p>
Molecular Weight:	79 kDa
Gene ID:	3973
UniProt:	P22888
Pathways:	Regulation of Hormone Metabolic Process , Regulation of Hormone Biosynthetic Process , cAMP Metabolic Process , Glycosaminoglycan Metabolic Process , Regulation of Carbohydrate Metabolic Process , Autophagy , Negative Regulation of intrinsic apoptotic Signaling

Application Details

Application Notes:	WB: 1:500-1:3000. IHC-P: 1:100-1:1000. Optimal dilutions/concentrations should be determined by the researcher. Not tested in other applications.
Comment:	Positive Control: H1299
Restrictions:	For Research Use only

Handling

Format:	Liquid
Concentration:	1 mg/mL
Buffer:	1XPBS (pH 7), 20 % Glycerol, 0.01 % Thimerosal
Preservative:	Thimerosal (Merthiolate)
Precaution of Use:	This product contains Thimerosal (Merthiolate): a POISONOUS AND HAZARDOUS SUBSTANCE which should be handled by trained staff only.
Storage:	4 °C, -20 °C

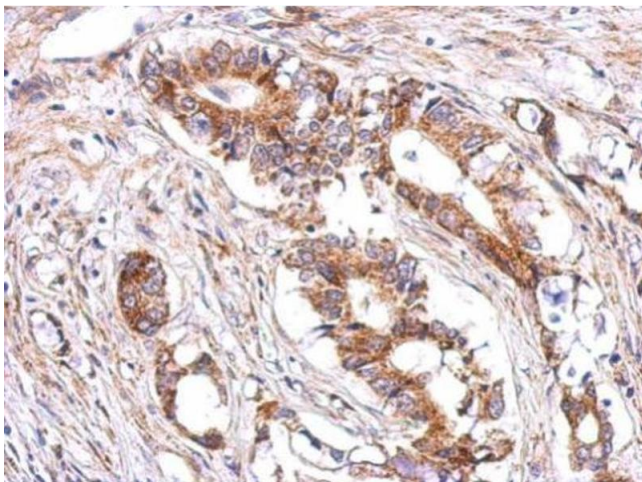
Handling

Storage Comment: Store as concentrated solution. Centrifuge briefly prior to opening vial. For short-term storage (1-2 weeks), store at 4°C. For long-term storage, aliquot and store at -20°C or below. Avoid multiple freeze-thaw cycles.

Publications

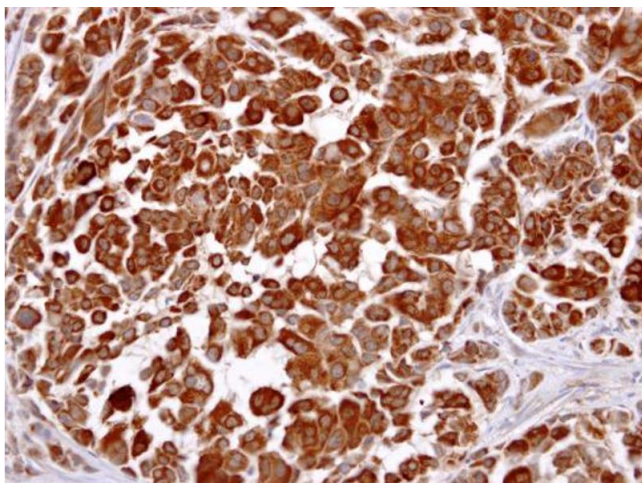
Product cited in: Xu, Zhou, Xiong, Zou, Deng, Ganaie, Kleiboeker, Peng, Liu, Wang, Ye, Qiu: "Parvovirus B19 NS1 protein induces cell cycle arrest at G2-phase by activating the ATR-CDC25C-CDK1 pathway." in: **PLoS pathogens**, Vol. 13, Issue 3, pp. e1006266, (2017) ([PubMed](#)).

Validation report #101746 for Immunofluorescence (IF)



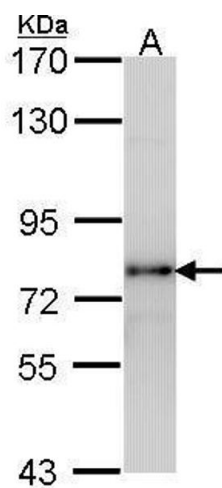
Immunohistochemistry

Image 1. IHC-P Image Immunohistochemical analysis of paraffin-embedded human gastric cancer, using LHR, antibody at 1:500 dilution.



Immunohistochemistry

Image 2. IHC-P Image LHR antibody [C3], C-term detects LHR protein at cytosol on human lung carcinoma by immunohistochemical analysis. Sample: LHR antibody [C3], C-term , dilution: 1:250.



Western Blotting

Image 3. WB Image Sample (30 ug of whole cell lysate) A:
H1299 7.5% SDS PAGE LHR antibody antibody diluted at
1:1000

Please check the [product details page](#) for more images. Overall 8 images are available for ABIN2857013.