

Datasheet for ABIN2857015

anti-GRPR antibody**2** Images[Go to Product page](#)

Overview

Quantity:	100 µL
Target:	GRPR
Reactivity:	Human
Host:	Rabbit
Clonality:	Polyclonal
Conjugate:	This GRPR antibody is un-conjugated
Application:	Western Blotting (WB)

Product Details

Immunogen:	Carrier-protein conjugated synthetic peptide encompassing a sequence within the center region of human GRPR. The exact sequence is proprietary.
Isotype:	IgG
Cross-Reactivity:	Human, Mouse, Rat
Characteristics:	Rabbit polyclonal antibody to GRPR (gastrin-releasing peptide receptor) GRPR antibody [C1C2], Internal
Purification:	Purified by antigen-affinity chromatography.

Target Details

Target:	GRPR
Alternative Name:	gastrin releasing peptide receptor (GRPR Products)

Target Details

Background: Gastrin-releasing peptide (GRP) regulates numerous functions of the gastrointestinal and central nervous systems, including release of gastrointestinal hormones, smooth muscle cell contraction, and epithelial cell proliferation and is a potent mitogen for neoplastic tissues. The effects of GRP are mediated through the gastrin-releasing peptide receptor. This receptor is a glycosylated, 7-transmembrane G-protein coupled receptor that activates the phospholipase C signaling pathway. The receptor is aberrantly expressed in numerous cancers such as those of the lung, colon, and prostate. An individual with autism and multiple exostoses was found to have a balanced translocation between chromosome 8 and a chromosome X breakpoint located within the gastrin-releasing peptide receptor gene.

Cellular Localization: Cell membrane, Multi-pass membrane protein

Molecular Weight: 43 kDa

Gene ID: 2925

UniProt: [P30550](#)

Application Details

Application Notes: WB: 1:500-1:3000. Optimal dilutions/concentrations should be determined by the researcher. Not tested in other applications.

Comment: Positive Control: HeLaS3 , Molt-4 , mouse pancreas , mouse brain , rat brain , rat pancreas

Restrictions: For Research Use only

Handling

Format: Liquid

Concentration: 1 mg/mL

Buffer: 1XPBS (pH 7), 20 % Glycerol, 0.01 % Thimerosal

Preservative: Thimerosal (Merthiolate)

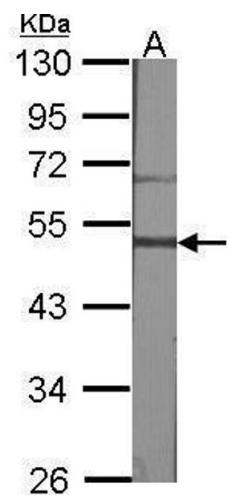
Precaution of Use: This product contains Thimerosal (Merthiolate): a POISONOUS AND HAZARDOUS SUBSTANCE which should be handled by trained staff only.

Storage: 4 °C,-20 °C

Storage Comment: Store as concentrated solution. Centrifuge briefly prior to opening vial. For short-term storage (1-2 weeks), store at 4°C. For long-term storage, aliquot and store at -20°C or below. Avoid

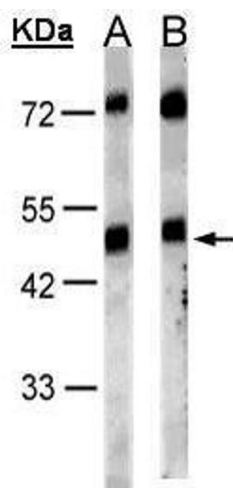
multiple freeze-thaw cycles.

Validation report #101746 for Immunofluorescence (IF)



Western Blotting

Image 1. WB Image Sample (30 ug of whole cell lysate)
A:NIH-3T3 10% SDS PAGE antibody diluted at 1:1000



Western Blotting

Image 2. WB Image Sample(30 µg of whole cell lysate)
A:HeLa S3, B:MOLT4, 10% SDS PAGE antibody diluted at 1:1000