

Datasheet for ABIN2857016
anti-Leukotriene B4 Receptor/BLT antibody[Go to Product page](#)

2 Images

Overview

Quantity:	100 µL
Target:	Leukotriene B4 Receptor/BLT (LTB4R)
Reactivity:	Human
Host:	Rabbit
Clonality:	Polyclonal
Conjugate:	This Leukotriene B4 Receptor/BLT antibody is un-conjugated
Application:	Western Blotting (WB), Immunohistochemistry (Paraffin-embedded Sections) (IHC (p))

Product Details

Immunogen:	Carrier-protein conjugated synthetic peptide encompassing a sequence within the center region of human Leukotriene B4 Receptor. The exact sequence is proprietary.
Isotype:	IgG
Cross-Reactivity:	Human
Characteristics:	Rabbit Polyclonal antibody to P2Y7 (leukotriene B4 receptor) P2Y7 antibody [N3C2], Internal
Purification:	Affinity purified by Protein A.

Target Details

Target:	Leukotriene B4 Receptor/BLT (LTB4R)
Alternative Name:	leukotriene B4 receptor (LTB4R Products)

Target Details

Background: Receptor for extracellular ATP > UTP and ADP. The activity of this receptor is mediated by G proteins which activate a phosphatidylinositol-calcium second messenger system. May be the cardiac P2Y receptor involved in the regulation of cardiac muscle contraction through modulation of L-type calcium currents. Is a receptor for leukotriene B4, a potent chemoattractant involved in inflammation and immune response.

Cellular Localization: Cell membrane, Multi-pass membrane protein

Molecular Weight: 38 kDa

Gene ID: 1241

UniProt: [Q15722](#)

Application Details

Application Notes: WB: 1:500-1:3000. IHC-P: 1:100-1:1000. Optimal dilutions/concentrations should be determined by the researcher. Not tested in other applications.

Comment: Positive Control: HeLaS3

Restrictions: For Research Use only

Handling

Format: Liquid

Concentration: 1 mg/mL

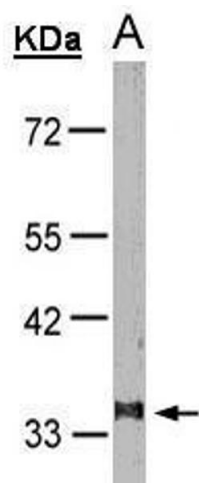
Buffer: 1XPBS (pH 7), 20 % Glycerol, 0.01 % Thimerosal

Preservative: Thimerosal (Merthiolate)

Precaution of Use: This product contains Thimerosal (Merthiolate): a POISONOUS AND HAZARDOUS SUBSTANCE which should be handled by trained staff only.

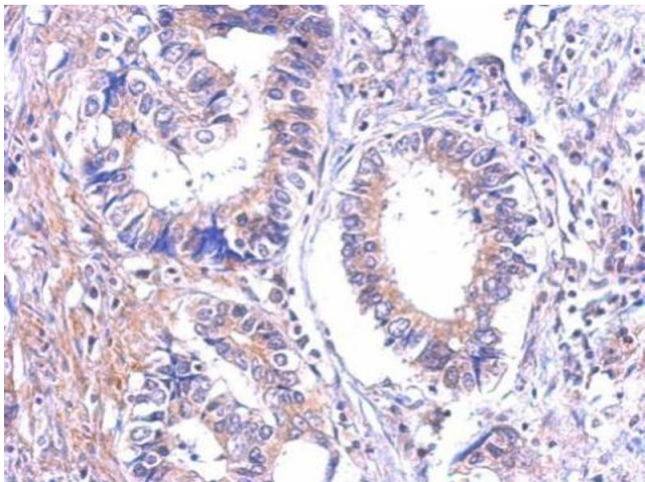
Storage: 4 °C, -20 °C

Storage Comment: Store as concentrated solution. Centrifuge briefly prior to opening vial. For short-term storage (1-2 weeks), store at 4°C. For long-term storage, aliquot and store at -20°C or below. Avoid multiple freeze-thaw cycles.



Western Blotting

Image 1. WB Image Sample(30 µg of whole cell lysate)
A:HeLa S3 , 10% SDS PAGE antibody diluted at 1:1000



Immunohistochemistry

Image 2. IHC-P Image Immunohistochemical analysis of
paraffin-embedded human gastric cancer, using P2Y7,
antibody at 1:500 dilution.