

Datasheet for ABIN2857021

anti-CXCR7 antibody

16 Images

7 Publications



[Go to Product page](#)

Overview

Quantity:	100 µL
Target:	CXCR7
Reactivity:	Human
Host:	Rabbit
Clonality:	Polyclonal
Conjugate:	This CXCR7 antibody is un-conjugated
Application:	Western Blotting (WB), ELISA, Flow Cytometry (FACS), Immunofluorescence (IF), Immunohistochemistry (Paraffin-embedded Sections) (IHC (p)), Immunoprecipitation (IP), Immunocytochemistry (ICC), Immunohistochemistry (Frozen Sections) (IHC (fro))

Product Details

Immunogen:	Carrier-protein conjugated synthetic peptide encompassing a sequence within the center region of human CXCR7. The exact sequence is proprietary.
Isotype:	IgG
Cross-Reactivity:	Human, Mouse
Characteristics:	Rabbit Polyclonal antibody to CXCR7 (C-X-C chemokine receptor type 7) CXCR7 antibody [C1C2], Internal
Purification:	Purified by antigen-affinity chromatography.
Grade:	KO Validated

Target Details

Target:	CXCR7
Alternative Name:	atypical chemokine receptor 3 (CXCR7 Products)
Background:	<p>This gene encodes a member of the G-protein coupled receptor family. Although this protein was earlier thought to be a receptor for vasoactive intestinal peptide (VIP), it is now considered to be an orphan receptor, in that its endogenous ligand has not been identified. The protein is also a coreceptor for human immunodeficiency viruses (HIV). Translocations involving this gene and HMGA2 on chromosome 12 have been observed in lipomas.</p> <p>Cellular Localization: Cell membrane</p>
Molecular Weight:	41 kDa
Gene ID:	57007
UniProt:	P25106
Pathways:	Myometrial Relaxation and Contraction , Negative Regulation of intrinsic apoptotic Signaling

Application Details

Application Notes:	WB: 1:500-1:3000. ICC/IF: 1:100-1:1000. IHC-P: 1:100-1:1000. Optimal dilutions/concentrations should be determined by the researcher. Not tested in other applications.
Comment:	Validatio: KO/KD, Orthogonal
Restrictions:	For Research Use only

Handling

Format:	Liquid
Concentration:	0.92 mg/mL
Buffer:	1XPBS pH 7, 20 % Glycerol, 0.025 % ProClin 300
Preservative:	ProClin
Precaution of Use:	This product contains ProClin: a POISONOUS AND HAZARDOUS SUBSTANCE which should be handled by trained staff only.
Storage:	4 °C,-20 °C
Storage Comment:	Store as concentrated solution. Centrifuge briefly prior to opening vial. For short-term storage (1-2 weeks), store at 4°C. For long-term storage, aliquot and store at -20°C or below. Avoid

multiple freeze-thaw cycles.

Publications

Product cited in:

Wei, Huang, Hsieh, Lin, Shyu, Chen, Hsieh: "Atypical chemokine receptor ACKR3/CXCR7 controls postnatal vasculogenesis and arterial specification by mesenchymal stem cells via Notch signaling." in: **Cell death & disease**, Vol. 11, Issue 5, pp. 307, (2020) ([PubMed](#)).

Liu, Song, Setroikromo, Chen, Hu, Chen, van der Wekken, Melgert, Timens, van den Berg, Saber, Haisma: "CX Chemokine Receptor 7 Contributes to Survival of KRAS-Mutant Non-Small Cell Lung Cancer upon Loss of Epidermal Growth Factor Receptor." in: **Cancers**, Vol. 11, Issue 4, (2019) ([PubMed](#)).

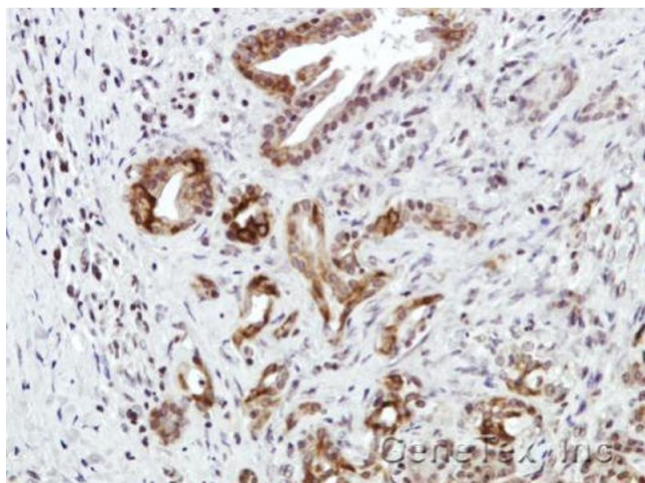
Xu, Tang, Wang, Liu, Fu, Luo: "CXCR7 promotes melanoma tumorigenesis via Src kinase signaling." in: **Cell death & disease**, Vol. 10, Issue 3, pp. 191, (2019) ([PubMed](#)).

Tam, Ko, Koon, Cheng, Lok, Lau, Leung, Fung, Chan, Lau: "Identification of Target Genes Involved in Wound Healing Angiogenesis of Endothelial Cells with the Treatment of a Chinese 2-Herb Formula." in: **PLoS ONE**, Vol. 10, Issue 10, pp. e0139342, (2016) ([PubMed](#)).

Liu, Carson-Walter, Walter: "Chemokine receptor CXCR7 is a functional receptor for CXCL12 in brain endothelial cells." in: **PLoS ONE**, Vol. 9, Issue 8, pp. e103938, (2015) ([PubMed](#)).

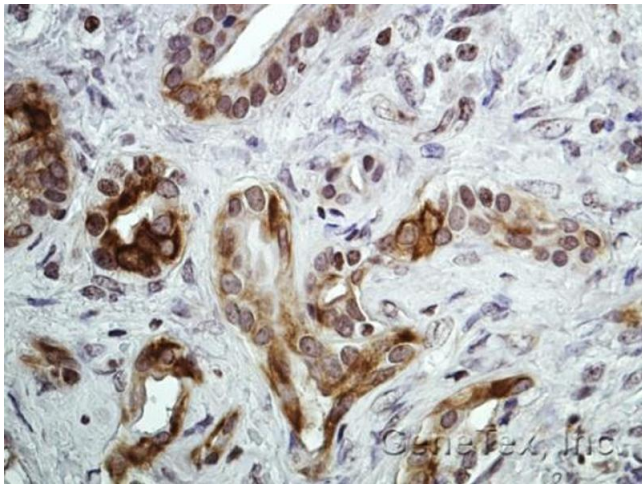
There are more publications referencing this product on: [Product page](#)

Images



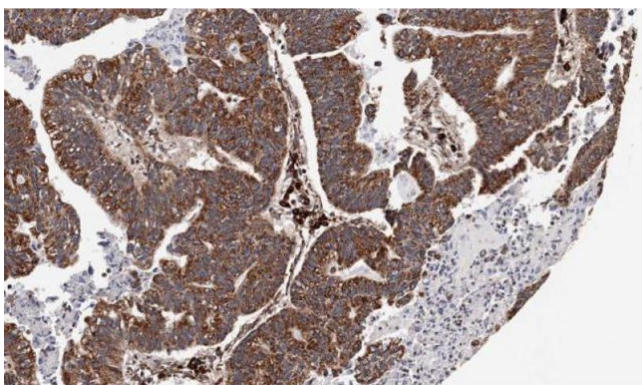
Immunohistochemistry

Image 1. IHC-P Image Immunohistochemical analysis of paraffin-embedded Human pancreatic tumor, using CXCR7, antibody at 1:100 dilution.



Immunohistochemistry

Image 2. IHC-P Image Immunohistochemical analysis of paraffin-embedded Human pancreatic tumor, using CXCR7, antibody at 1:100 dilution.



Immunohistochemistry

Image 3. IHC-P Image Immunohistochemical analysis of paraffin-embedded human gastric cancer, using CXCR7, antibody at 1:100 dilution.

Please check the [product details page](#) for more images. Overall 16 images are available for ABIN2857021.