



Datasheet for ABIN2857028  
**anti-ACVRL1 antibody (C-Term)**



[Go to Product page](#)

3 Images

Overview

Quantity:	100 µL
Target:	ACVRL1
Binding Specificity:	C-Term
Reactivity:	Human, Mouse
Host:	Rabbit
Clonality:	Polyclonal
Conjugate:	This ACVRL1 antibody is un-conjugated
Application:	Western Blotting (WB), Immunohistochemistry (Paraffin-embedded Sections) (IHC (p))

Product Details

Immunogen:	Carrier-protein conjugated synthetic peptide encompassing a sequence within the C-terminus region of human ACVRL1. The exact sequence is proprietary.
Isotype:	IgG
Characteristics:	Rabbit Polyclonal antibody to ACVRL1 (activin A receptor type II-like 1) ACVRL1 antibody [C3], C-term
Purification:	Purified by antigen-affinity chromatography.

Target Details

Target:	ACVRL1
Alternative Name:	ACVRL1 ( <a href="#">ACVRL1 Products</a> )

## Target Details

---

**Background:** This gene encodes a type I cell-surface receptor for the TGF-beta superfamily of ligands. It shares with other type I receptors a high degree of similarity in serine-threonine kinase subdomains, a glycine- and serine-rich region (called the GS domain) preceding the kinase domain, and a short C-terminal tail. The encoded protein, sometimes termed ALK1, shares similar domain structures with other closely related ALK or activin receptor-like kinase proteins that form a subfamily of receptor serine/threonine kinases. Mutations in this gene are associated with hemorrhagic telangiectasia type 2, also known as Rendu-Osler-Weber syndrome 2.

Cellular Localization: Membrane

---

**Molecular Weight:** 56 kDa

---

**Gene ID:** 94

## Application Details

---

**Application Notes:** Suggested dilution Reference IHC (Formalin-fixed paraffin-embedded sections) 1:100-1:1000\* Western blot 1:1000-1:10000\* Not tested in other applications. \*Optimal dilutions/concentrations should be determined by the researcher. Suggested dilution Reference IHC (Formalin-fixed paraffin-embedded sections) 1:100-1:1000\* Western blot 1:1000-1:10000\*

---

**Comment:** Positive Control: 293T , 293T mem , HepG2 , HepG2 mem , BCL-1

---

**Restrictions:** For Research Use only

## Handling

---

**Format:** Liquid

---

**Concentration:** 1 mg/mL

---

**Buffer:** 1XPBS, 1 % BSA, 20 % Glycerol ( pH 7). 0.01 % Thimerosal was added as a preservative.

---

**Preservative:** Thimerosal (Merthiolate)

---

**Precaution of Use:** This product contains Thimerosal (Merthiolate): a POISONOUS AND HAZARDOUS SUBSTANCE which should be handled by trained staff only.

---

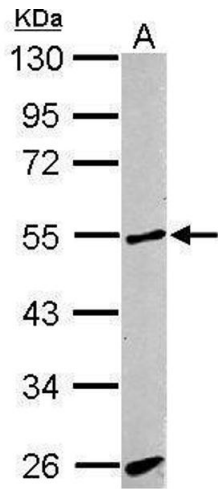
**Storage:** -20 °C

---

**Storage Comment:** Keep as concentrated solution. Aliquot and store at -20°C or below. Avoid multiple freeze-thaw

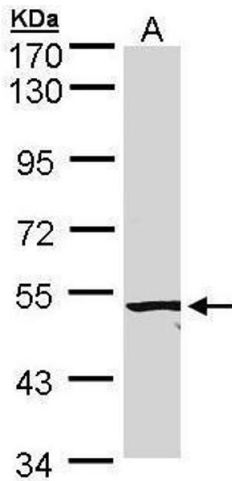
cycles.

Validation report #101924 for Immunofluorescence (IF)



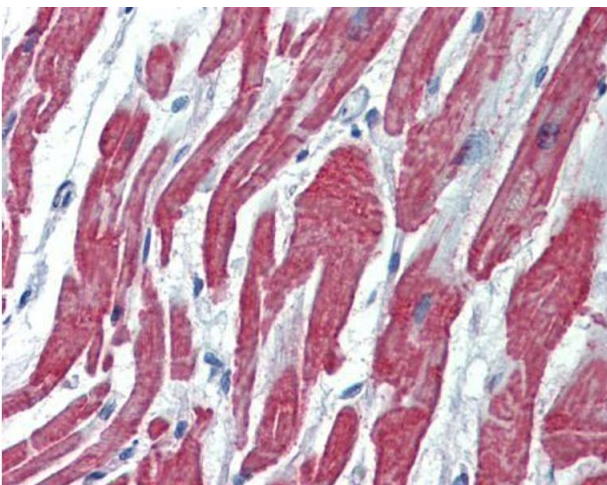
**Western Blotting**

**Image 1.** WB Image Sample (30 ug of whole cell lysate) A:  
BCL-1 10% SDS PAGE antibody diluted at 1:1000



**Western Blotting**

**Image 2.** WB Image Sample (20 ug of whole cell lysate) A:  
Hep G2 , membrane extract 7.5% SDS PAGE antibody diluted at 1:5000



**Immunohistochemistry**

**Image 3.** IHC-P Image Immunohistochemical analysis of paraffin-embedded human heart, using Activin A Receptor Type II-like 1, antibody(20 µg/ml).