



[Go to Product page](#)

Datasheet for ABIN2857030

anti-Adenosine A2a Receptor antibody (C-Term)

2 Images

Overview

Quantity:	100 µL
Target:	Adenosine A2a Receptor (ADORA2A)
Binding Specificity:	C-Term
Reactivity:	Human
Host:	Rabbit
Clonality:	Polyclonal
Conjugate:	This Adenosine A2a Receptor antibody is un-conjugated
Application:	Western Blotting (WB), Immunohistochemistry (Paraffin-embedded Sections) (IHC (p))

Product Details

Immunogen:	Carrier-protein conjugated synthetic peptide encompassing a sequence within the C-terminus region of human Adenosine A2a Receptor. The exact sequence is proprietary.
Isotype:	IgG
Cross-Reactivity:	Human
Characteristics:	Rabbit Polyclonal antibody to Adenosine A2a Receptor (adenosine A2a receptor) Adenosine A2a Receptor antibody [C2C3], C-term
Purification:	Purified by antigen-affinity chromatography.

Target Details

Target:	Adenosine A2a Receptor (ADORA2A)
---------	----------------------------------

Target Details

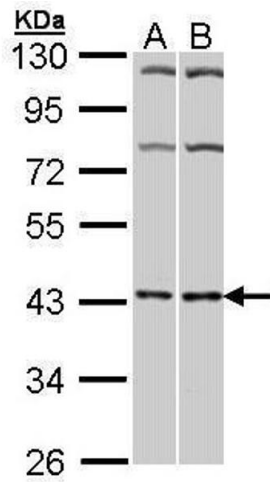
Alternative Name:	adenosine A2a receptor (ADORA2A Products)
Background:	This gene encodes a protein which is one of several receptor subtypes for adenosine. The activity of the encoded protein, a G-protein coupled receptor family member, is mediated by G proteins which activate adenylyl cyclase. The encoded protein is abundant in basal ganglia, vasculature and platelets and it is a major target of caffeine. Cellular Localization: Cell membrane
Molecular Weight:	45 kDa
Gene ID:	135
UniProt:	P29274
Pathways:	Neurotrophin Signaling Pathway , cAMP Metabolic Process , Synaptic Membrane , Feeding Behaviour , Cancer Immune Checkpoints

Application Details

Application Notes:	WB: 1:500-1:3000. IHC-P: 1:100-1:1000. Optimal dilutions/concentrations should be determined by the researcher. Not tested in other applications.
Comment:	Positive Control: HeLa , Molt-4
Restrictions:	For Research Use only

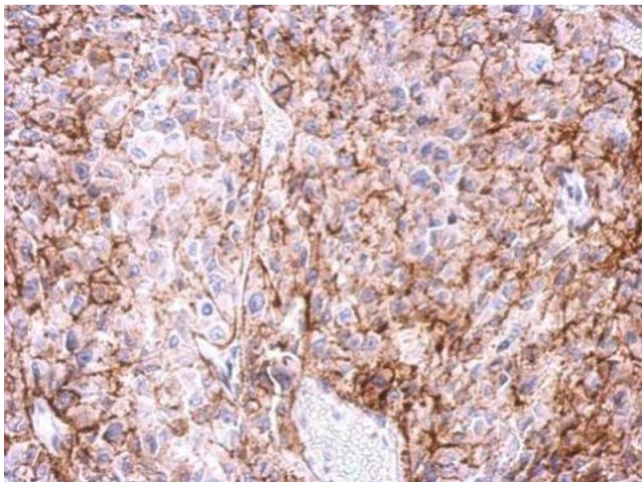
Handling

Format:	Liquid
Concentration:	1 mg/mL
Buffer:	1XPBS (pH 7), 20 % Glycerol, 0.01 % Thimerosal
Preservative:	Thimerosal (Merthiolate)
Precaution of Use:	This product contains Thimerosal (Merthiolate): a POISONOUS AND HAZARDOUS SUBSTANCE which should be handled by trained staff only.
Storage:	4 °C,-20 °C
Storage Comment:	Store as concentrated solution. Centrifuge briefly prior to opening vial. For short-term storage (1-2 weeks), store at 4°C. For long-term storage, aliquot and store at -20°C or below. Avoid multiple freeze-thaw cycles.



Western Blotting

Image 1. WB Image Sample (30 ug of whole cell lysate) A: HeLa B: Molt-4, 10% SDS PAGE antibody diluted at 1:1000



Immunohistochemistry

Image 2. IHC-P Image Immunohistochemical analysis of paraffin-embedded Ca922 xenograft, using Adenosine A2a Receptor, antibody at 1:500 dilution.