

Datasheet for ABIN2857031

anti-beta 2 Adrenergic Receptor antibody (C-Term)**3** Images[Go to Product page](#)

Overview

Quantity:	100 µL
Target:	beta 2 Adrenergic Receptor (ADRB2)
Binding Specificity:	C-Term
Reactivity:	Human
Host:	Rabbit
Clonality:	Polyclonal
Conjugate:	This beta 2 Adrenergic Receptor antibody is un-conjugated
Application:	Western Blotting (WB)

Product Details

Immunogen:	Carrier-protein conjugated synthetic peptide encompassing a sequence within the C-terminus region of human beta 2 Adrenergic Receptor. The exact sequence is proprietary.
Isotype:	IgG
Cross-Reactivity:	Human
Characteristics:	Rabbit Polyclonal antibody to beta 2 Adrenergic Receptor (adrenergic, beta-2-, receptor, surface) beta 2 Adrenergic Receptor antibody [C2C3], C-term
Purification:	Purified by antigen-affinity chromatography.

Target Details

Target:	beta 2 Adrenergic Receptor (ADRB2)
---------	------------------------------------

Target Details

Alternative Name:	adrenoceptor beta 2 (ADRB2 Products)
Background:	<p>This gene encodes beta-2-adrenergic receptor which is a member of the G protein-coupled receptor superfamily. This receptor is directly associated with one of its ultimate effectors, the class C L-type calcium channel Ca(V)1.2. This receptor-channel complex also contains a G protein, an adenylyl cyclase, cAMP-dependent kinase, and the counterbalancing phosphatase, PP2A. The assembly of the signaling complex provides a mechanism that ensures specific and rapid signaling by this G protein-coupled receptor. This gene is intronless. Different polymorphic forms, point mutations, and/or downregulation of this gene are associated with nocturnal asthma, obesity and type 2 diabetes.</p> <p>Cellular Localization: Cell membrane</p>
Molecular Weight:	46 kDa
Gene ID:	154
UniProt:	P07550
Pathways:	cAMP Metabolic Process , Synaptic Membrane , Regulation of G-Protein Coupled Receptor Protein Signaling , Brown Fat Cell Differentiation

Application Details

Application Notes:	WB: 1:500-1:3000. Optimal dilutions/concentrations should be determined by the researcher. Not tested in other applications.
Comment:	Validation: Overexpression
Restrictions:	For Research Use only

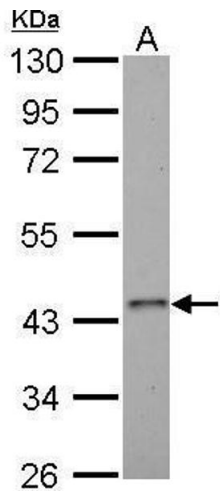
Handling

Format:	Liquid
Concentration:	1.31 mg/mL
Buffer:	1XPBS (pH 7), 20 % Glycerol, 0.025 % ProClin 300
Preservative:	ProClin
Precaution of Use:	This product contains ProClin: a POISONOUS AND HAZARDOUS SUBSTANCE which should be handled by trained staff only.
Storage:	4 °C,-20 °C

Handling

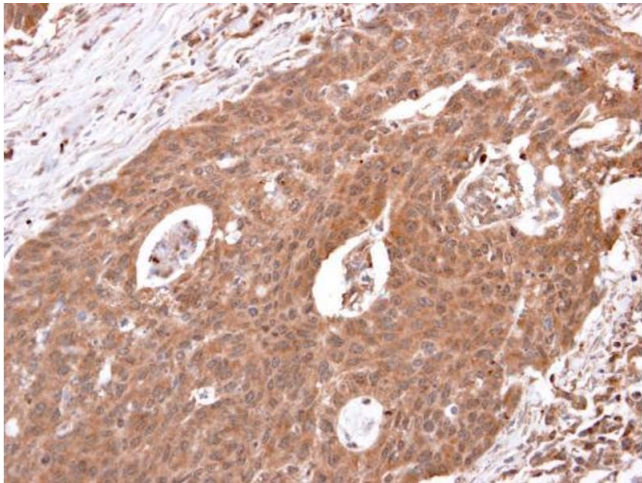
Storage Comment: Store as concentrated solution. Centrifuge briefly prior to opening vial. For short-term storage (1-2 weeks), store at 4°C. For long-term storage, aliquot and store at -20°C or below. Avoid multiple freeze-thaw cycles.

Images



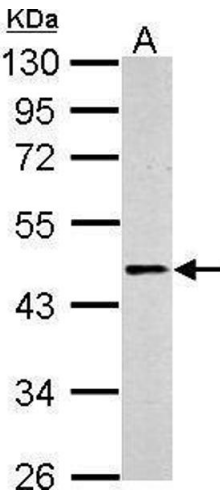
Western Blotting

Image 1. WB Image beta 2 Adrenergic Receptor antibody [C2C3], C-term detects ADRB2 protein by Western blot analysis. A. 30 µg HepG2 whole cell lysate/extract 10 % SDS-PAGE beta 2 Adrenergic Receptor antibody [C2C3], C-term , dilution: 1:500



Immunohistochemistry

Image 2. IHC-P Image beta 2 Adrenergic Receptor antibody [C2C3], C-term detects beta 2 Adrenergic Receptor protein at cytosol on human colon carcinoma by immunohistochemical analysis. Sample: beta 2 Adrenergic Receptor antibody [C2C3], C-term , dilution: 1:250.



Western Blotting

Image 3. WB Image Sample (30 ug of whole cell lysate) A: PC-12 10% SDS PAGE antibody diluted at 1:500