

Datasheet for ABIN2857033

anti-ALDH1A1 antibody (C-Term)

5 Images

1 Publication

[Go to Product page](#)

Overview

Quantity:	100 µL
Target:	ALDH1A1
Binding Specificity:	C-Term
Reactivity:	Human
Host:	Rabbit
Clonality:	Polyclonal
Conjugate:	This ALDH1A1 antibody is un-conjugated
Application:	Western Blotting (WB), Immunofluorescence (IF), Immunohistochemistry (Paraffin-embedded Sections) (IHC (p)), Immunocytochemistry (ICC)

Product Details

Immunogen:	Carrier-protein conjugated synthetic peptide encompassing a sequence within the C-terminus region of human ALDH1A1. The exact sequence is proprietary.
Isotype:	IgG
Cross-Reactivity:	Human, Mouse
Characteristics:	Rabbit Polyclonal antibody to ALDH1A1 (aldehyde dehydrogenase 1 family, member A1) ALDH1A1 antibody [C3], C-term
Purification:	Purified by antigen-affinity chromatography.

Target Details

Target:	ALDH1A1
---------	---------

Target Details

Alternative Name:	aldehyde dehydrogenase 1 family member A1 (ALDH1A1 Products)
Background:	<p>This protein belongs to the aldehyde dehydrogenases family of proteins. Aldehyde dehydrogenase is the second enzyme of the major oxidative pathway of alcohol metabolism. Two major liver isoforms of this enzyme, cytosolic and mitochondrial, can be distinguished by their electrophoretic mobilities, kinetic properties, and subcellular localizations. Most Caucasians have two major isozymes, while approximately 50 % of Orientals have only the cytosolic isozyme, missing the mitochondrial isozyme. A remarkably higher frequency of acute alcohol intoxication among Orientals than among Caucasians could be related to the absence of the mitochondrial isozyme. This gene encodes a cytosolic isoform, which has a high affinity for aldehydes.</p> <p>Cellular Localization: Cytoplasm</p>
Molecular Weight:	55 kDa
Gene ID:	216
UniProt:	P00352
Pathways:	Dopaminergic Neurogenesis

Application Details

Application Notes:	WB: 1:5000-1:20000. ICC/IF: 1:100-1:1000. IHC-P: 1:100-1:1000. Optimal dilutions/concentrations should be determined by the researcher. Not tested in other applications.
Comment:	Positive Control: A549 , mouse liver
Restrictions:	For Research Use only

Handling

Format:	Liquid
Concentration:	1 mg/mL
Buffer:	1XPBS (pH 7), 20 % Glycerol, 0.01 % Thimerosal
Preservative:	Thimerosal (Merthiolate)
Precaution of Use:	This product contains Thimerosal (Merthiolate): a POISONOUS AND HAZARDOUS SUBSTANCE which should be handled by trained staff only.

Handling

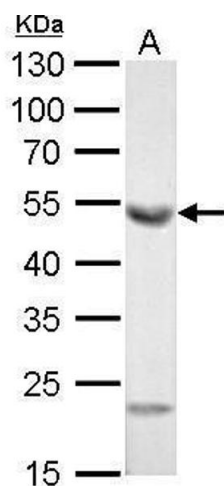
Storage: 4 °C, -20 °C

Storage Comment: Store as concentrated solution. Centrifuge briefly prior to opening vial. For short-term storage (1-2 weeks), store at 4°C. For long-term storage, aliquot and store at -20°C or below. Avoid multiple freeze-thaw cycles.

Publications

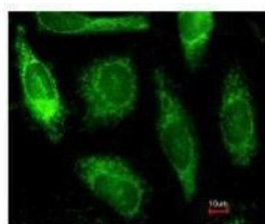
Product cited in: Huang, Lv, Liu, Ye, Yang, Li, Zhu, Wang, Cui, Jiang, Hao, Xu, Jin, Qian: "A SIRPα-Fc fusion protein enhances the antitumor effect of oncolytic adenovirus against ovarian cancer." in: **Molecular oncology**, Vol. 14, Issue 3, pp. 657-668, (2021) ([PubMed](#)).

Images

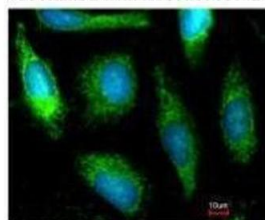


Western Blotting

Image 1. WB Image ALDH1A1 antibody [C3], C-term detects ALDH1A1 protein by Western blot analysis. A. 50 µg mouse liver lysate/extract 10 % SDS-PAGE ALDH1A1 antibody [C3], C-term , dilution: 1:10000

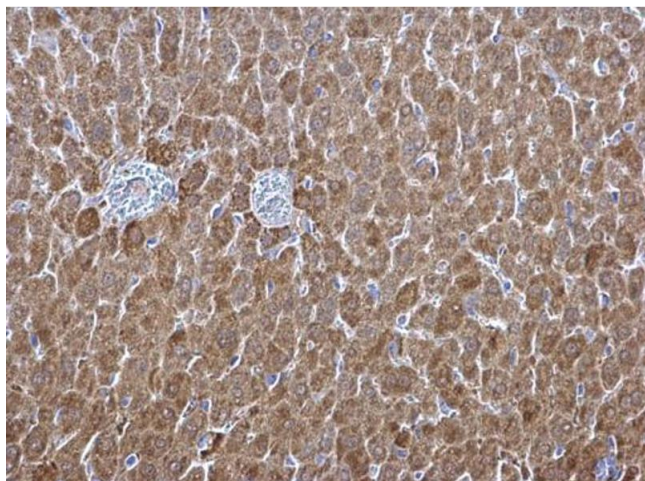


Costained with Hoechst 33342



Immunofluorescence

Image 2. ICC/IF Image Immunofluorescence analysis of methanol-fixed HeLa, using ALDH1A1, antibody at 1:200 dilution.



Immunohistochemistry

Image 3. IHC-P Image ALDH1A1 antibody [C3], C-term detects ALDH1A1 protein at cytosol on mouse liver by immunohistochemical analysis. Sample: Paraffin-embedded mouse liver. ALDH1A1 antibody [C3], C-term , dilution: 1:500.

Please check the [product details page](#) for more images. Overall 5 images are available for ABIN2857033.