

Datasheet for ABIN2857042  
**anti-SHROOM2 antibody (C-Term)**[Go to Product page](#)

2 Images

1 Publication

## Overview

Quantity:	100 µL
Target:	SHROOM2
Binding Specificity:	C-Term
Reactivity:	Human
Host:	Rabbit
Clonality:	Polyclonal
Application:	Western Blotting (WB), Immunohistochemistry (Paraffin-embedded Sections) (IHC (p)), Immunohistochemistry (Frozen Sections) (IHC (fro))

## Product Details

Immunogen:	Carrier-protein conjugated synthetic peptide encompassing a sequence within the C-terminus region of human APXL. The exact sequence is proprietary.
Isotype:	IgG
Cross-Reactivity:	Human, Monkey, Mouse
Characteristics:	Rabbit Polyclonal antibody to APXL (shroom family member 2) APXL antibody [C3], C-term
Purification:	Purified by antigen-affinity chromatography.

## Target Details

Target:	SHROOM2
Alternative Name:	shroom family member 2 ( <a href="#">SHROOM2 Products</a> )

## Target Details

**Background:** The protein encoded by this gene shares significant similarities with the apical protein from *Xenopus laevis* which is implicated in amiloride-sensitive sodium channel activity. This gene is a strong candidate gene for ocular albinism type 1 syndrome.

Cellular Localization: Apical cell membrane (By similarity) , Cell junction , tight junction (By similarity) , Cytoplasm , cytoskeleton (By similarity)

**Molecular Weight:** 176 kDa

**Gene ID:** 357

**UniProt:** [Q13796](#)

**Pathways:** [Cell-Cell Junction Organization](#), [Asymmetric Protein Localization](#)

## Application Details

**Application Notes:** WB: 1:500-1:3000. IHC-P: 1:100-1:1000. Optimal dilutions/concentrations should be determined by the researcher. Not tested in other applications.

**Comment:** Positive Control: HepG2

**Restrictions:** For Research Use only

## Handling

**Format:** Liquid

**Concentration:** 1 mg/mL

**Buffer:** 1XPBS ( pH 7), 20 % Glycerol, 0.01 % Thimerosal

**Preservative:** Thimerosal (Merthiolate)

**Precaution of Use:** This product contains Thimerosal (Merthiolate): a POISONOUS AND HAZARDOUS SUBSTANCE which should be handled by trained staff only.

**Storage:** 4 °C, -20 °C

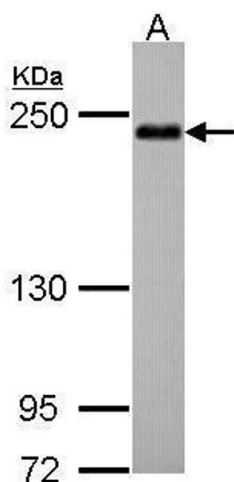
**Storage Comment:** Store as concentrated solution. Centrifuge briefly prior to opening vial. For short-term storage (1-2 weeks), store at 4°C. For long-term storage, aliquot and store at -20°C or below. Avoid multiple freeze-thaw cycles.

## Publications

Product cited in: Wu, Ming, Zhang, Wu, Wu, Yao: "Edaravone rescues the lung by inhibiting lipid peroxidation and pro-inflammatory cytokines in a rat model." in: **Chinese medical journal**, Vol. 127, Issue 5, pp. 968-70, (2014) ([PubMed](#)).

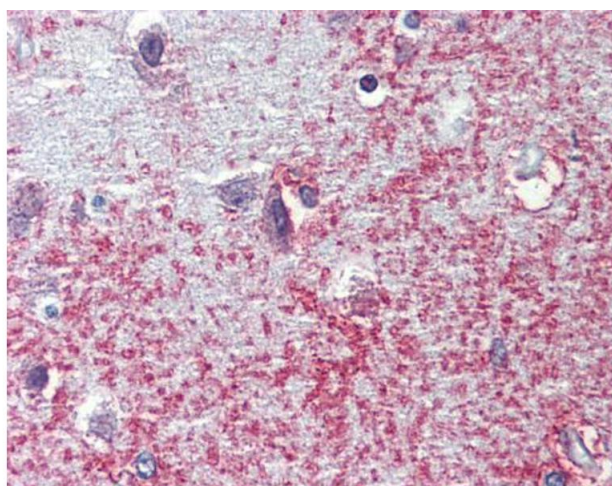
Chen, Wei, Zhuang, Qiao, Tang, Zhang, Wei, Fang, Chen, Du, Huang, Jiang, Hu, Hua: "Proteomic screening of anaerobically regulated promoters from Salmonella and its antitumor applications." in: **Molecular & cellular proteomics : MCP**, Vol. 10, Issue 6, pp. M111.009399, (2011) ([PubMed](#)).

## Images



### Western Blotting

**Image 1.** WB Image Sample (30 ug of whole cell lysate) A: Hep G2 , 5% SDS PAGE antibody diluted at 1:500



### Immunohistochemistry

**Image 2.** IHC-P Image Immunohistochemical analysis of paraffin-embedded human brain, cortex, using APXL, antibody(10 µg/ml).