

Datasheet for ABIN2857047  
**anti-Bcl-2 antibody (N-Term)**

16 Images

13 Publications

[Go to Product page](#)

## Overview

Quantity:	100 µL
Target:	Bcl-2 (BCL2)
Binding Specificity:	N-Term
Reactivity:	Human
Host:	Rabbit
Clonality:	Polyclonal
Conjugate:	This Bcl-2 antibody is un-conjugated
Application:	Western Blotting (WB), Immunofluorescence (IF), Immunohistochemistry (Paraffin-embedded Sections) (IHC (p)), Immunocytochemistry (ICC)

## Product Details

Immunogen:	Carrier-protein conjugated synthetic peptide encompassing a sequence within the N-terminus region of human Bcl-2. The exact sequence is proprietary.
Isotype:	IgG
Cross-Reactivity:	Cat, Dog, Human, Mouse, Rat, Zebrafish (Danio rerio)
Characteristics:	Rabbit Polyclonal antibody to BCL2 (B-cell CLL/lymphoma 2) Bcl-2 antibody [N1N2], N-term
Purification:	Purified by antigen-affinity chromatography.

## Target Details

Target:	Bcl-2 (BCL2)
---------	--------------

## Target Details

Alternative Name:	BCL2 apoptosis regulator ( <a href="#">BCL2 Products</a> )
Background:	<p>This gene encodes an integral outer mitochondrial membrane protein that blocks the apoptotic death of some cells such as lymphocytes. Constitutive expression of BCL2, such as in the case of translocation of BCL2 to Ig heavy chain locus, is thought to be the cause of follicular lymphoma. Two transcript variants, produced by alternate splicing, differ in their C-terminal ends.</p> <p>Cellular Localization: Mitochondrion outer membrane , Nucleus membrane , Endoplasmic reticulum membrane</p>
Molecular Weight:	26 kDa
Gene ID:	596
UniProt:	<a href="#">P10415</a>
Pathways:	<a href="#">MAPK Signaling</a> , <a href="#">PI3K-Akt Signaling</a> , <a href="#">Apoptosis</a> , <a href="#">Caspase Cascade in Apoptosis</a> , <a href="#">Regulation of Muscle Cell Differentiation</a> , <a href="#">Cell-Cell Junction Organization</a> , <a href="#">Skeletal Muscle Fiber Development</a> , <a href="#">Autophagy</a> , <a href="#">Smooth Muscle Cell Migration</a> , <a href="#">Negative Regulation of intrinsic apoptotic Signaling</a>

## Application Details

Application Notes:	WB: 1:500-1:3000. ICC/IF: 1:100-1:1000. IHC-P: 1:100-1:1000. Optimal dilutions/concentrations should be determined by the researcher. Not tested in other applications.
Comment:	<p>Positive Control: BCL2-transfected 293T</p> <p>Validation: Comparison, Orthogonal, Overexpression</p>
Restrictions:	For Research Use only

## Handling

Format:	Liquid
Concentration:	0.2 mg/mL
Buffer:	1XPBS ( pH 7), 1 % BSA, 20 % Glycerol, 0.025 % ProClin 300
Preservative:	ProClin
Precaution of Use:	This product contains ProClin: a POISONOUS AND HAZARDOUS SUBSTANCE which should be handled by trained staff only.
Storage:	4 °C, -20 °C

## Handling

Storage Comment: Store as concentrated solution. Centrifuge briefly prior to opening vial. For short-term storage (1-2 weeks), store at 4°C. For long-term storage, aliquot and store at -20°C or below. Avoid multiple freeze-thaw cycles.

## Publications

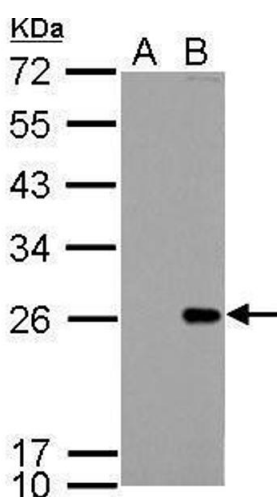
Product cited in: Leeds, Dennis, Lukas, Stoinski, Willis, Schook: "Biologically validating the measurement of oxytocin in western lowland gorilla (*Gorilla gorilla gorilla*) urine and saliva using a commercial enzyme immunoassay." in: **Primates; journal of primatology**, (2018) ([PubMed](#)).

Boose, White, Brand, Meinelt, Snodgrass: "Infant handling in bonobos (*Pan paniscus*): Exploring functional hypotheses and the relationship to oxytocin." in: **Physiology & behavior**, Vol. 193, Issue Pt A, pp. 154-166, (2018) ([PubMed](#)).

Brandtzaeg, Johnsen, Roberg-Larsen, Seip, MacLean, Gesquiere, Leknes, Lundanes, Wilson: "Proteomics tools reveal startlingly high amounts of oxytocin in plasma and serum." in: **Scientific reports**, Vol. 6, pp. 31693, (2016) ([PubMed](#)).

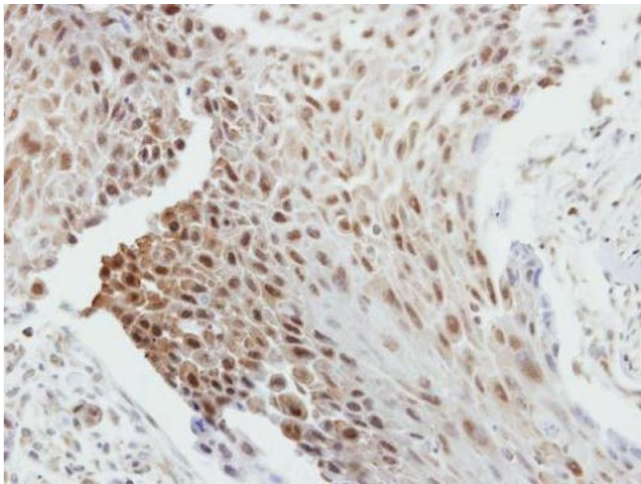
There are more publications referencing this product on: [Product page](#)

## Images



### Western Blotting

**Image 1.** WB Image Bcl-2 antibody detects Bcl-2 protein by Western blot analysis. A. 30 µg 293T whole cell lysate/extract B. 30 µg whole cell lysate/extract of human Bcl-2-transfected 293T cells 12% SDS PAGE Bcl-2 antibody , dilution: 1:5000

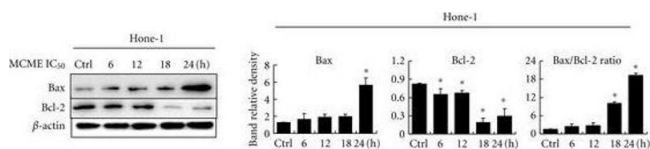


### Immunohistochemistry

**Image 2.** IHC-P Image Immunohistochemical analysis of paraffin-embedded human breast cancer, using Bcl-2, antibody at 1:250 dilution.

### Western Blotting

**Image 3.** Expression of Bcl-2 family proteins in MCME-treated cancer cells. Hone-1, AGS, HCT-116, and CL1-0 cells were treated for 6, 12, 18, and 24 hours with MCME at a concentration of 0.35, 0.25, 0.3, and 0.25 mg/mL, respectively. Equal amounts of lysates from these cancer cells treated with MCME were immunoblotted with anti-Bax and anti-Bcl-2 antibodies. Blots were reprobed with an antibody for  $\beta$ -actin to control for protein loading and transfer. Gels shown are representative of those obtained from three independent experiments. The protein expression levels were quantified and normalized to  $\beta$ -actin and expressed as the fold-change to the respective control. Asterisk (\*) indicates a significant P value < 0.05 as compared to controls. - figure provided by CiteAb. Source: PMID32635653



Please check the [product details page](#) for more images. Overall 16 images are available for ABIN2857047.