

Datasheet for ABIN2857056

anti-RecQ Protein-Like (DNA Helicase Q1-Like) (RECQL) (N-Term) antibody[Go to Product page](#)

4 Images

Overview

Quantity:	100 µL
Target:	RecQ Protein-Like (DNA Helicase Q1-Like) (RECQL)
Binding Specificity:	N-Term
Reactivity:	Human
Host:	Rabbit
Clonality:	Polyclonal
Conjugate:	Un-conjugated
Application:	Western Blotting (WB), Immunofluorescence (IF), Immunohistochemistry (Paraffin-embedded Sections) (IHC (p)), Immunoprecipitation (IP), Immunocytochemistry (ICC)

Product Details

Immunogen:	Recombinant protein encompassing a sequence within the N-terminus region of human RecQ1. The exact sequence is proprietary.
Isotype:	IgG
Cross-Reactivity:	Cow (Bovine)
Cross-Reactivity (Details):	Bovine (86 %)
Characteristics:	Rabbit polyclonal antibody to RecQ1 (RecQ protein-like (DNA helicase Q1-like)) RecQ1 antibody [N1N2], N-term
Purification:	Purified by antigen-affinity chromatography.

Target Details

Target:	RecQ Protein-Like (DNA Helicase Q1-Like) (RECQL)
Alternative Name:	RecQ1 (RECQL Products)
Background:	<p>The protein encoded by this gene is a member of the RecQ DNA helicase family. DNA helicases are enzymes involved in various types of DNA repair, including mismatch repair, nucleotide excision repair and direct repair. Some members of this family are associated with genetic disorders with predisposition to malignancy and chromosomal instability. The biological function of this helicase has not yet been determined. Two alternatively spliced transcripts, which encode the same isoform but differ in their 5' and 3' UTRs, have been described.</p> <p>Cellular Localization: Nucleus</p>
Molecular Weight:	73 kDa
Gene ID:	5965

Application Details

Application Notes:	<p>Suggested dilution Reference ICC/IF 1:100-1:1000* IHC (Formalin-fixed paraffin-embedded sections) 1:100-1:1000* Immunoprecipitation 1:100-1:500* Western blot 1:500-1:3000* Not tested in other applications. *Optimal dilutions/concentrations should be determined by the researcher.Suggested dilutionReferenceICC/IF1:100-1:1000* IHC (Formalin-fixed paraffin-embedded sections)1:100-1:1000* Immunoprecipitation1:100-1:500* Western blot1:500-1:3000*</p>
Comment:	Positive Control: A431 , HeLa , A375
Restrictions:	For Research Use only

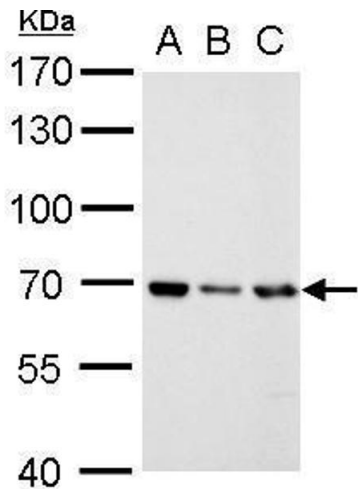
Handling

Format:	Liquid
Concentration:	1 mg/mL
Buffer:	1XPBS, 20 % Glycerol (pH 7). 0.01 % Thimerosal was added as a preservative.
Preservative:	Thimerosal (Merthiolate)
Precaution of Use:	This product contains Thimerosal (Merthiolate): a POISONOUS AND HAZARDOUS SUBSTANCE which should be handled by trained staff only.
Storage:	-20 °C

Handling

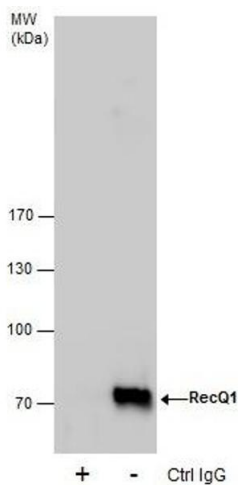
Storage Comment: Keep as concentrated solution. Aliquot and store at -20°C or below. Avoid multiple freeze-thaw cycles.

Images



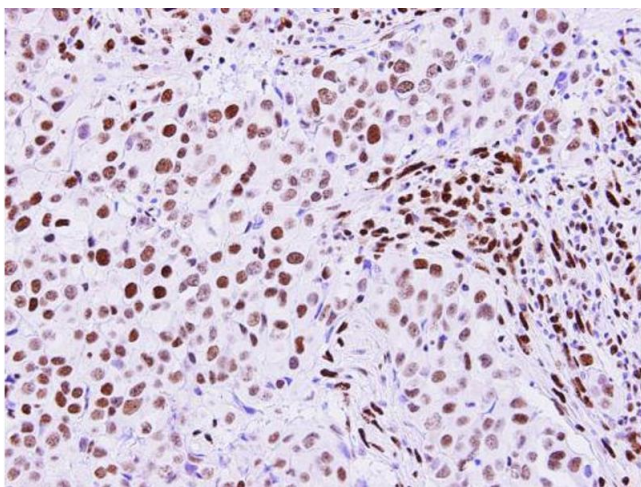
Western Blotting

Image 1. WB Image RecQ1 antibody [N1N2], N-term detects RecQ1 protein by Western blot analysis. A. 30 µg A431 whole cell lysate/extract B. 30 µg HeLa whole cell lysate/extract C. 30 µg A375 whole cell lysate/extract 7.5 % SDS-PAGE RecQ1 antibody [N1N2], N-term , dilution: 1:1000



Immunoprecipitation

Image 2. IP Image Immunoprecipitation of RecQ1 protein from HeLa whole cell extracts using 5 µg of RecQ1 antibody [N1N2], N-term, Western blot analysis was performed using RecQ1 antibody [N1N2], N-term, EasyBlot anti-Rabbit IgG was used as a secondary reagent.



Immunohistochemistry

Image 3. IHC-P Image RecQ1 antibody [N1N2], N-term detects RecQ1 protein at nucleus on human breast carcinoma by immunohistochemical analysis. Sample: Paraffin-embedded human breast carcinoma. RecQ1 antibody [N1N2], N-term , diluted at 1:250.

Please check the [product details page](#) for more images. Overall 4 images are available for ABIN2857056.