



Datasheet for ABIN2857058
anti-RPA3 antibody



[Go to Product page](#)

2 Images

Overview

Quantity:	100 µL
Target:	RPA3
Reactivity:	Human
Host:	Rabbit
Clonality:	Polyclonal
Conjugate:	This RPA3 antibody is un-conjugated
Application:	Western Blotting (WB), Immunohistochemistry (Paraffin-embedded Sections) (IHC (p))

Product Details

Immunogen:	Full length human RPA14 Recombinant protein.
Isotype:	IgG
Cross-Reactivity:	Human
Characteristics:	Rabbit Polyclonal antibody to RPA14 (replication protein A3, 14 kDa) RPA14 antibody
Purification:	Purified by antigen-affinity chromatography.

Target Details

Target:	RPA3
Alternative Name:	replication protein A3 (RPA3 Products)
Background:	Cellular Localization: Nucleus

Target Details

Molecular Weight: 14 kDa

Gene ID: 6119

UniProt: [P35244](#)

Pathways: [Telomere Maintenance](#), [DNA Damage Repair](#), [Mitotic G1-G1/S Phases](#), [DNA Replication](#), [Synthesis of DNA](#)

Application Details

Application Notes: WB: 1:500-1:3000. IHC-P: 1:100-1:1000. Optimal dilutions/concentrations should be determined by the researcher. Not tested in other applications.

Restrictions: For Research Use only

Handling

Format: Liquid

Concentration: 1 mg/mL

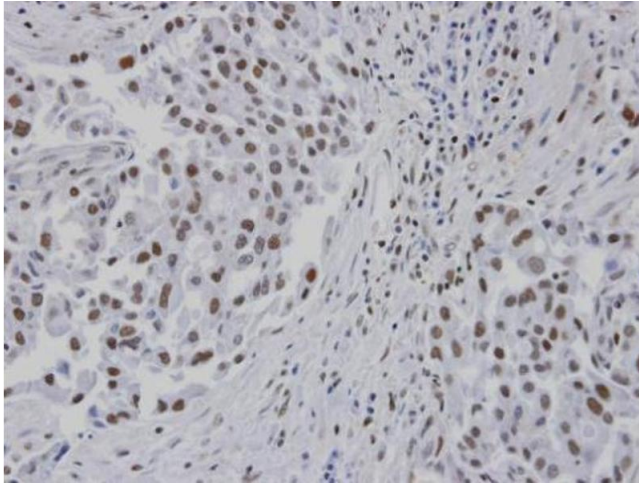
Buffer: 1XPBS (pH 7), 20 % Glycerol, 0.01 % Thimerosal

Preservative: Thimerosal (Merthiolate)

Precaution of Use: This product contains Thimerosal (Merthiolate): a POISONOUS AND HAZARDOUS SUBSTANCE which should be handled by trained staff only.

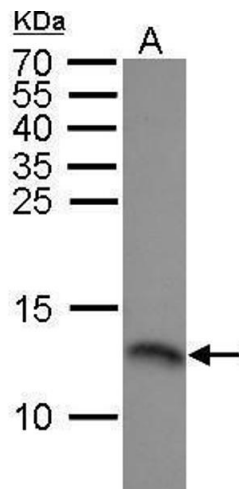
Storage: 4 °C, -20 °C

Storage Comment: Store as concentrated solution. Centrifuge briefly prior to opening vial. For short-term storage (1-2 weeks), store at 4°C. For long-term storage, aliquot and store at -20°C or below. Avoid multiple freeze-thaw cycles.



Immunohistochemistry

Image 1. IHC-P Image Immunohistochemical analysis of paraffin-embedded human lung cancer patient tumor, using RPA 14 kDa subunit , antibody at 1:100 dilution.



Western Blotting

Image 2. WB Image RPA14 antibody detects RPA14 protein by Western blot analysis. A. 30 µg 293T whole cell lysate/extract 15 % SDS-PAGE RPA14 antibody , dilution: 1:1000