

Datasheet for ABIN2857060

**anti-NHEJ1 antibody**

## 4 Images

[Go to Product page](#)

## Overview

Quantity:	100 µL
Target:	NHEJ1
Reactivity:	Human
Host:	Rabbit
Clonality:	Polyclonal
Conjugate:	This NHEJ1 antibody is un-conjugated
Application:	Western Blotting (WB), Immunofluorescence (IF), Immunohistochemistry (Paraffin-embedded Sections) (IHC (p)), Immunoprecipitation (IP), Immunocytochemistry (ICC)

## Product Details

Immunogen:	Recombinant protein encompassing a sequence within the center region of human XLF. The exact sequence is proprietary.
Isotype:	IgG
Cross-Reactivity:	Human
Characteristics:	Rabbit polyclonal antibody to XLF (nonhomologous end-joining factor 1) XLF antibody [N3C3]
Purification:	Purified by antigen-affinity chromatography.

## Target Details

Target:	NHEJ1
Alternative Name:	non-homologous end joining factor 1 ( <a href="#">NHEJ1 Products</a> )

## Target Details

**Background:** Double-strand breaks in DNA result from genotoxic stresses and are among the most damaging of DNA lesions. This gene encodes a DNA repair factor essential for the nonhomologous end-joining pathway, which preferentially mediates repair of double-stranded breaks. Mutations in this gene cause different kinds of severe combined immunodeficiency disorders.

Cellular Localization: Nucleus

**Molecular Weight:** 33 kDa

**Gene ID:** 79840

**UniProt:** [Q9H9Q4](#)

**Pathways:** [DNA Damage Repair](#)

## Application Details

**Application Notes:** WB: 1:500-1:3000. ICC/IF: 1:100-1:1000. IHC-P: 1:100-1:1000. IP: 1:100-1:500. Optimal dilutions/concentrations should be determined by the researcher. Not tested in other applications.

**Comment:** Positive Control: HepG2

**Restrictions:** For Research Use only

## Handling

**Format:** Liquid

**Concentration:** 1 mg/mL

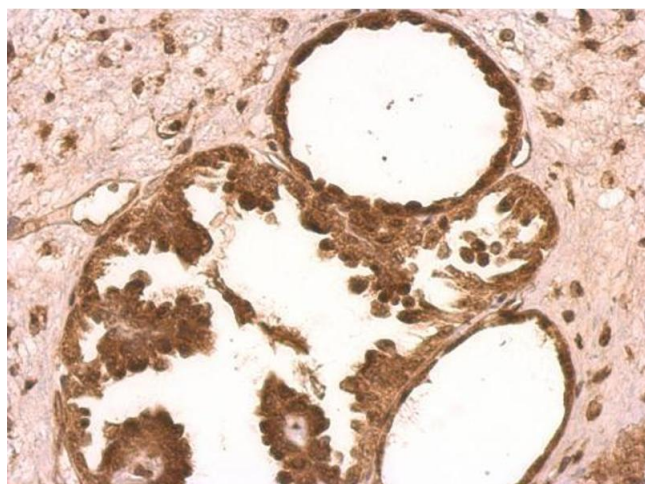
**Buffer:** 1XPBS ( pH 7), 20 % Glycerol, 0.01 % Thimerosal

**Preservative:** Thimerosal (Merthiolate)

**Precaution of Use:** This product contains Thimerosal (Merthiolate): a POISONOUS AND HAZARDOUS SUBSTANCE which should be handled by trained staff only.

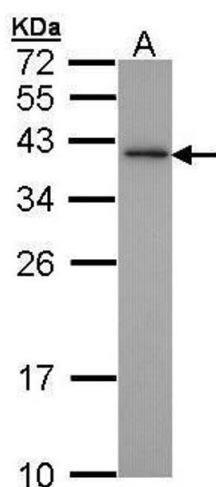
**Storage:** 4 °C, -20 °C

**Storage Comment:** Store as concentrated solution. Centrifuge briefly prior to opening vial. For short-term storage (1-2 weeks), store at 4°C. For long-term storage, aliquot and store at -20°C or below. Avoid multiple freeze-thaw cycles.



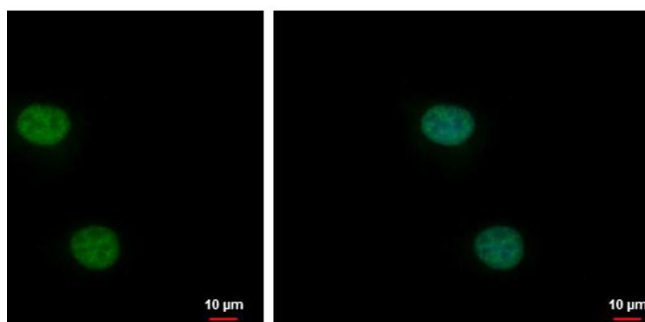
### Immunohistochemistry

**Image 1.** IHC-P Image XLF antibody [N3C3] detects XLF protein on human ovarian carcinoma by immunohistochemical analysis. Sample: Paraffin-embedded ovarian carcinoma. XLF antibody [N3C3], dilution: 1:500.



### Western Blotting

**Image 2.** WB Image Sample (30 ug of whole cell lysate) A: Hep G2, 12% SDS PAGE antibody diluted at 1:1000



### Immunofluorescence

**Image 3.** ICC/IF Image XLF antibody [N3C3] detects XLF protein at nucleus by immunofluorescent analysis. Sample: HeLa cells were fixed in 4% paraformaldehyde at RT for 15 min. Green: XLF protein stained by XLF antibody [N3C3], diluted at 1:1000. Blue: Hoechst 33342 staining.

Please check the [product details page](#) for more images. Overall 4 images are available for ABIN2857060.