

Datasheet for ABIN2857061
anti-XRCC3 antibody



[Go to Product page](#)

1 Image

Overview

| | |
|--------------|--------------------------------------|
| Quantity: | 100 µL |
| Target: | XRCC3 |
| Reactivity: | Human |
| Host: | Rabbit |
| Clonality: | Polyclonal |
| Conjugate: | This XRCC3 antibody is un-conjugated |
| Application: | Western Blotting (WB) |

Product Details

| | |
|-------------------|---|
| Immunogen: | Recombinant protein encompassing a sequence within the center region of human XRCC3. The exact sequence is proprietary. |
| Isotype: | IgG |
| Cross-Reactivity: | Human |
| Characteristics: | Rabbit polyclonal antibody to XRCC3 (X-ray repair complementing defective repair in Chinese hamster cells 3) XRCC3 antibody [N1N3] |
| Purification: | Purified by antigen-affinity chromatography. |

Target Details

| | |
|-------------------|---|
| Target: | XRCC3 |
| Alternative Name: | X-ray repair cross complementing 3 (XRCC3 Products) |

Target Details

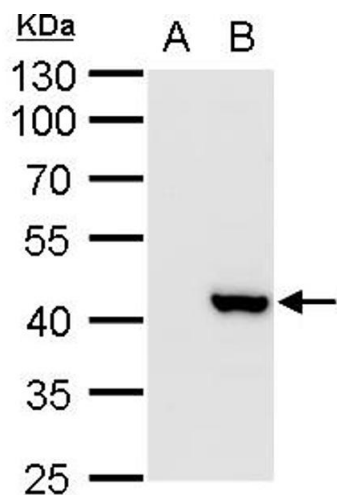
| | |
|-------------------|---|
| Background: | <p>This gene encodes a member of the RecA/Rad51-related protein family that participates in homologous recombination to maintain chromosome stability and repair DNA damage. This gene functionally complements Chinese hamster irs1SF, a repair-deficient mutant that exhibits hypersensitivity to a number of different DNA-damaging agents and is chromosomally unstable. A rare microsatellite polymorphism in this gene is associated with cancer in patients of varying radiosensitivity. Alternatively spliced transcript variants encoding the same protein have been identified.</p> <p>Cellular Localization: Nucleus</p> |
| Molecular Weight: | 38 kDa |
| Gene ID: | 7517 |
| UniProt: | O43542 |
| Pathways: | DNA Damage Repair |

Application Details

| | |
|--------------------|--|
| Application Notes: | <p>WB: 1:1000-1:10000. Optimal dilutions/concentrations should be determined by the researcher.</p> <p>Not tested in other applications.</p> |
| Comment: | Positive Control: DDDDK-human XRCC3-transfected 293T cells |
| Restrictions: | For Research Use only |

Handling

| | |
|--------------------|--|
| Format: | Liquid |
| Concentration: | 1 mg/mL |
| Buffer: | 1XPBS (pH 7), 20 % Glycerol, 0.01 % Thimerosal |
| Preservative: | Thimerosal (Merthiolate) |
| Precaution of Use: | This product contains Thimerosal (Merthiolate): a POISONOUS AND HAZARDOUS SUBSTANCE which should be handled by trained staff only. |
| Storage: | 4 °C, -20 °C |
| Storage Comment: | Store as concentrated solution. Centrifuge briefly prior to opening vial. For short-term storage (1-2 weeks), store at 4°C. For long-term storage, aliquot and store at -20°C or below. Avoid multiple freeze-thaw cycles. |



Western Blotting

Image 1. WB Image XRCC3 antibody detects XRCC3 protein by western blot analysis. A. 30 µg 293T whole cell lysate/extract B. 30 µg whole cell lysate/extract of DDDDK-human XRCC3-transfected 293T cells 10 % SDS-PAGE XRCC3 antibody , dilution: 1:5000