

Datasheet for ABIN2857072

anti-GAPDH antibody

120 Images

105 Publications



[Go to Product page](#)

Overview

Quantity:	100 µL
Target:	GAPDH
Reactivity:	Human
Host:	Rabbit
Clonality:	Polyclonal
Conjugate:	This GAPDH antibody is un-conjugated
Application:	Western Blotting (WB), Immunofluorescence (IF), Immunohistochemistry (Paraffin-embedded Sections) (IHC (p)), Immunocytochemistry (ICC), Immunoprecipitation (IP)

Product Details

Immunogen:	Recombinant protein encompassing a sequence within the center region of human GAPDH. The exact sequence is proprietary.
Isotype:	IgG
Cross-Reactivity:	Bacteria, C. elegans, Chanos chanos, Chicken, Cow, Dog, Drosophila melanogaster, E. coli, Fish, Hamster, Human, Insect, Monkey, Mosquito, Mouse, Nematode, Ochotona princeps, Pig, Plant, Rabbit, Rat, Saccharomyces cerevisiae, Zebrafish (Danio rerio)
Characteristics:	Rabbit Polyclonal antibody to GAPDH (glyceraldehyde-3-phosphate dehydrogenase) GAPDH antibody
Purification:	Purified by antigen-affinity chromatography.

Target Details

Target:	GAPDH
Alternative Name:	glyceraldehyde-3-phosphate dehydrogenase (GAPDH Products)
Background:	<p>The product of this gene catalyzes an important energy-yielding step in carbohydrate metabolism, the reversible oxidative phosphorylation of glyceraldehyde-3-phosphate in the presence of inorganic phosphate and nicotinamide adenine dinucleotide (NAD). The enzyme exists as a tetramer of identical chains. Many pseudogenes similar to this locus are present in the human genome.</p> <p>Cellular Localization: Cytoplasm , perinuclear region , Membrane</p>
Molecular Weight:	36 kDa
Gene ID:	2597
UniProt:	P04406

Application Details

Application Notes:	WB: 1:5000-1:100000. ICC/IF: 1:100-1:1000. IHC-P: 1:100-1:1000. IP: 1:100-1:500. Optimal dilutions/concentrations should be determined by the researcher. Not tested in other applications.
Comment:	Positive Control: PC-12 , Rat2 , Neuro 2A , C8D30 , NIH-3T3 , Raw264.7 , C2C12 , E.coli M15 Validation: Orthogonal
Restrictions:	For Research Use only

Handling

Format:	Liquid
Concentration:	0.11 mg/mL
Buffer:	1XPBS, 1 % BSA, 20 % Glycerol (pH 7), 0.025 % ProClin 300
Preservative:	ProClin
Precaution of Use:	This product contains ProClin: a POISONOUS AND HAZARDOUS SUBSTANCE which should be handled by trained staff only.
Storage:	4 °C,-20 °C
Storage Comment:	Store as concentrated solution. Centrifuge briefly prior to opening vial. For short-term storage

(1-2 weeks), store at 4°C. For long-term storage, aliquot and store at -20°C or below. Avoid multiple freeze-thaw cycles.

Publications

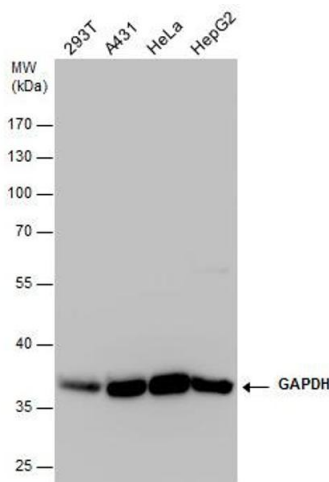
Product cited in:

Motawi, Mahdy, El-Sawalhi, Ali, El-Telbany: "Serum levels of chemerin, apelin, vaspin, and omentin-1 in obese type 2 diabetic Egyptian patients with coronary artery stenosis." in:

Canadian journal of physiology and pharmacology, Vol. 96, Issue 1, pp. 38-44, (2018) ([PubMed](#)).

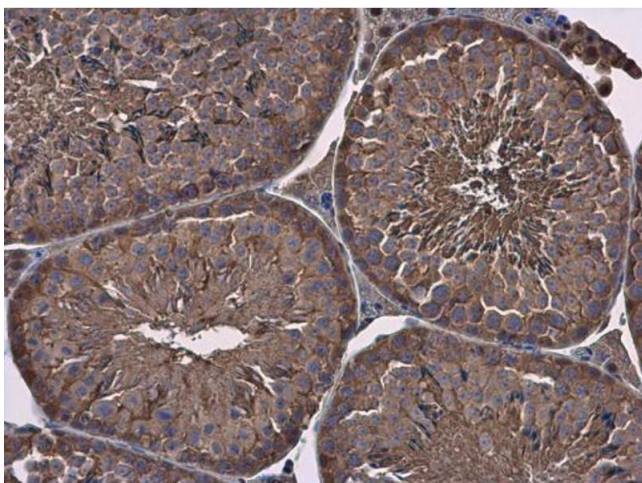
There are more publications referencing this product on: [Product page](#)

Images



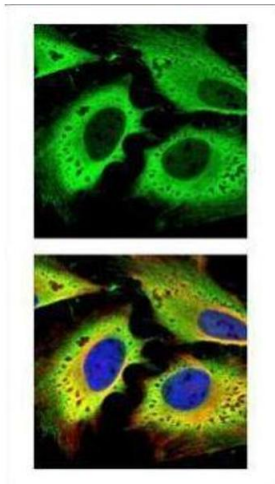
Western Blotting

Image 1. WB Image GAPDH antibody detects GAPDH protein by western blot analysis. Various whole cell extracts (30 µg) were separated by 10% SDS-PAGE, and the membrane was blotted with GAPDH antibody, diluted at a dilution of 1:100000.



Immunohistochemistry

Image 2. IHC-P Image GAPDH antibody detects GAPDH protein at cytoplasm in mouse testis by immunohistochemical analysis. Sample: Paraffin-embedded mouse testis. GAPDH antibody, diluted at 1:500.



Immunofluorescence

Image 3. ICC/IF Image Confocal immunofluorescence analysis (Olympus FV10i) of paraformaldehyde-fixed HeLa, using GAPDH, antibody (green) at 1:500 dilution. Alpha-tubulin filaments were labeled with (red) at 1:2000.

Please check the [product details page](#) for more images. Overall 120 images are available for ABIN2857072.