

Datasheet for ABIN2857081

anti-Crossover junction endonuclease EME1 (EME1) (Internal Region) antibody[Go to Product page](#)**1** Image

Overview

Quantity:	100 µL
Target:	Crossover junction endonuclease EME1 (EME1)
Binding Specificity:	Internal Region
Reactivity:	Human
Host:	Rabbit
Clonality:	Polyclonal
Conjugate:	Un-conjugated
Application:	Western Blotting (WB)

Product Details

Immunogen:	Recombinant protein encompassing a sequence within the center region of human EME1. The exact sequence is proprietary.
Isotype:	IgG
Characteristics:	Rabbit Polyclonal antibody to EME1 (essential meiotic endonuclease 1 homolog 1 (S. pombe)) EME1 antibody [N3C2], Internal
Purification:	Purified by antigen-affinity chromatography.

Target Details

Target:	Crossover junction endonuclease EME1 (EME1)
Alternative Name:	EME1 (EME1 Products)

Target Details

Background: EME1 and MUS81 (MIM 606591) form an endonuclease complex that cleaves branched DNA structures, especially those arising during stalled DNA replication (Abraham et al., 2003 [PubMed 14609959]).[supplied by OMIM]

Cellular Localization: Nucleus , nucleolus

Molecular Weight: 63 kDa

Gene ID: 146956

Application Details

Application Notes: Suggested dilution Reference Western blot 1:500-1:3000* Not tested in other applications.
Optimal dilutions/concentrations should be determined by the researcher.Suggested dilutionReferenceWestern blot1:500-1:3000

Comment: Positive Control: HeLa

Restrictions: For Research Use only

Handling

Format: Liquid

Concentration: 1 mg/mL

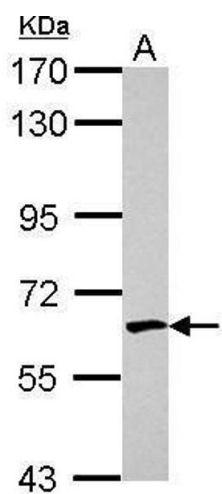
Buffer: 1XPBS, 1 % BSA, 20 % Glycerol (pH 7). 0.01 % Thimerosal was added as a preservative.

Preservative: Thimerosal (Merthiolate)

Precaution of Use: This product contains Thimerosal (Merthiolate): a POISONOUS AND HAZARDOUS SUBSTANCE which should be handled by trained staff only.

Storage: -20 °C

Storage Comment: Keep as concentrated solution. Aliquot and store at -20°C or below. Avoid multiple freeze-thaw cycles.



Western Blotting

Image 1. WB Image Sample (30 ug of whole cell lysate) A:
HeLa 7.5% SDS PAGE antibody diluted at 1:1000