

Datasheet for ABIN2857082  
**anti-ERCC8 antibody (Internal Region)**

## 3 Images

[Go to Product page](#)

## Overview

Quantity:	100 µL
Target:	ERCC8
Binding Specificity:	Internal Region
Reactivity:	Human, Mouse
Host:	Rabbit
Clonality:	Polyclonal
Conjugate:	This ERCC8 antibody is un-conjugated
Application:	Western Blotting (WB), Immunofluorescence (IF), Immunocytochemistry (ICC), Functional Studies (Func)

## Product Details

Immunogen:	Recombinant protein encompassing a sequence within the center region of human ERCC8. The exact sequence is proprietary.
Isotype:	IgG
Characteristics:	Rabbit Polyclonal antibody to ERCC8 (excision repair cross-complementing rodent repair deficiency, complementation group 8) ERCC8 antibody [N2C2], Internal
Purification:	Purified by antigen-affinity chromatography.

## Target Details

Target:	ERCC8
---------	-------

## Target Details

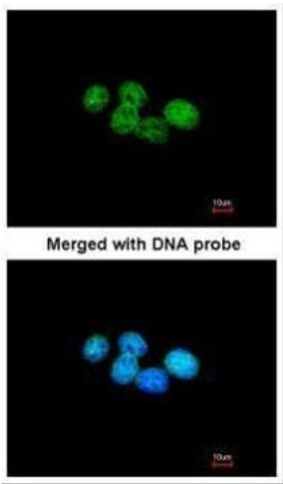
Alternative Name:	ERCC8 ( <a href="#">ERCC8 Products</a> )
Background:	<p>This gene encodes a WD repeat protein, which interacts with Cockayne syndrome type B (CSB) protein and with p44 protein, a subunit of the RNA polymerase II transcription factor IIH. Mutations in this gene have been identified in patients with hereditary disease Cockayne syndrome (CS). CS cells are abnormally sensitive to ultraviolet radiation and are defective in the repair of transcriptionally active genes.</p> <p>Cellular Localization: Nucleus</p>
Molecular Weight:	44 kDa
Gene ID:	1161
Pathways:	<a href="#">DNA Damage Repair</a> , <a href="#">Positive Regulation of Response to DNA Damage Stimulus</a>

## Application Details

Application Notes:	<p>Suggested dilution Reference ICC/IF 1:100-1:1000* Western blot 1:500-1:3000* Functional Assay Assay-dependent dilution Not tested in other applications. *Optimal dilutions/concentrations should be determined by the researcher.Suggested dilutionReferenceICC/IF1:100-1:1000* Western blot1:500-1:3000* Functional AssayAssay-dependent dilution</p>
Comment:	Positive Control: 293T , A431 , Neuro2A , GL261 , C8D30 , NIH-3T3, Raw264.7 , C2C12
Restrictions:	For Research Use only

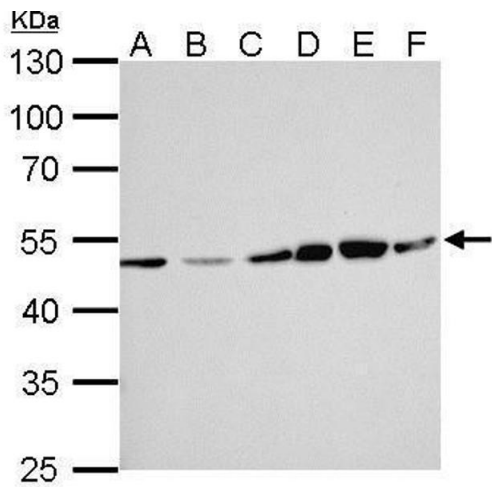
## Handling

Format:	Liquid
Concentration:	1 mg/mL
Buffer:	1XPBS, 20 % Glycerol ( pH 7). 0.01 % Thimerosal was added as a preservative.
Preservative:	Thimerosal (Merthiolate)
Precaution of Use:	This product contains Thimerosal (Merthiolate): a POISONOUS AND HAZARDOUS SUBSTANCE which should be handled by trained staff only.
Storage:	-20 °C
Storage Comment:	Keep as concentrated solution. Aliquot and store at -20°C or below. Avoid multiple freeze-thaw cycles.



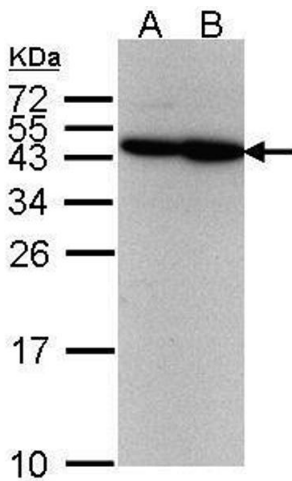
**Immunofluorescence**

**Image 1.** ICC/IF Image Immunofluorescence analysis of paraformaldehyde-fixed A431, using ERCC8(CSA), antibody at 1:200 dilution.



**Western Blotting**

**Image 2.** WB Image ERCC8 antibody [N2C2], Internal detects ERCC8 protein by Western blot analysis. A. 30 µg Neuro2A whole cell lysate/extract B. 30 µg GL261 whole cell lysate/extract C. 30 µg C8D30 whole cell lysate/extract D. 30 µg NIH-3T3 whole cell lysate/extract E. 30 µg Raw264.7 whole cell lysate/extract F. 30 µg C2C12 whole cell lysate/extract 10 % SDS-PAGE ERCC8 antibody [N2C2], Internal , dilution: 1:1000



**Western Blotting**

**Image 3.** WB Image Sample(30 µg of whole cell lysate) A:293T B:A431, 12% SDS PAGE antibody diluted at 1:500