

Datasheet for ABIN2857083  
**anti-FANCG antibody (Center)**[Go to Product page](#)

## 3 Images

## Overview

Quantity:	100 µL
Target:	FANCG
Binding Specificity:	Center
Reactivity:	Human, Mouse
Host:	Rabbit
Clonality:	Polyclonal
Conjugate:	This FANCG antibody is un-conjugated
Application:	Western Blotting (WB), Immunofluorescence (IF), Immunocytochemistry (ICC)

## Product Details

Immunogen:	Recombinant protein encompassing a sequence within the center region of human FANCG. The exact sequence is proprietary.
Isotype:	IgG
Characteristics:	Rabbit Polyclonal antibody to FANCG (Fanconi anemia, complementation group G) FANCG antibody [N1N3]
Purification:	Purified by antigen-affinity chromatography.

## Target Details

Target:	FANCG
Alternative Name:	FANCG ( <a href="#">FANCG Products</a> )

## Target Details

**Background:** The Fanconi anemia complementation group (FANC) currently includes FANCA, FANCB, FANCC, FANCD1 (also called BRCA2), FANCD2, FANCE, FANCF, FANCG, FANCI, FANCI (also called BRIP1), FANCL, FANCM and FANCN (also called PALB2). The previously defined group FANCH is the same as FANCA. Fanconi anemia is a genetically heterogeneous recessive disorder characterized by cytogenetic instability, hypersensitivity to DNA crosslinking agents, increased chromosomal breakage, and defective DNA repair. The members of the Fanconi anemia complementation group do not share sequence similarity, they are related by their assembly into a common nuclear protein complex. This gene encodes the protein for complementation group G.

**Molecular Weight:** 69 kDa

**Gene ID:** 2189

**Pathways:** [DNA Damage Repair](#)

## Application Details

**Application Notes:** Suggested dilution Reference ICC/IF 1:100-1:1000\* Western blot 1:500-1:3000\* Not tested in other applications. \*Optimal dilutions/concentrations should be determined by the researcher. Suggested dilution Reference ICC/IF 1:100-1:1000\* Western blot 1:500-1:3000\*

**Comment:** Positive Control: H1299, NIH-3T3

**Restrictions:** For Research Use only

## Handling

**Format:** Liquid

**Concentration:** 1 mg/mL

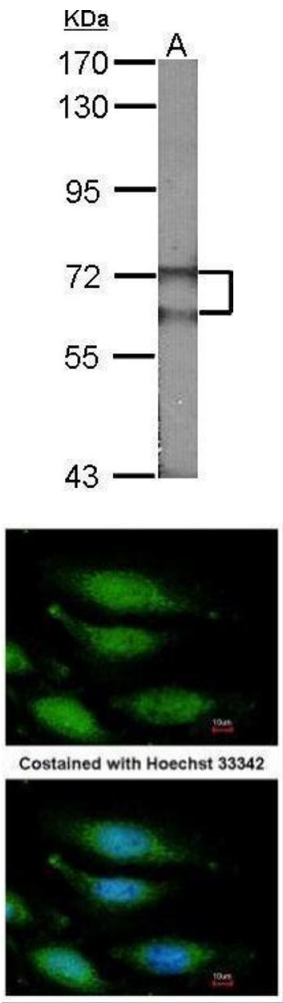
**Buffer:** 1XPBS, 40 % Glycerol ( pH 7). 0.01 % Thimerosal was added as a preservative.

**Preservative:** Thimerosal (Merthiolate)

**Precaution of Use:** This product contains Thimerosal (Merthiolate): a POISONOUS AND HAZARDOUS SUBSTANCE which should be handled by trained staff only.

**Storage:** -20 °C

**Storage Comment:** Keep as concentrated solution. Aliquot and store at -20°C or below. Avoid multiple freeze-thaw cycles.

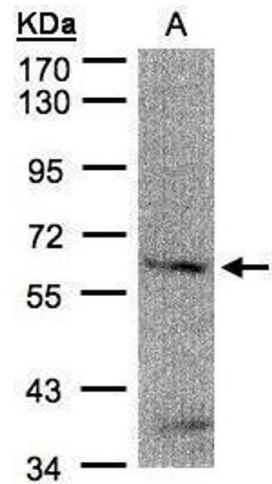


#### Western Blotting

**Image 1.** WB Image Sample (30 ug of whole cell lysate)  
A:NIH-3T3 7.5% SDS PAGE antibody diluted at 1:1000

#### Immunofluorescence

**Image 2.** ICC/IF Image Immunofluorescence analysis of paraformaldehyde-fixed HeLa, using FANCG, antibody at 1:200 dilution.



#### Western Blotting

**Image 3.** WB Image Sample(30 μg of whole cell lysate)  
A:H1299 7.5% SDS PAGE antibody diluted at 1:500