



[Go to Product page](#)

Datasheet for ABIN2859236

Tissue factor ELISA Kit

1 Image

2 Publications

Overview

Quantity:	96 tests
Target:	Tissue factor (F3)
Binding Specificity:	AA 29-251
Reactivity:	Mouse
Method Type:	Sandwich ELISA
Detection Range:	15.6-1000 pg/mL
Minimum Detection Limit:	15.6 pg/mL
Application:	ELISA

Product Details

Purpose:	Sandwich High Sensitivity ELISA kit for Quantitative Detection of Mouse Tissue factor
Brand:	PicoKine™
Sample Type:	Cell Culture Supernatant, Serum, Plasma (heparin), Plasma (EDTA), Plasma (citrate), Cell Lysate
Analytical Method:	Quantitative
Detection Method:	Colorimetric
Immunogen:	Expression system for standard: NSO Immunogen sequence: A29-E251
Specificity:	Expression system for standard: NSO Immunogen sequence: A29-E251
Cross-Reactivity (Details):	There is no detectable cross-reactivity with other relevant proteins.

Product Details

Sensitivity: <10pg/mL

Material not included: Microplate reader in standard size. Automated plate washer. Adjustable pipettes and pipette tips. Multichannel pipettes are recommended in the condition of large amount of samples in the detection. Clean tubes and Eppendorf tubes. Washing buffer (neutral PBS or TBS). Preparation of 0.01M TBS: Add 1.2g Tris, 8.5g NaCl

Target Details

Target: Tissue factor (F3)

Alternative Name: F3 ([F3 Products](#))

Background: Protein Function: Initiates blood coagulation by forming a complex with circulating factor VII or VIIa. The [TF:VIIa] complex activates factors IX or X by specific limited protolysis. TF plays a role in normal hemostasis by initiating the cell-surface assembly and propagation of the coagulation protease cascade.

Background: Tissue factor, also called platelet tissue factor, factor III, thrombokinase, or CD142 is a protein present in sub endothelial tissue and leukocytes necessary for the initiation of thrombin formation from the zymogene prothrombin. Tissue factor gene was mapped to 1pter-p21 by study of somatic cell hybrids with a species-specific sensitive chromogenic assay. This gene encodes coagulation factor III which is a cell surface glycoprotein. This factor enables cells to initiate the blood coagulation cascades, and it functions as the high-affinity receptor for the coagulation factor VII.

Synonyms: Tissue factor,TF,Coagulation factor III,CD142,F3,Cf-3, Cf3,

Full Gene Name: Tissue factor

Cellular Localisation: Membrane, Single-pass type I membrane protein.

Gene ID: 14066

UniProt: [P20352](#)

Pathways: [Positive Regulation of Endopeptidase Activity](#), [Smooth Muscle Cell Migration](#), [Platelet-derived growth Factor Receptor Signaling](#)

Application Details

Application Notes: Before using Kit, spin tubes and bring down all components to bottom of tube. Duplicate well assay was recommended for both standard and sample testing.

Plate: Pre-coated

Application Details

Protocol: mouse Tissue factor ELISA Kit was based on standard sandwich enzyme-linked immune-sorbent assay technology. A monoclonal antibody from rat specific for Tissue factor has been precoated onto 96-well plates. Standards(NSO, A29-E251) and test samples are added to the wells, a biotinylated detection polyclonal antibody from goat specific for Tissue factor is added subsequently and then followed by washing with PBS or TBS buffer. Avidin-Biotin-Peroxidase Complex was added and unbound conjugates were washed away with PBS or TBS buffer. HRP substrate TMB was used to visualize HRP enzymatic reaction. TMB was catalyzed by HRP to produce a blue color product that changed into yellow after adding acidic stop solution. The density of yellow is proportional to the mouse Tissue factor amount of sample captured in plate.

Assay Procedure: Aliquot 0.1 mL per well of the 1000pg/mL, 500pg/mL, 250pg/mL, 125pg/mL, 62.5pg/mL, 31.2pg/mL, 15.6pg/mL mouse Tissue factor standard solutions into the precoated 96-well plate. Add 0.1 mL of the sample diluent buffer into the control well (Zero well). Add 0.1 mL of each properly diluted sample of mouse cell culture supernates, serum, plasma(heparin, EDTA, citrate) or cell lysates to each empty well.. See "Sample Dilution Guideline" above for details. It is recommended that each mouse Tissue factor standard solution and each sample be measured in duplicate.

Assay Precision:

- Sample 1: n=16, Mean(pg/ml): 113, Standard deviation: 4.41, CV(%): 3.9
- Sample 2: n=16, Mean(pg/ml): 327, Standard deviation: 14.4, CV(%): 4.4
- Sample 3: n=16, Mean(pg/ml): 603, Standard deviation: 30.8, CV(%): 5.1,
- Sample 1: n=24, Mean(pg/ml): 120, Standard deviation: 5.64, CV(%): 4.7
- Sample 2: n=24, Mean(pg/ml): 315, Standard deviation: 18.3, CV(%): 5.8
- Sample 3: n=24, Mean(pg/ml): 592, Standard deviation: 37.3, CV(%): 6.3

Restrictions: For Research Use only

Handling

Handling Advice: Avoid multiple freeze-thaw cycles.

Storage: -20 °C, 4 °C

Storage Comment: Store at 4°C for 6 months, at -20°C for 12 months. Avoid multiple freeze-thaw cycles

Expiry Date: 12 months

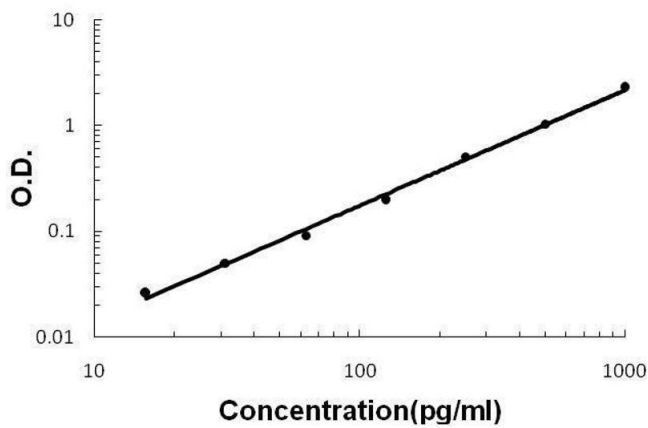
Publications

Product cited in: Wu, Ming, Zhang, Wu, Wu, Yao: "Edaravone rescues the lung by inhibiting lipid peroxidation and

pro-inflammatory cytokines in a rat model." in: **Chinese medical journal**, Vol. 127, Issue 5, pp. 968-70, (2014) ([PubMed](#)).

Chen, Wei, Zhuang, Qiao, Tang, Zhang, Wei, Fang, Chen, Du, Huang, Jiang, Hu, Hua: "Proteomic screening of anaerobically regulated promoters from Salmonella and its antitumor applications." in: **Molecular & cellular proteomics : MCP**, Vol. 10, Issue 6, pp. M111.009399, (2011) ([PubMed](#)).

Mouse Tissue factor ELISA Kit



ELISA

Image 1. Mouse Tissue Factor/F3 PicoKine ELISA Kit standard curve