



[Go to Product page](#)

Datasheet for ABIN2859253

Chordin ELISA Kit

1 Image

Overview

Quantity:	96 tests
Target:	Chordin (CHRD)
Binding Specificity:	AA 27-948
Reactivity:	Mouse
Method Type:	Sandwich ELISA
Detection Range:	62.5-4000 pg/mL
Minimum Detection Limit:	62.5 pg/mL
Application:	ELISA

Product Details

Purpose:	Sandwich High Sensitivity ELISA kit for Quantitative Detection of Mouse Chordin
Brand:	PicoKine™
Sample Type:	Cell Culture Supernatant, Serum, Plasma (heparin), Plasma (EDTA)
Analytical Method:	Quantitative
Detection Method:	Colorimetric
Immunogen:	Expression system for standard: NSO Immunogen sequence: T27-S948
Specificity:	NSO, T27-S948
Cross-Reactivity (Details):	There is no detectable cross-reactivity with other relevant proteins.
Sensitivity:	<10pg/mL

Product Details

Material not included: Microplate reader in standard size. Automated plate washer. Adjustable pipettes and pipette tips. Multichannel pipettes are recommended in the condition of large amount of samples in the detection. Clean tubes and Eppendorf tubes. Washing buffer (neutral PBS or TBS). Preparation of 0.01M TBS: Add 1.2g Tris, 8.5g NaCl

Target Details

Target: Chordin (CHRD)

Alternative Name: CHRD ([CHRD Products](#))

Background: Protein Function: Dorsalizing factor. Key developmental protein that dorsalizes early vertebrate embryonic tissues by binding to ventralizing TGF-beta family bone morphogenetic proteins (BMPs) and sequestering them in latent complexes.

Background: Chordin is a key developmental protein that dorsalizes early vertebrate embryonic tissues by binding to ventralizing TGF-beta-like bone morphogenetic proteins (BMPs) and sequestering them in latent complexes. In mice, Chordin is expressed in the node but not in the anterior visceral endoderm. It has been found to be required for forebrain development. In developing mice that are deficient in both chordin and noggin, the head is nearly absent. This is significant because when only noggin is deficient there are mild defects but the head still forms. Chordin is also involved in avian gastrulation. It is expressed in the anterior cells of Koller's sickle, which form the anterior cells of the primitive streak, a key structure through which gastrulation occurs.

Synonyms: Chordin,Chrd,

Full Gene Name: Chordin

Cellular Localisation: Secreted.

Gene ID: 12667

UniProt: [Q9Z0E2](#)

Application Details

Application Notes: Before using Kit, spin tubes and bring down all components to bottom of tube. Duplicate well assay was recommended for both standard and sample testing.

Plate: Pre-coated

Protocol: mouse Chordin ELISA Kit was based on standard sandwich enzyme-linked immune-sorbent assay technology. A monoclonal antibody from rat specific for Chordin has been precoated onto 96-well plates. Standards (NS0, T27-S948) and test samples are added to the wells, a

Application Details

biotinylated detection polyclonal antibody from goat specific for Chordin is added subsequently and then followed by washing with PBS or TBS buffer. Avidin-Biotin-Peroxidase Complex was added and unbound conjugates were washed away with PBS or TBS buffer. HRP substrate TMB was used to visualize HRP enzymatic reaction. TMB was catalyzed by HRP to produce a blue color product that changed into yellow after adding acidic stop solution. The density of yellow is proportional to the mouse Chordin amount of sample captured in plate.

Assay Procedure: Aliquot 0.1 mL per well of the 4000pg/mL, 2000pg/mL, 1000pg/mL, 500pg/mL, 250pg/mL, 125pg/mL, 62.5pg/mL mouse Chordin standard solutions into the precoated 96-well plate. Add 0.1 mL of the sample diluent buffer into the control well (Zero well). Add 0.1 mL of each properly diluted sample of mouse cell culture supernates, serum or plasma(heparin, EDTA) to each empty well. See "Sample Dilution Guideline" above for details. We recommend that each mouse Chordin standard solution and each sample is measured in duplicate.

Assay Precision:

- Sample 1: n=16, Mean(pg/ml): 98, Standard deviation: 5.19, CV(%): 5.3
- Sample 2: n=16, Mean(pg/ml): 319, Standard deviation: 18.82, CV(%): 5.9
- Sample 3: n=16, Mean(pg/ml): 1248, Standard deviation: 82.36, CV(%): 6.6,
- Sample 1: n=24, Mean(pg/ml): 75, Standard deviation: 4.35, CV(%): 5.8
- Sample 2: n=24, Mean(pg/ml): 402, Standard deviation: 28.94, CV(%): 7.2
- Sample 3: n=24, Mean(pg/ml): 1866, Standard deviation: 136.21, CV(%): 7.3

Restrictions: For Research Use only

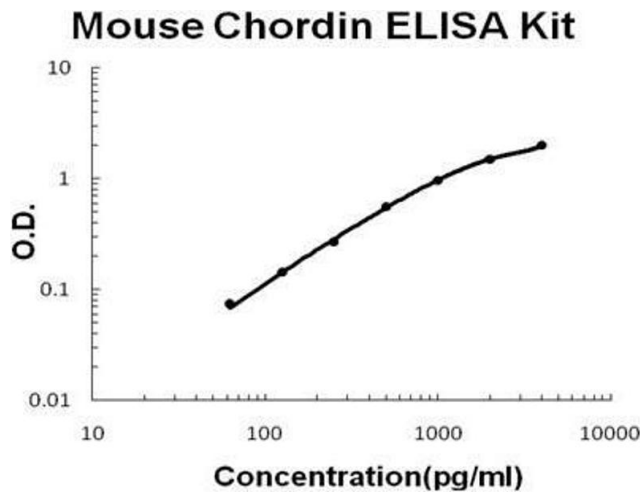
Handling

Handling Advice: Avoid multiple freeze-thaw cycles.

Storage: -20 °C, 4 °C

Storage Comment: Store at 4°C for 6 months, at -20°C for 12 months. Avoid multiple freeze-thaw cycles

Expiry Date: 12 months



ELISA

Image 1. Mouse Chordin PicoKine ELISA Kit standard curve