

## Datasheet for ABIN2859296 IL17 Receptor B ELISA Kit

[Go to Product page](#)

### 1 Image

#### Overview

Quantity:	96 tests
Target:	IL17 Receptor B (IL17RB)
Binding Specificity:	AA 18-286
Reactivity:	Human
Method Type:	Sandwich ELISA
Detection Range:	156-10000 pg/mL
Minimum Detection Limit:	156 pg/mL
Application:	ELISA

#### Product Details

Purpose:	Sandwich High Sensitivity ELISA kit for Quantitative Detection of Human IL-17RB
Brand:	PicoKine™
Sample Type:	Cell Culture Supernatant, Serum, Plasma (heparin), Plasma (EDTA)
Analytical Method:	Quantitative
Detection Method:	Colorimetric
Immunogen:	Expression system for standard: NSO Immunogen sequence: R18-K286
Specificity:	Expression system for standard: NSO Immunogen sequence: R18-K286
Cross-Reactivity (Details):	There is no detectable cross-reactivity with other relevant proteins.

## Product Details

Sensitivity: <10pg/mL

Material not included: Microplate reader in standard size. Automated plate washer. Adjustable pipettes and pipette tips. Multichannel pipettes are recommended in the condition of large amount of samples in the detection. Clean tubes and Eppendorf tubes. Washing buffer (neutral PBS or TBS). Preparation of 0.01M TBS: Add 1.2g Tris, 8.5g NaCl

## Target Details

Target: IL17 Receptor B (IL17RB)

Alternative Name: IL17RB ([IL17RB Products](#))

Background: Protein Function: Receptor for the proinflammatory cytokines IL17B and IL17E. May play a role in controlling the growth and/or differentiation of hematopoietic cells. .

Background: IL17RB, also known as CRL4, is a protein that in humans is encoded by the IL17RB gene. It is located on 3p21.1. IL17RB is produced by activated T cells exhibiting proinflammatory activities. The protein encoded by this gene is a cytokine receptor. This receptor specifically binds to IL17B and IL17E (IL25), but does not bind to IL17 (A) or IL17C. This receptor has been shown to mediate the activation of NF-kappaB and the production of IL8 induced by IL17E. And it may play a role in controlling the growth and/or differentiation of hematopoietic cells.

Synonyms: Interleukin-17 receptor B,IL-17 receptor B,IL-17RB,Cytokine receptor-like 4,IL-17 receptor homolog 1,IL-17Rh1,IL17Rh1,Interleukin-17B receptor,IL-17B receptor,IL17RB,CRL4, EVI27, IL17BR,UNQ2501/PRO19612,

Full Gene Name: Interleukin-17 receptor B

Cellular Localisation: Isoform 1: Cell membrane, Single-pass type I membrane protein.

Gene ID: 55540

UniProt: [Q9NRM6](#)

## Application Details

Application Notes: Before using Kit, spin tubes and bring down all components to bottom of tube. Duplicate well assay was recommended for both standard and sample testing.

Comment: Sequence similarities: Contains 1 SEFIR domain.

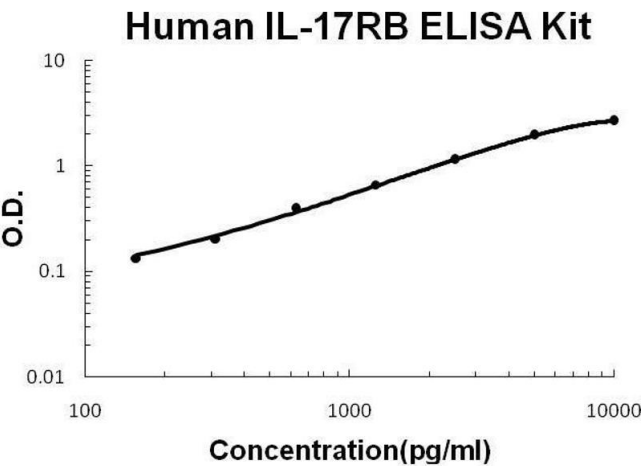
Tissue Specificity: Expressed in several endocrine tissues, mostly in fetal and adult liver, kidney, pancreas, testis, colon, brain and small intestine, not detected in peripheral blood leukocytes, lymphoid organs, and most cell lines.

## Application Details

Plate:	Pre-coated
Protocol:	human IL-17RB ELISA Kit was based on standard sandwich enzyme-linked immune-sorbent assay technology. A monoclonal antibody from mouse specific for IL-17RB has been precoated onto 96-well plates. Standards(NSO, R18-K286) and test samples are added to the wells, a biotinylated detection polyclonal antibody from goat specific for IL-17RB is added subsequently and then followed by washing with PBS or TBS buffer. Avidin-Biotin-Peroxidase Complex was added and unbound conjugates were washed away with PBS or TBS buffer. HRP substrate TMB was used to visualize HRP enzymatic reaction. TMB was catalyzed by HRP to produce a blue color product that changed into yellow after adding acidic stop solution. The density of yellow is proportional to the human IL-17RB amount of sample captured in plate.
Assay Procedure:	Aliquot 0.1 mL per well of the 10000pg/mL, 5000pg/mL, 2500pg/mL, 1250pg/mL, 625pg/mL, 312pg/mL, 156pg/mL human IL-17RB standard solutions into the precoated 96-well plate. Add 0.1 mL of the sample diluent buffer into the control well (Zero well). Add 0.1 mL of each properly diluted sample of human cell culture supernates, serum or plasma(heparin, EDTA) to each empty well. See "Sample Dilution Guideline" above for details. It is recommended that each human IL-17RB standard solution and each sample be measured in duplicate.
Assay Precision:	<ul style="list-style-type: none"><li>• Sample 1: n=16, Mean(ng/ml): 1.43, Standard deviation: 0.053, CV(%): 3.7</li><li>• Sample 2: n=16, Mean(ng/ml): 3.04, Standard deviation: 0.137, CV(%): 4.5</li><li>• Sample 3: n=16, Mean(ng/ml): 6.12, Standard deviation: 0.324, CV(%): 5.3,</li><li>• Sample 1: n=24, Mean(ng/ml): 1.86, Standard deviation: 0.106, CV(%): 5.7</li><li>• Sample 2: n=24, Mean(ng/ml): 3.43, Standard deviation: 0.233, CV(%): 6.8</li><li>• Sample 3: n=24, Mean(ng/ml): 6.51, Standard deviation: 0.469, CV(%): 7.2</li></ul>
Restrictions:	For Research Use only

## Handling

Handling Advice:	Avoid multiple freeze-thaw cycles.
Storage:	-20 °C, 4 °C
Storage Comment:	Store at 4°C for 6 months, at -20°C for 12 months. Avoid multiple freeze-thaw cycles
Expiry Date:	12 months



**ELISA**

**Image 1.** Human IL-17RB PicoKine ELISA Kit standard curve