

Datasheet for ABIN286207

**Goat anti-Rabbit IgG (Whole Molecule) Antibody**[Go to Product page](#)**1** Image

## Overview

Quantity:	1 mg
Target:	IgG
Binding Specificity:	Whole Molecule
Reactivity:	Rabbit
Host:	Goat
Application:	ELISA, Immunohistochemistry (IHC), Western Blotting (WB)

## Product Details

Immunogen:	Goat anti-rabbit IgG (H+L) was raised in goat using rabbit IgG whole molecule as the immunogen.
Characteristics:	Goat anti Rabbit IgG (H + L) secondary antibody Alternative Names: Goat anti Rabbit Immunoglobulin G (H + L) secondary antibody
Purification:	Purified

## Target Details

Target:	IgG
Abstract:	<a href="#">IgG Products</a>
Target Type:	Antibody

## Application Details

Application Notes:	ELISA: 1:25,000-1:100,000, IHC: 1:500-1:2,000, WB: 1:2.5000-1:10,000
--------------------	--

## Application Details

Restrictions: For Research Use only

## Handling

Format: Liquid

Concentration: Lot specific

Buffer: 0.02 M K<sub>2</sub>O<sub>4</sub>, pH 7.2, with 0.12 NaCl, and 0.01 % NaN<sub>3</sub>.

Preservative: Sodium azide

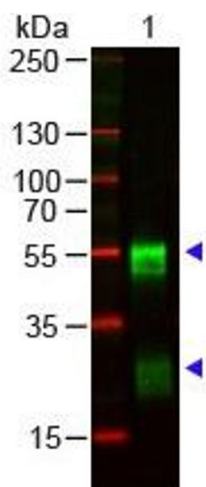
Precaution of Use: This product contains sodium azide: a POISONOUS AND HAZARDOUS SUBSTANCE which should be handled by trained staff only.

Handling Advice: Aliquot to Avoid repeated freezing and thawing.

Storage: 4 °C/-20 °C

Storage Comment: Store at 4 °C for short term storage. Aliquot and store at -20 °C for long term storage.

## Images



### Western Blotting

**Image 1.** Lane 1: Rabbit IgG. Load: 100 ng per lane. Primary antibody: Rabbit IgG (H + L) antibody pre-adsorbed at 1:1,000 for overnight at 4 deg C. Secondary antibody: DyLight 800 Donkey Anti-Goat IgG 1:20,000 for 30 min at RT. Block for 30 min at RT.