

Datasheet for ABIN286261

**Rabbit anti-Human IgA (Chain alpha), (Heavy Chain) Antibody**[Go to Product page](#)**1** Image

## Overview

Quantity:	2 mg
Target:	IgA
Binding Specificity:	Chain alpha, Heavy Chain
Reactivity:	Human
Host:	Rabbit
Application:	ELISA, Immunohistochemistry (IHC), Western Blotting (WB)

## Product Details

Immunogen:	Rabbit anti-human IgA was raised in rabbit using human IgA alpha heavy chain as the immunogen.
Characteristics:	Rabbit anti Human IgA secondary antibody Alternative Names: Rabbit anti Human Immunoglobulin A secondary antibody
Purification:	Purified

## Target Details

Target:	IgA
Abstract:	<a href="#">IgA Products</a>
Target Type:	Antibody

## Application Details

Application Notes:	ELISA: 1:5,000-1:20,000, IHC: 1:1,000-1:5,000, WB: 1:500-1:2,000
--------------------	--

## Application Details

Restrictions: For Research Use only

## Handling

Concentration: Lot specific

Buffer: 0.02 M K<sub>2</sub>O<sub>4</sub>, pH 7.2, with 0.12 NaCl, and 0.01 % NaN<sub>3</sub>.

Preservative: Sodium azide

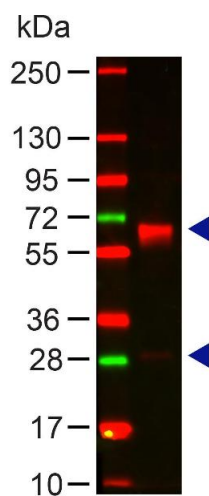
Precaution of Use: This product contains sodium azide: a POISONOUS AND HAZARDOUS SUBSTANCE which should be handled by trained staff only.

Handling Advice: Aliquot to Avoid repeated freezing and thawing.

Storage: 4 °C/-20 °C

Storage Comment: Store at 4 °C for short term storage. Aliquot and store at -20 °C for long term storage.

## Images



### Western Blotting

**Image 1.** Lane 1: Human IgA. Load: 100 ng per lane. Primary antibody: Human IgA (alpha chain) antibody at 1:1000 for 60 min at RT. Secondary antibody: DyLight 649 Goat anti-Rabbit at 1:20,000 for 30 min at RT. Block: 5% BLOTTO 30 min at RT.