



[Go to Product page](#)

Datasheet for ABIN2862700

## Rabbit anti-Human IgG4 (AA 222-327) Antibody

### 6 Images

#### Overview

Quantity:	100 µg
Target:	IgG4
Binding Specificity:	AA 222-327
Reactivity:	Human
Host:	Rabbit
Clonality:	Polyclonal
Application:	Western Blotting (WB), Immunohistochemistry (IHC), Immunoprecipitation (IP), Immunofluorescence (fixed cells) (IF/ICC)

#### Product Details

Immunogen:	IgG4 (Gln222-Lys327)
Purification:	Antigen-specific affinity chromatography followed by Protein A affinity chromatography

#### Target Details

Target:	IgG4
Alternative Name:	Immunoglobulin G4 ( <a href="#">IgG4 Products</a> )
Target Type:	Antibody
UniProt:	<a href="#">P01861</a>

## Application Details

---

Application Notes: Optimal working dilution should be determined by the investigator.

Restrictions: For Research Use only

## Handling

---

Format: Liquid

Concentration: 500 µg/mL

Buffer: PBS, pH 7.4, containing 0.02 % Sodium azide, 50 % glycerol.

Preservative: Sodium azide

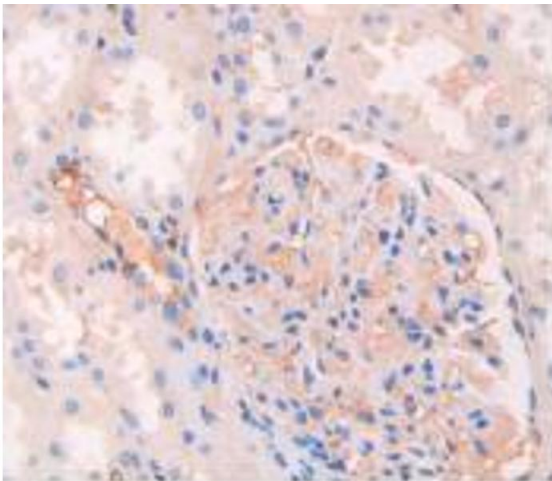
Precaution of Use: This product contains Sodium azide: a POISONOUS AND HAZARDOUS SUBSTANCE which should be handled by trained staff only.

Storage: 4 °C, -20 °C

Storage Comment: Store at 4 °C for frequent use. Aliquot and store at -20 °C for one year. Avoid repeated freeze/thaw cycles.

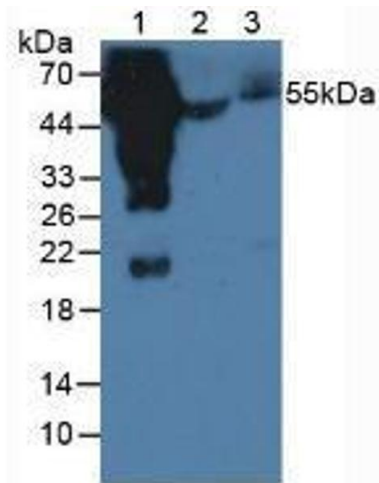
## Images

---



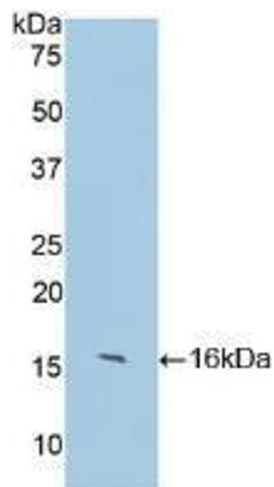
### Immunohistochemistry (Paraffin-embedded Sections)

**Image 1.** IHC-P analysis of Human Kidney Tissue, with DAB staining.



### Western Blotting

**Image 2.** Western blot analysis of (1) Human Serum, (2) Porcine Serum and (3) Mouse Serum.



### Western Blotting

**Image 3.** Western blot analysis of recombinant Human IgG4.

Please check the [product details page](#) for more images. Overall 6 images are available for ABIN2862700.