



[Go to Product page](#)

Datasheet for ABIN2866323

CEP57 (Human) Matched Antibody Pair

1 Image

Overview

Quantity:	1 set
Target:	CEP57
Reactivity:	Human
Host:	Mouse, Rabbit
Application:	ELISA

Product Details

Purpose:	This antibody pair set comes with matched antibody pair to detect and quantify protein level of human CEP57.
Cross-Reactivity:	Human
Characteristics:	This antibody pair set comes with matched antibody pair to detect and quantify protein level of human CEP57.
Components:	Antibody pair set content: 1. Capture antibody: mouse monoclonal anti-CEP57 (100 µg) 2. Detection antibody: rabbit purified polyclonal anti-CEP57 (50 µg) *Reagents are sufficient for at least 3-5 x 96 well plates using recommended protocols.

Target Details

Target:	CEP57
Alternative Name:	CEP57 (CEP57 Products)
Background:	Full Gene Name: centrosomal protein 57 kDa

Target Details

Synonyms: KIAA0092,PIG8,TSP57

Gene ID: 9702

Application Details

Application Notes: Optimal working dilution should be determined by the investigator.

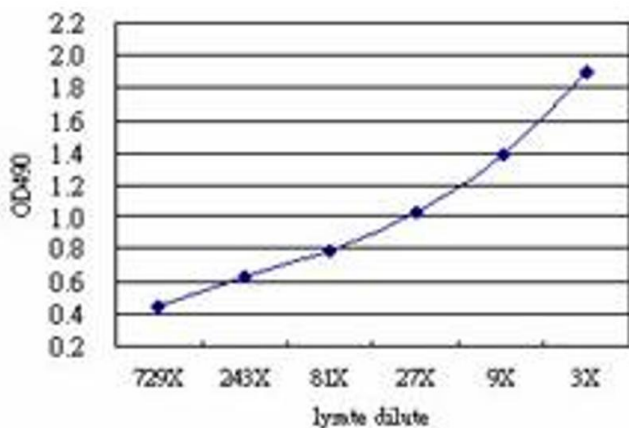
Restrictions: For Research Use only

Handling

Storage: -20 °C

Storage Comment: Store reagents of the antibody pair set at -20°C or lower. Please aliquot to avoid repeated freeze thaw cycle. Reagents should be returned to -20°C storage immediately after use.

Images



ELISA

Image 1. Sandwich ELISA detection sensitivity ranging from approximately 729x to 3x dilution of the CEP57 293T overexpression lysate (non-denatured).