



[Go to Product page](#)

Datasheet for ABIN2866325  
**anti-CD276 antibody (AA 28-238)**

2 Images

Overview

Quantity:	100 µg
Target:	CD276
Binding Specificity:	AA 28-238
Reactivity:	Human
Host:	Mouse
Clonality:	Monoclonal
Conjugate:	This CD276 antibody is un-conjugated
Application:	Western Blotting (WB), ELISA, Immunofluorescence (IF)

Product Details

Purpose:	Mouse monoclonal antibody raised against a partial recombinant CD276.
Immunogen:	CD276 (AAH62581.1, 28 a.a. ~ 238 a.a) partial recombinant protein.
Sequence:	ALEVQVPEDP VVALVGTDAT LCCSFSPPEPG FSLAQLNLIW QLTDTKQLVH SFAEGQDQGS AYANRTALFP DLLAQGNASL RLQRVRADE GSFTCFVSIR DFGSAAVSLQ VAAPYSKPSM TLEPNKDLRP GDTVITICSS YQGYPEAEVF WQDGQGVPLT GNVTTSQMAN EQGLFDVHSI LRVVLGANGT YSCLVRNPVL QQDAHSSVTI T
Clone:	7C10
Isotype:	IgG1
Cross-Reactivity:	Human
Characteristics:	Antibody Reactive Against Recombinant Protein.

## Target Details

Target:	CD276
Alternative Name:	CD276 ( <a href="#">CD276 Products</a> )
Background:	Full Gene Name: CD276 Molecule Synonyms: B7-H3,B7H3
Gene ID:	80381
Pathways:	<a href="#">Cancer Immune Checkpoints</a>

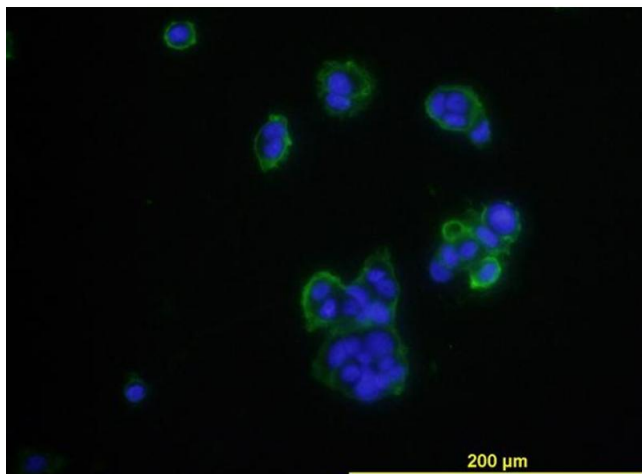
## Application Details

Application Notes:	Optimal working dilution should be determined by the investigator.
Restrictions:	For Research Use only

## Handling

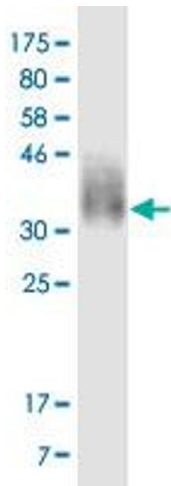
Buffer:	In 1x PBS, pH 7.4
Storage:	-20 °C
Storage Comment:	Store at -20°C or lower. Aliquot to avoid repeated freezing and thawing.

## Images



### Immunofluorescence

**Image 1.** Immunofluorescence of monoclonal antibody to CD276 on MCF-7 cell . [antibody concentration 10 ug/ml]



### Western Blotting

**Image 2.** Western Blot detection against Immunogen (26.29 kDa).