

Datasheet for ABIN2866347
RBM24 Protein (AA 1-191) (GST tag)



[Go to Product page](#)

1 Image

Overview

Quantity:	10 µg
Target:	RBM24
Protein Characteristics:	AA 1-191
Origin:	Human
Source:	Wheat germ
Protein Type:	Recombinant
Purification tag / Conjugate:	This RBM24 protein is labelled with GST tag.
Application:	Western Blotting (WB), ELISA, Affinity Purification (AP), Antibody Array (AA)

Product Details

Purpose:	RBM24 (Human) Recombinant Protein (P01)
Sequence:	MYVCLCVSVA KVTMADRAAA ERACKDPNPI IDGRKANVNL AYLGAKPRIM QPGFAFGVQQ LHPALIQRPF GIPAHYVYPQ AFVQPGVVIP HVQPTAAAAS TTPYIDYTGA AYAQYSAAAA AAAAAAAYDQ YPYAASPAAA GYVTAGGYGY AVQQPITAAA PGTAACAAAAA AAAAAAFGQY QPQLQTDRM Q
Characteristics:	Human RBM24 full-length ORF (BAB70914.1, 1 a.a. - 191 a.a.) recombinant protein with GST tag at N-terminal.
Purification:	in vitro wheat germ expression system

Target Details

Target:	RBM24
---------	-------

Target Details

Alternative Name:	RBM24 (RBM24 Products)
Background:	Synonyms: FLJ26355,FLJ30829,FLJ37697,RNPC6,dJ259A10.1 Gene Description: RNA binding motif protein 24 Gene Name: RBM24 GenBank: AK055391.1, BAB70914.1
Molecular Weight:	46 kDa (theoretical)
Gene ID:	221662
Pathways:	Regulation of Muscle Cell Differentiation, Skeletal Muscle Fiber Development

Application Details

Application Notes:	Optimal working dilution should be determined by the investigator.
Restrictions:	For Research Use only

Handling

Buffer:	50 mM Tris-HCl, 10 mM reduced Glutathione, pH =8.0 in the elution buffer.
Handling Advice:	Aliquot to avoid repeated freezing and thawing.
Storage:	-80 °C
Storage Comment:	Best use within three months from the date of receipt of this protein.

Images

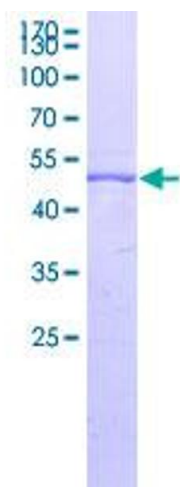


Image 1.