

Datasheet for ABIN2868250  
**BLUelf Prestained Protein Ladder**[Go to Product page](#)

## 1 Image

## Overview

Quantity:	500 µL
Detection Range:	3.5-245 kDa
Minimum Detection Limit:	3.5 kDa
Application:	SDS-PAGE (SDS), Western Blotting (WB)

## Product Details

Detection Method:	Colorimetric
-------------------	--------------

## Application Details

Application Notes:	Use 3 µL or 5 µL per loading for clear visualization during electrophoresis on 15-well or 10-well mini-gel, respectively. 1.5-2.5 µL per well for general Western transferring.  BLUelf Prestained Protein Ladder resolves 13 major bands in polyacrylamide gel with appropriate buffers and after Western blotting to nitrocellulose membrane.
Comment:	The BLUelf Prestained Protein Ladder is a combination of 13 pre-stained proteins with molecular weights from 5 to 245 kDa. The 13 recombinant proteins are covalently coupled with blue chromophore, while 1 green band at 25 kDa and a red band at 75 kDa serve as reference bands. The BLUelf Prestained Protein Ladder keeps track of the size and separation of proteins during SDS-polyacrylamide gel electrophoresis, approximating protein size and validating Western transfer efficiency on PVDF, nylon, or nitrocellulose membranes.
Reagent Preparation:	Quality Control:  Under suggested conditions, BLUelf Prestained Protein Ladder resolves 13 major bands in polyacrylamide gel with appropriate buffers and after Western blotting to nitrocellulose membrane.

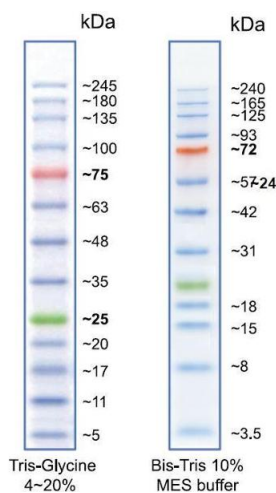
Application Details

Restrictions: For Research Use only

Handling

Format:	Liquid
Buffer:	Approximately 0.1~0.4 mg/mL of each protein in the buffer (20 mM ~3.5 ~5 Tris-phosphate, pH 7.5 at 25 °C), 2 % SDS, 10 mM Dithiothreitol, 3.6 M Bis-Tris 10 % Tris-Glycine Urea, and 15 % (v/v) Glycerol). MES buffer 4~20 %
Storage:	RT
Storage Comment:	Store at 25°C for 6 months, Store at -20°C for 24 months
Expiry Date:	24 months

Images



**Image 1.** Migration patterns of BLUelf Prestained Protein Ladder in different electrophoresis conditions