

Datasheet for ABIN2868254

BlueRAY Prestained Protein Ladder**1** Image[Go to Product page](#)

Overview

Quantity:	500 µL
Detection Range:	10-180 kDa
Minimum Detection Limit:	10 kDa
Application:	SDS-PAGE (SDS), Western Blotting (WB)

Product Details

Detection Method:	Colorimetric
-------------------	--------------

Application Details

Application Notes:	Use 3 µL or 5 µL per loading for clear visualization during electrophoresis on 15-well or 10-well mini-gel, respectively. 2-3 µL per well for general Western transferring. Apply more for thicker (>1.5mm) or larger gel. 5 µL of BlueRAY Prestained Protein Ladder resolves 10 bands in 4-20 % SDS-PAGE (Tris-glycine buffer) and after Western blotting to PVDF membrane.
--------------------	---

Comment:	The BlueRAY Prestained Protein Ladder is a three-color protein standard with 10 pre-stained proteins covering a wide range molecular weights for 10 to 180 kDa. Proteins are covalently coupled with a blue chromophore except for two reference bands (one green and one red band at 25 kDa and 75 kDa respectively) when separated on SDS-PAGE (Tris-glycine buffer). The BlueRAY Prestained Protein Ladder is designed for monitoring protein separated during SDS-polyacrylamide gel electrophoresis, verification of Western transfer efficiency on membranes (PVDF, nylon, or nitrocellulose) and for approximate sizing of proteins. The ladder is supplied in gel loading buffer and is ready to use. Do not heat, dilute, add reducing agent before loading.
----------	---

Restrictions:	For Research Use only
---------------	-----------------------

Handling

Format:	Liquid
Buffer:	Approximately 0.1~0.4 mg/mL of each protein in the buffer (20 mM Tris-phosphate, pH 7.5 at 25 °C), 2 % SDS, 1 mM Dithiothreitol, 3.6 M Urea, and 15 % (v/v) Glycerol). Tris-Glycine Bis-Tris 12 % Bis-Tris 10 % 4~20 % MOPS buffer MES buffer
Storage:	RT
Storage Comment:	Store at 25°C for 6 months, Store at -20°C for 24 months
Expiry Date:	24 months

Images

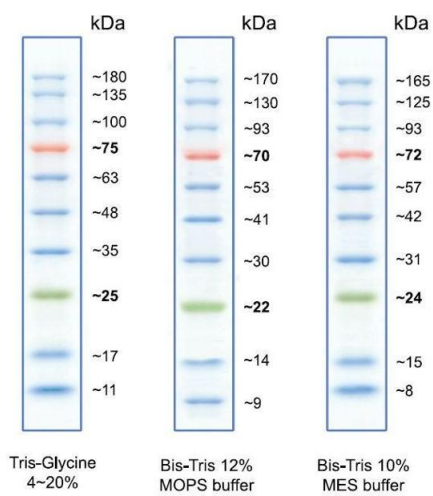


Image 1. Migration patterns of BlueRAY Prestained Protein Ladder in different electrophoresis conditions