



[Go to Product page](#)

Datasheet for ABIN2868518

BLUltra Prestained Protein Ladder

2 Images

Overview

Quantity:	500 µL
Detection Range:	6.5-270 kDa
Minimum Detection Limit:	6.5 kDa
Application:	SDS-PAGE (SDS), Western Blotting (WB)

Product Details

Purpose:	The BLUltra Prestained Protein Ladder is a three-color protein standard with 10 pre-stained proteins covering a wide range of molecular weights from 6.5 to 270 kDa.
Detection Method:	Colorimetric
Characteristics:	Proteins are covalently coupled with a blue chromophore except for three reference bands (two orange bands at 30 kDa and 270 kDa and one green band at 52 kDa) when separated on SDS-PAGE (Tris-glycine buffer). The BLUltra Prestained Protein Ladder is designed for monitoring protein separation during SDS-polyacrylamide gel electrophoresis and verifying Western transfer efficiency on membranes (PVDF, nylon, or nitrocellulose) and for approximating the size of proteins. The ladder is supplied in the gel loading buffer and is ready to use.

Application Details

Application Notes:	- 3 µl or 5 µl per loading for clear visualization during electrophoresis on 15-well or 10-well mini-gel, respectively. - 2.5 µl per well for general Western transferring.
Reagent Preparation:	Quality Control: Under suggested conditions, BLUltra Prestained Protein Ladder resolves 10 major bands in 4-12 % Bis-Tris Gel(MES buffer) and after Western blotting to the nitrocellulose

Application Details

membrane.

Restrictions: For Research Use only

Handling

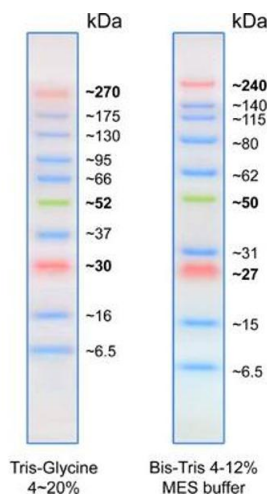
Format: Liquid

Buffer: Storage Buffer: 62.5 mM Tris-H3PO4 (pH 7.5 at 25 °C), 1 mM EDTA, 2 % SDS, 10 mM DTT, 1 mM Sodium azide, 33 % glycerol.

Storage: -20 °C

Storage Comment: Stable for up to 2 weeks at 25°C. Stable for up to 3 months at 4°C. For long term storage, store at -20°C.

Images



SDS-PAGE

Image 1.

SDS-PAGE

Image 2.

