

Datasheet for ABIN2868520

BlueAQUA Prestained Protein Ladder[Go to Product page](#)**1** Image

Overview

Quantity:	500 µL
Detection Range:	10-180 kDa
Minimum Detection Limit:	10 kDa
Application:	SDS-PAGE (SDS), Western Blotting (WB)

Product Details

Purpose:	The BlueAQUA Prestained Protein Ladder is a blue protein standard with 11 pre-stained proteins covering a wide range molecular weights from 10 to 180 kDa.
Detection Method:	Colorimetric
Characteristics:	Proteins are covalently coupled with a blue chromophore, and two reference bands (at 25 kDa and 72 kDa respectively) are enhanced in intensity when separated on SDS-PAGE (Tris-glycine buffer). The BlueAQUA Prestained Protein Ladder is designed for monitoring protein separation during SDS-polyacrylamide gel electrophoresis, verification of Western transfer efficiency on membranes (PVDF, nylon, or nitrocellulose) and for approximating the size of proteins. The ladder is supplied in gel loading buffer and is ready to use. Do not heat, dilute, add reducing agent before loading.

Application Details

Application Notes:	<ul style="list-style-type: none">- 3 µl or 5 µl per loading for clear visualization during electrophoresis on 15-well or 10-well mini-gel, respectively.- 1.5~2.5 µl per well for general Western transferring.- Apply more for thicker (> 1.5 mm) or larger gel.
--------------------	---

Application Details

Reagent Preparation: Quality Control: Under suggested conditions, BlueAQUA Prestained Protein Ladder resolves 11 major bands in 15 % SDS-PAGE (Tris-glycine buffer) and after Western blotting to nitrocellulose membrane.

Restrictions: For Research Use only

Handling

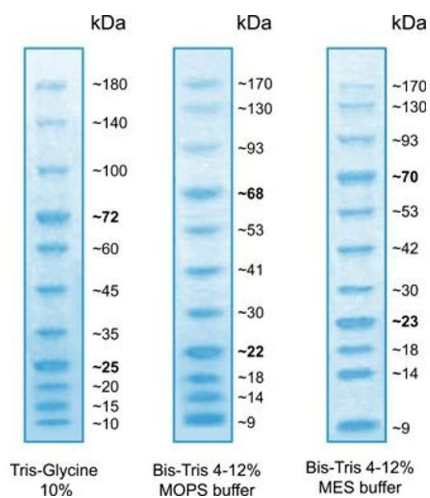
Format: Liquid

Buffer: Approximately 0.1~0.5 mg/mL of each protein in the buffer (20 mM Tris-phosphate, pH 7.5 at 25 °C), 2 % SDS, 0.2 mM Dithiothreitol, 3.6 M Urea, and 15 % (v/v) Glycerol).

Storage: -20 °C

Storage Comment: Stable for up to 2 weeks at 25°C Stable for up to 3 months at 4°C For long term storage, store at -20°C

Images



SDS-PAGE

Image 1.