

Datasheet for ABIN2868643  
**anti-HYOU1 antibody (PerCP)**[Go to Product page](#)

## 3 Images

## Overview

Quantity:	100 µg
Target:	HYOU1
Reactivity:	Human
Host:	Mouse
Clonality:	Monoclonal
Conjugate:	This HYOU1 antibody is conjugated to PerCP
Application:	Western Blotting (WB), Immunofluorescence (IF), Immunocytochemistry (ICC)

## Product Details

Immunogen:	Recombinant Full length GRP170 Protein
Clone:	6E3-2C3
Isotype:	IgG2b
Specificity:	Detects ~170 kDa.
Cross-Reactivity:	Human, Mouse, Rat
Purification:	Protein G Purified

## Target Details

Target:	HYOU1
Alternative Name:	GRP170 ( <a href="#">HYOU1 Products</a> )
Background:	GRP170, also known as ORP150, is the largest member of glucose-regulated Antibodys, and

## Target Details

acts as a human chaperone Antibody. It is thought to play an important role in Antibody folding and secretion in the ER. Suppression of the Antibody is associated with accelerated apoptosis, therefore having an important cryoprotective role in hypoxia-induced cellular perturbation. This cryoprotective role has led to an anti-tumor immune response, which will hopefully lead to therapeutic immunizations against cancers (1). GRP170 has also been shown to bind with dendritic cells and provide the danger signals to induce anti-tumor immune responses (2).

Gene ID: 10525

NCBI Accession: [NP\\_006389](#)

UniProt: [Q9Y4L1](#)

Pathways: [ER-Nucleus Signaling](#), [SARS-CoV-2 Protein Interactome](#)

## Application Details

Application Notes:

- WB (1:1000)
- ICC/IF (1:100)
- optimal dilutions for assays should be determined by the user.

Comment: 1 µg/ml of ABIN2868643 was sufficient for detection of GRP170 in 20 µg of HEK293 lysate by colorimetric immunoblot analysis using Goat anti-mouse IgG:HRP as the secondary antibody.

Restrictions: For Research Use only

## Handling

Format: Liquid

Concentration: 1 mg/mL

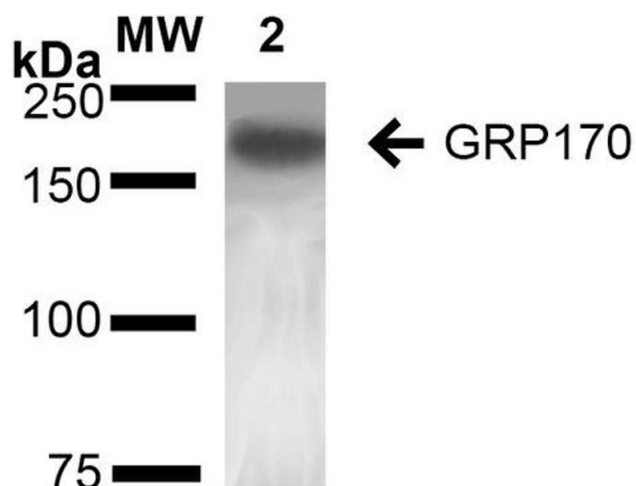
Buffer: PBS pH 7.4, 50 % glycerol, 0.1 % sodium azide, Storage buffer may change when conjugated

Preservative: Sodium azide

Precaution of Use: This product contains Sodium azide: a POISONOUS AND HAZARDOUS SUBSTANCE which should be handled by trained staff only.

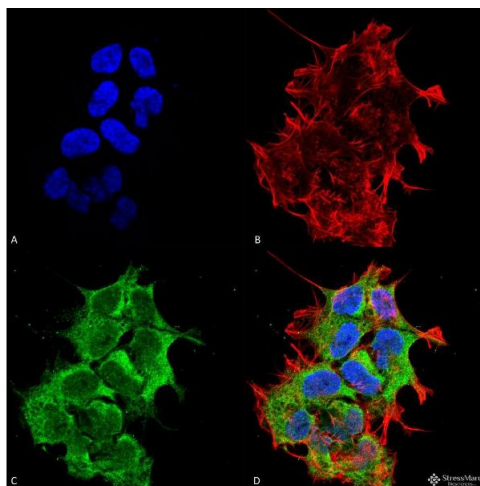
Storage: 4 °C

Storage Comment: Conjugated antibodies should be stored at 4°C



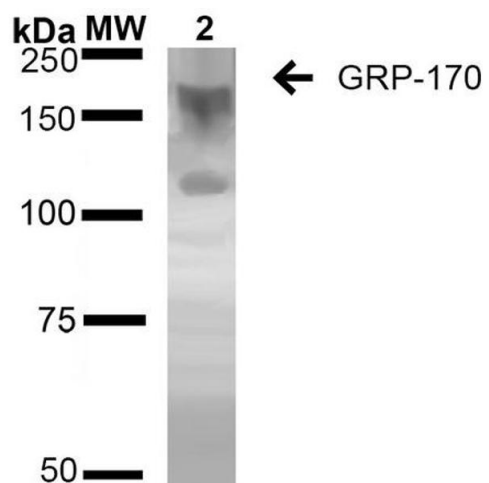
### Western Blotting

**Image 1.** Western Blot analysis of Rat Liver showing detection of ~170 kDa GRP170 protein using Mouse Anti-GRP170 Monoclonal Antibody, Clone 6E3-2C3 (ABIN2868643). Lane 1: Molecular Weight Ladder (MW). Lane 2: Rat Liver cell lysate. Load: 20 µg. Block: 2 % BSA and 2 % Skim Milk in 1X TBST. Primary Antibody: Mouse Anti-GRP170 Monoclonal Antibody (ABIN2868643) at 1:1000 for 16 hours at 4 °C. Secondary Antibody: Goat Anti-Mouse IgG: HRP at 1:100 for 60 min at RT. Color Development: ECL solution for 6 min in RT. Predicted/Observed Size: ~170 kDa.



### Immunofluorescence (fixed cells)

**Image 2.** Immunocytochemistry/Immunofluorescence analysis using Mouse Anti-GRP170 Monoclonal Antibody, Clone 6E3-2C3. Tissue: Neuroblastoma cell line (SK-N-BE). Species: Human. Fixation: 4% Formaldehyde for 15 min at RT. Primary Antibody: Mouse Anti-GRP170 Monoclonal Antibody at 1:100 for 60 min at RT. Secondary Antibody: Goat Anti-Mouse ATTO 488 at 1:100 for 60 min at RT. Counterstain: Phalloidin Texas Red F-Actin stain; DAPI (blue) nuclear stain at 1:1000; 1:5000 for 60 min RT, 5 min RT. Localization: Endoplasmic Reticulum, Endoplasmic Reticulum Lumen. Magnification: 60X. (A) DAPI (blue) nuclear stain (B) Phalloidin Texas Red F-Actin stain (C) GRP170 Antibody (D) Composite.



### Western Blotting

**Image 3.** Western Blot analysis of Human Embryonic kidney epithelial cell line (HEK293) lysates showing detection of ~170 kDa GRP170 protein using Mouse Anti-GRP170 Monoclonal Antibody, Clone 6E3-2C2 (ABIN2868643). Lane 1: Molecular Weight Ladder (MW). Lane 2: HEK-293 cell lysate. Load: 20 µg. Block: 2 % BSA and 2 % Skim Milk in 1X TBST. Primary Antibody: Mouse Anti-GRP170 Monoclonal Antibody (ABIN2868643) at 1:1000 for 16 hours at 4 °C. Secondary Antibody: Goat Anti-Mouse IgG: HRP at 1:100 for 60 min at RT. Color Development: ECL solution for 6 min in RT. Predicted/Observed Size: ~170 kDa. Other Band(s): 100 kDa.