

Datasheet for ABIN2868757
anti-Beclin 1 antibody (C-Term)



[Go to Product page](#)

3 Images

Overview

Quantity:	100 µg
Target:	Beclin 1 (BECN1)
Binding Specificity:	C-Term
Reactivity:	Human
Host:	Rabbit
Clonality:	Polyclonal
Application:	Western Blotting (WB), Immunofluorescence (IF), Immunocytochemistry (ICC)

Product Details

Immunogen:	Synthetic peptide from the C-terminus of human Beclin 1
Specificity:	Predicted molecular weight at ~51 kDa.
Cross-Reactivity:	Human, Rat
Purification:	Peptide Affinity Purified

Target Details

Target:	Beclin 1 (BECN1)
Alternative Name:	Beclin 1 (BECN1 Products)
Background:	Beclin 1 is the mammalian ortholog of the yeast autophagy -related gene Atg6. It regulates autophagy and has an important role in development, tumorigenesis and neurodegeneration (1). Beclin 1 is localized within cytoplasmic structures including the mitochondria, yet overexpression reveals some nuclear staining (2). Researchers have found that schizophreria

Target Details

is associated with low levels of Beclin-1 in the hippocampus (3). It may also protect against infection by a neurovirulent strain of Sindbis virus (4).

Gene ID: 8678

NCBI Accession: [NP_001300927](#)

UniProt: [Q14457](#)

Pathways: [Autophagy](#)

Application Details

Application Notes:

- WB (1:1000)
- ICC/IF (1:100)
- optimal dilutions for assays should be determined by the user.

Comment: A 1:1000 dilution of ABIN2868757 was sufficient for detection of Beclin1 on 293T lysates using Goat anti-rabbit IgG:HRP as the secondary antibody.

Restrictions: For Research Use only

Handling

Format: Liquid

Concentration: 1 mg/mL

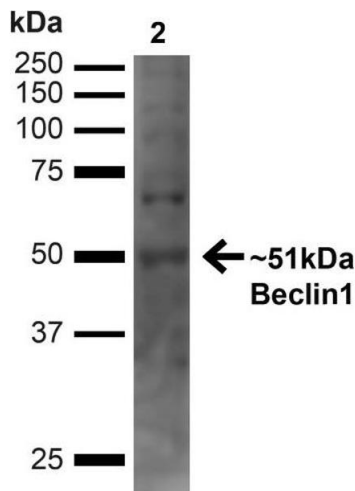
Buffer: PBS, 50 % glycerol, 0.09 % sodium azide, Storage buffer may change when conjugated

Preservative: Sodium azide

Precaution of Use: This product contains Sodium azide: a POISONOUS AND HAZARDOUS SUBSTANCE which should be handled by trained staff only.

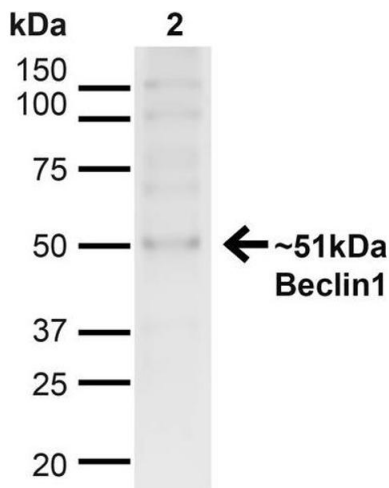
Storage: -20 °C

Storage Comment: -20°C



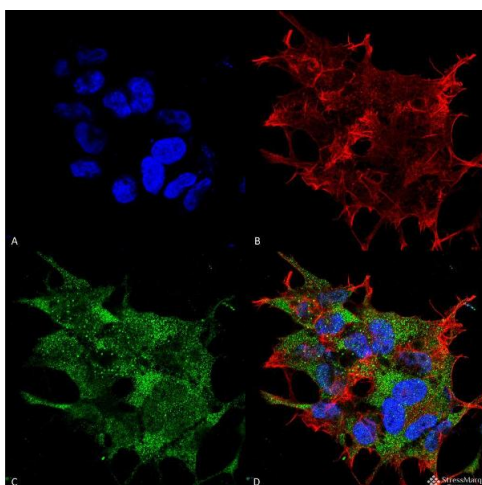
Western Blotting

Image 1. Western blot analysis of Human Embryonic kidney epithelial cell line (HEK293T) lysate showing detection of ~51 kDa Beclin 1 protein using Rabbit Anti-Beclin 1 Polyclonal Antibody (ABIN2868757). Lane 1: MW Ladder. Lane 2: Human 293T (20 µg). Load: 20 µg. Block: 5 % milk + TBST for 1 hour at RT. Primary Antibody: Rabbit Anti-Beclin 1 Polyclonal Antibody (ABIN2868757) at 1:1000 for 1 hour at RT. Secondary Antibody: Goat Anti-Rabbit: HRP at 1:2000 for 1 hour at RT. Color Development: TMB solution for 12 min at RT. Predicted/Observed Size: ~51 kDa.



Western Blotting

Image 2. Western blot analysis of Human HeLa cell lysates showing detection of ~51kDa Beclin 1 protein using Rabbit Anti-Beclin 1 Polyclonal Antibody . Lane 1: MW Ladder. Lane 2: Human HeLa (20 µg). Load: 20 µg. Block: 5% milk + TBST for 1 hour at RT. Primary Antibody: Rabbit Anti-Beclin 1 Polyclonal Antibody at 1:1000 for 1 hour at RT. Secondary Antibody: Goat Anti-Rabbit: HRP at 1:2000 for 1 hour at RT. Color Development: TMB solution for 12 min at RT. Predicted/Observed Size: ~51kDa.



Immunofluorescence (fixed cells)

Image 3. Immunocytochemistry/Immunofluorescence analysis using Rabbit Anti-Beclin 1 Polyclonal Antibody . Tissue: Neuroblastoma cell line (SK-N-BE). Species: Human. Fixation: 4% Formaldehyde for 15 min at RT. Primary Antibody: Rabbit Anti-Beclin 1 Polyclonal Antibody at 1:100 for 60 min at RT. Secondary Antibody: Goat Anti-Rabbit ATTO 488 at 1:100 for 60 min at RT. Counterstain: Phalloidin Texas Red F-Actin stain; DAPI (blue) nuclear stain at 1:1000, 1:5000 for 60min RT, 5min RT. Localization: Golgi apparatus, Dendrites and Cell bodies of cerebellar Purkinje cells. Magnification: 60X. (A) DAPI (blue) nuclear stain (B)

Phalloidin Texas Red F-Actin stain (C) Beclin 1 Antibody (D)
Composite.