

Datasheet for ABIN2870661

ITGAV/ITGB1 Protein (AA 31-992) (His tag)[Go to Product page](#)**2** Images

Overview

Quantity:	100 µg
Target:	ITGAV/ITGB1
Protein Characteristics:	AA 31-992
Origin:	Human
Source:	HEK-293 Cells
Protein Type:	Recombinant
Purification tag / Conjugate:	This ITGAV/ITGB1 protein is labelled with His tag.

Product Details

Sequence:	AA 31-992
Characteristics:	Human ITGAV & ITGB1 Heterodimer Protein, produced by co-expression of ITGAV and ITGB1, has a calculated MW of 113 kDa (ITGAV) and 83.7 kDa (ITGB1). Subunit ITGAV is fused with an acidic tail at the C-terminus and followed by a polyhistidine tag and subunit ITGB1 contains no tag but a basic tail at the C-terminus. The predicted N-terminus is Phe 31 (ITGAV) & Gln 21 (ITGB1). The reducing (R) protein migrates as 145 kDa (ITGAV) and 116 kDa (ITGB6) respectively due to glycosylation.
Purity:	>95 % as determined by SDS-PAGE.
Endotoxin Level:	Less than 1.0 EU per µg by the LAL method.

Target Details

Target:	ITGAV/ITGB1
---------	-------------

Target Details

Alternative Name: Integrin alpha V beta 1 ([ITGAV/ITGB1 Products](#))

Background: Integrin alpha-5/beta-1 is a receptor for fibrinogen. Integrin alpha-1/beta-1, alpha-2/beta-1, alpha-6/beta-1 and alpha-7/beta-1 are receptors for laminin. Integrin alpha-4/beta-1 is a receptor for VCAM1. It recognizes the sequence Q-I-D-S in VCAM1. Integrin alpha-9/beta-1 is a receptor for VCAM1, cytotactin and osteopontin. It recognizes the sequence A-E-I-D-G-I-E-L in cytotactin. Integrin alpha-V/beta-1 is also a receptor for vitronectin. Beta-1 integrins recognize the sequence R-G-D in a wide array of ligands. Isoform 2 interferes with isoform 1 resulting in a dominant negative effect on cell adhesion and migration (in vitro). When associated with alpha-7/beta-1 integrin, regulates cell adhesion and laminin matrix deposition.

Molecular Weight: 112.9 kDa (ITGAV) & 83.7 kDa (ITGB1)

Application Details

Restrictions: For Research Use only

Handling

Format: Lyophilized

Buffer: 50 mM Tris, 150 mM NaCl, pH 7.5

Handling Advice: Please avoid repeated freeze-thaw cycles.

Storage: -20 °C

Images

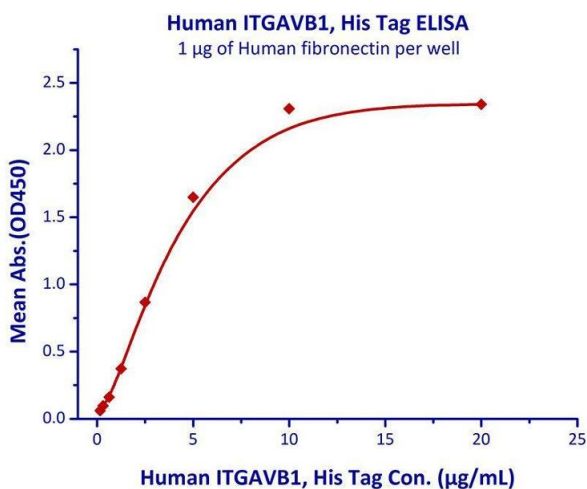
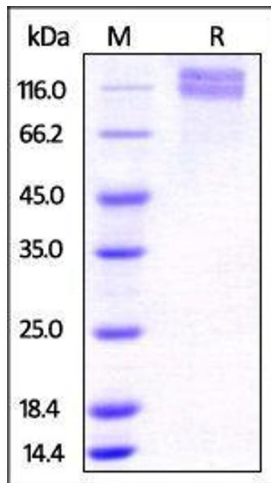


Image 1. Measured by its binding ability in a functional ELISA. Immobilized Human fibronectin at 10µg/mL (100 µL/well) can bind Human ITGAVB1, His Tag with a linear range of 0.16-5 µg/mL.



SDS-PAGE

Image 2. Human ITGAV & ITGB1 Heterodimer Protein on SDS-PAGE under reducing (R) condition. The gel was stained overnight with Coomassie Blue. The purity of the protein is greater than 95%.