

Datasheet for ABIN2870761

PDCD1LG2 Protein (AA 20-219) (His tag)**3** Images[Go to Product page](#)

Overview

Quantity:	100 µg
Target:	PDCD1LG2
Protein Characteristics:	AA 20-219
Origin:	Mouse
Source:	HEK-293 Cells
Protein Type:	Recombinant
Purification tag / Conjugate:	This PDCD1LG2 protein is labelled with His tag.

Product Details

Sequence:	AA 20-219
Characteristics:	This protein carries a polyhistidine tag at the C-terminus. The protein has a calculated MW of 24.4 kDa. The protein migrates as 37-45 kDa under reducing (R) condition (SDS-PAGE) due to glycosylation.
Purity:	>95 % as determined by SDS-PAGE.
Endotoxin Level:	Less than 1.0 EU per µg by the LAL method.

Target Details

Target:	PDCD1LG2
Alternative Name:	PD-L2 (PDCD1LG2 Products)
Background:	Programmed cell death 1 ligand 2 (PD-L2 or PDCD1 ligand 2) is also known as Butyrophilin B7-DC, CD antigen CD273, which belongs to the immunoglobulin superfamily or BTN/MOG family.

Target Details

The expression of PD-L2 is up-regulated by IFNG/IFN-gamma stimulation in monocytes and induced on dendritic cells grown from peripheral blood mononuclear cells with CSF2 and IL-4. PD-L2 Involved in the costimulatory signal, essential for T-cell proliferation and IFNG production in a PDCD1-independent manner. PD-L2 interaction with PDCD1 inhibits T-cell proliferation by blocking cell cycle progression and cytokine production.

Molecular Weight:	24.4 kDa
NCBI Accession:	NP_067371

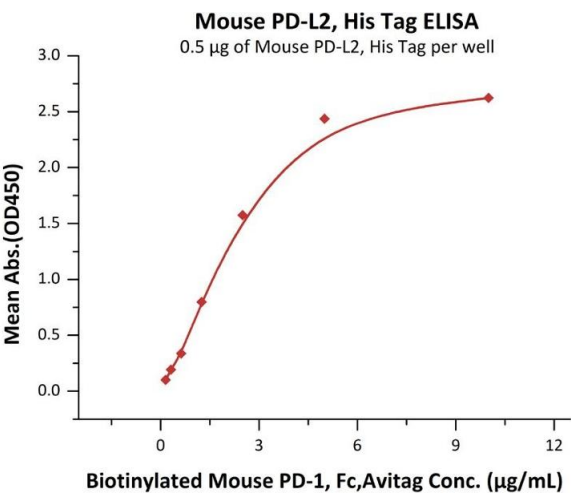
Application Details

Restrictions:	For Research Use only
---------------	-----------------------

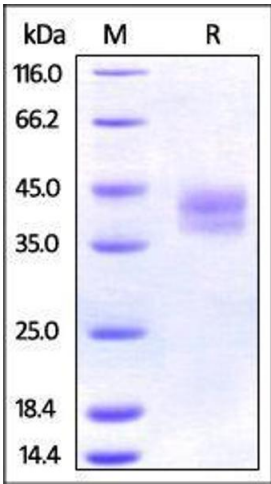
Handling

Format:	Lyophilized
Buffer:	PBS, pH 7.4
Handling Advice:	Please avoid repeated freeze-thaw cycles.
Storage:	-20 °C

Images

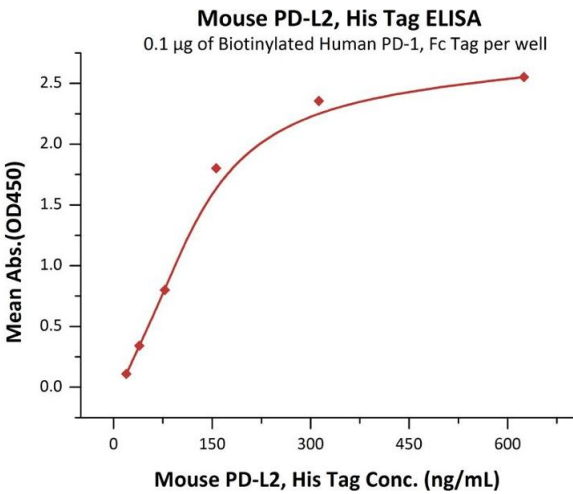


ELISA			
Image 1.	Immobilized	Mouse PD-L2, His Tag (ABIN2870760,ABIN2870761)	at 5 µg/mL (100 µL/well) can bind Biotinylated Mouse PD-1, Fc,Avitag (ABIN2870576,ABIN2870577) with a linear range of 0.156-2.5 µg/mL (Routinely tested).



SDS-PAGE

Image 2. Mouse PD-L2, His Tag on SDS-PAGE under reducing (R) condition. The gel was stained overnight with Coomassie Blue. The purity of the protein is greater than 95%.



ELISA

Image 3. Immobilized Biotinylated Human PD-1, Fc Tag (ABIN5674606,ABIN6253684) at 1 µg/mL (100 µL/well) on streptavidin precoated (0.2 µg/well) plate, can bind Mouse PD-L2, His Tag (ABIN2870760,ABIN2870761) with a linear range of 20-156 ng/mL (QC tested).